

“The Carriage Way”



International Carriage Clock Chapter #195 Founded 2013

The National Association of Watch and Clock Collectors

Volume 2023 No. 1



Alice in Wonderland's Carriage Clock

President's Report



Stan Boyatzis

Welcome to our first newsletter for 2023. I hope you all had an enjoyable and relaxing break and look forward to a happy and enjoyable 2023. The NAWCC 80th Anniversary National Convention in Lancaster is fast approaching. Chapter 195 will be involved in the anniversary celebrations at the NAWCC museum on the 13th of July. Leigh Extence from the UK will give a presentation on Carriage Clocks and this will be followed by a walk through the special Carriage Clock exhibit at the museum. Members of the Executive of Chapter 195 will be there to highlight the special features of carriage clocks on display.

Chapter 195 will also have a table display at the mart with chapter members manning the table. Please visit us when you are at the mart. Our face-to-face meeting has been confirmed for Saturday 15th. The Executive committee would like to see and meet as many of our members as possible, so if you are attending the National, please mark the date in your diaries. The meeting will be for approximately 90 minutes including a 40-45 minute lecture by Leigh Extence on 'Pierre and Alfred Drocourt. Carriage Clock Makers'. A special door prize of a French carriage will be given away to a lucky member attending the face-to-face meeting. If you have anything you wish to discuss about the Chapter, please email Doug Minty or myself and we will include this on the agenda. If you have a carriage clock you wish to show or require information about, please bring this along.

This month's feature article is by Leigh Extence on 'Alice in Wonderland's Carriage Clock'. In 2021 Leigh purchased a carriage clock owned by Alice Liddell, Lewis Carroll's Inspiration for Alice in Wonderland. Leigh discusses the history of this carriage clock made by Alfred Drocourt.

The second article is by Pete Ekins on 'A Brass Carriage Clock restoration Challenge'. An ornate miniature carriage clock with time, strike, repeat and date had lost its complete strike barrel and provided an interesting restoration challenge. Pete discusses how he carried out the restoration. Both Leigh and Pete welcome any questions from the members.

The executive continues to work hard to promote the chapter and I again encourage current members to spread the word about Chapter 195 and invite friends with an interest in carriage clocks to join. Remember, this is your newsletter so if you have any helpful hints or unusual carriage clocks you own or have seen, please share these with the members. If you have any queries about a carriage clock, please do not hesitate to contact Doug or myself. Details are at the back of the newsletter. Copies of previous newsletters, hints, and a question page are included on our website. There are also carriage clock articles from the Bulletin and carriage clock videos from the NAWCC library. You will need to be logged in as a NAWCC member to access these.

<https://new.nawcc.org/index.phpSEB195rosshogan@optusnet.com.aup/chapter-195-international-carriage-clock>

A link to the 1stdibs website is included. This is a useful website to research retail prices of carriage clocks and what is currently for sale. The website is updated weekly. We are happy to include other websites that may be of interest to the membership.

Members of the Executive Committee:

Stan Boyatzis: President (Aust.) Email: carriageclocks@optusnet.com.au

Ken Hogwood: Vice President (USA.) Email: kenhogwood@aol.com

Doug Minty: Secretary (Aust.) Email: dminty@optusnet.com.au

Chris Maher: Director (Aust.)

Tom Wotruba: Director (USA)

Leigh Extence: Director (UK)

Greg Cook: Director (USA)

Email: carriageclocks195@gmail.co

Alice in Wonderland's Carriage Clock

Leigh Extence (UK)



In 2021 I purchased a carriage clock owned by Alice Liddell, Lewis Carroll's Inspiration for Alice in Wonderland.



Alice in Wonderland Alice Hargreaves, née Liddell, with her granddaughter Mary-Jean Hargreaves from whom I bought the clock.

Made in Paris by the well-known clock maker Alfred Drocourt, the eight-day duration movement has a platform lever escapement and strikes on a gong with a push-button hour repeat to the top. The backplate is stamped with the DC trademark of Drocourt along with the serial number 17647. The pillared Anglaise case is made of silvered brass with panelled sides. What is so fascinating is that the engraved decoration to the dial, side panels and case depict riverside scenes of reeds, insects and flower heads all very reminiscent of the detail in the drawings by John Tenniel shown in the early copies of *Alice's Adventures in Wonderland* and *Alice Through the Looking Glass*. The riverbank scenes shown on the clock would have been similar to those that Alice and her sisters would see as they punted down the River Isis with Charles Dodgson in the summer of 1862 as he regaled them with stories of Alice's fanciful adventures. Stories that became the basis of his children's books when Dodgson was writing under the name Lewis Carroll. The clock is complete with its numbered Moroccan leather travelling box and numbered key.





The serial number on the clock movement 17647 dates it to 1879/80. This is of interest as correspondence sent to me from Alice's grand-daughter Mary-Jean St. Clair (née Hargreaves) and great-grand-daughter Vanessa Alice Tait state that the clock was probably given to Alice as a wedding present in September 1880 when she married the cricketer Reginald Hargreaves becoming Alice Hargreaves.

ARCOT
1085.

BROADWOOD HOUSE,
SUNNINGDALE.

I received the clock
on my father's death
as his only child.
He wanted it for Alice
as her only child.

M. Tait

24 May '22

Dear Leigh,

Here is my mother's
note. I am afraid it is
not the most legible, or
printed on the cleanest paper
(mother is nice!).

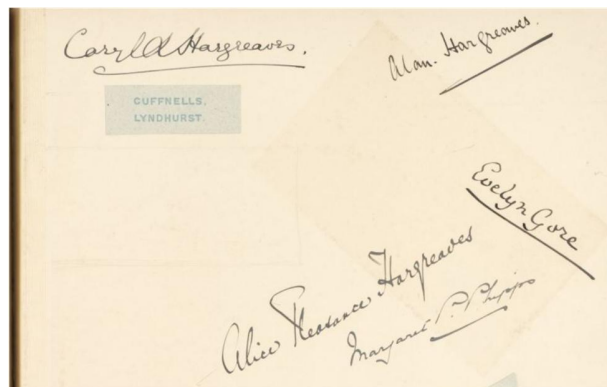
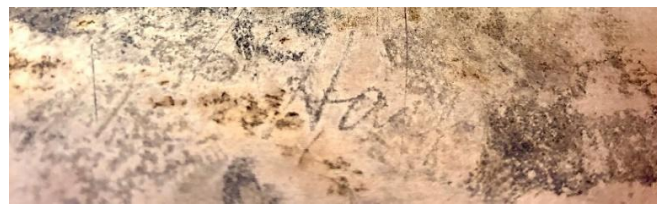
My mother thinks the
clock was probably a
wedding present to Alice,
but we don't know from
when.

Best,
Vanessa

On examining the clock, I found a faint signature to the underside which when looked at closely read *Mrs Hargreaves*.

Whilst researching the clock I purchased an album put together in the early 1900s by Ada Coralie Meade-Waldo, a member of a society family, which she used to illustrate with photographs, drawings and other pastings her visits to friends and family at their grand homes, mainly around the south-east of England but also other parts of the country. One page is devoted to a visit to the Hargreaves family home *Cuffnells* in Hampshire and is autographed by Alice. The signature is a perfect match to that seen on the underside of the clock proving that the clock is signed by Alice herself. There can't be a better attribution to ownership than this.

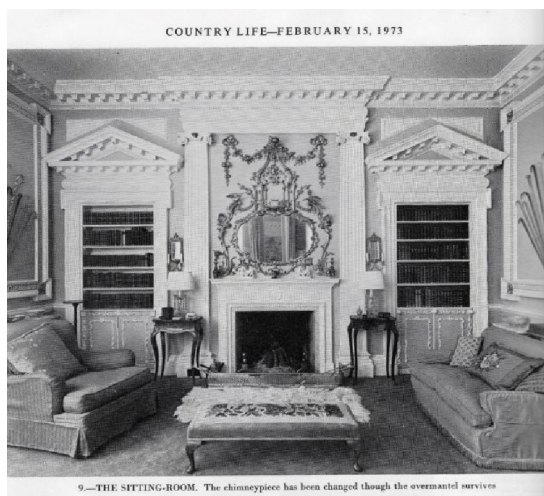
Also on the page from Ada's album is the signature of Alice's son Caryl Hargreaves who, as mentioned in the letter from Mary-Jean, owned the clock following the death of Alice in 1934. As such I have original signatures of all three members of the family who had possession of it.



The clock would have resided with Caryl at his home Broadwood House, Ascot as noted on the letter-heading to the letter sent to me by Mary-Jean.

Following the death of Caryl in November 1955 the clock passed on to his daughter, and Alice's granddaughter, Mary-Jean Alice Hargreaves, now Mrs St. Clair following her marriage in June of that year to Malcolm St. Clair. St. Clair had previously been honorary secretary to Sir Winston Churchill and was a future Member of Parliament for Bristol South East. They set up home at the St. Clair family country estate, Upton House, situated near Tetbury, Gloucestershire. In an email to me her daughter Vanessa states in summary that *My mother (Mary-Jean) has written a short note for you confirming that the clock belonged to Alice, and after that Caryl before being left to her... and after that was kept at Upton in its case.*

In researching Upton House I came across a copy of Country Life magazine dated 15th of February 1973 in which there is a five-page article on the house and its history. The clock case within which Mary-Jean stated the clock was kept at Upton is clearly shown in a photo of the sitting room seated on a table next to the fireplace.



Vanessa states in her letter that her mother believes the clock was given to Alice as a wedding present, but she is unsure by who.

Finding out who may have originally given Alice and Reginald Hargreaves the clock led me on to another path of research, one that would then give a name to every person whose hands it has passed through.

Alice Liddell's father Henry held the important post of Dean of Christ Church, Oxford, and therefore it seemed likely that the wedding would be noted in the newspapers of the day. A search through the Oxford newspapers, following a tip-off from Mark Davies of the Lewis Carroll Society, brought forth a wonderful description of the wedding itself which due to Henry Liddell's standing in the Church was held in Westminster Cathedral, home of Coronations, Royal weddings and state funerals.

URDAY, SEPTEMBER 18, 1880.

THE MARRIAGE OF MISS LIDDELL.		VOLUN
It is but seldom that a marriage is solemnised within the precincts of the ancient Abbey Church of Westminster, that grand mosoleum of England's greatest heroes, orators, poets, and statesmen. That honour, however, was accorded to the daughter of the Ven. the Dean of Christ Church on Wednesday last, and to add to it Dean Stanley himself performed the marriage ceremony. Apart altogether from the friendship which exists between the two deans, it was a graceful act on the part of the head of the Abbey to remember that Dr. Liddell was formerly Head Master of Westminster School, and that his connexion with the city was in itself a plea for the celebration of the ceremony in the grand old fane. Besides, the bride has in her veins the Ravensworth blood, her father being the nephew of the late earl. And, then, every one knows how Dean Stanley delights to honour those who have been at anytime associated with the Royal Family. It will be remembered that Dean Liddell was domestic chaplain to the late Prince Consort, and that he is at present extraordinary Chaplain to Her Majesty the Queen. There was, therefore, perfect fitness in the happy ceremony of Wednesday taking place where it did.	outing w invitation rendezvo ten o'clock at once p nately th arrival, a neverthel done amj for Witn Witney Brigade brigade skin, it h	
Miss Alice Pleasance Liddell, the bride, is the second daughter of the Dean, and is too well known to need a word of praise in these columns. The bridegroom is Reginald Gervis Hargreaves, eldest son of the late Anthony Hargreaves, Esq., of Cuffnells, Lyndhurst, Hampshire, Justice of the Peace for that county, and also a Deputy-Lieut. and J.P. for the county of Lancaster, by his wife, Anna Maria, second daughter of the late	THE R the Mari afternoon REGIST vising ba Hall on l CHENW M.P., wi Monday AGRIC matches : dinner w North, M Co-OP eration w A meetin and Mr. OBER- Ober-Am	MR MEYRICK, cigar cabinet Mr and Mrs Montifore, diamond and pearl spray of marguerites Miss Liddell's Byron's works, illustrated Mr T. L. Pearson, flask Mrs Penn, old finely-carved fan Mr and Mrs J. Penn, blotter and envelope case, silver mounted Mr Alfred Penn, handsome engraved travelling clock Mr H. Reeve, gold mounted travelling bag Countess of Rothesay and Hon. W. Leslie, ivory card case Lieutenant Colonel Reeve, old silver framed photograph Hon. Fitzroy Stewart, pair of Dresden china figures Lord Victor Seymour, strawberry and cream dish, blue china, silver mounted

And there at the end of the article is a list of the wedding gifts given to the couple including one Prince Leopold, son of Queen Victoria, who gave Alice a horseshoe brooch that she wore on the day.

Although five clocks were listed as presents, one stood out. A *Handsome engraved travelling clock* given by Alfred Penn. This is described in the list below another gift of a *Blotter and envelope case, silver mounted* given by Mr & Mrs J. Penn and *an old finely-carved fan* from Mrs. Penn. Research into the name Alfred Penn brought up a clear link with the cricketing career of Reginald Hargreaves.

In June 1875 Reginald made his first-class debut for Hampshire against Kent at the latter's ground in Catford where he came up against Frank Penn, *the famous Kent batsman* who had a *short but very brilliant career, ranking for several years among the finest batsmen of his day*. Frank had three brothers including John Penn, the Member of Parliament for neighbouring Lewisham from 1891

1903 and Alfred (Dick) Penn, another county cricketer for Kent who made his debut for the county in July 1875 against Sussex at Hove. Interestingly, both Frank and Reginald played alongside each other for the MCC over a number of years, the MCC being the Marylebone Cricket Club, the custodian and arbiter of laws relating to cricket around the world. The third brother, William Penn, also played for Kent and the MCC. Therefore, Reginald Hargreaves would have played cricket both against and with members of the Penn family on many occasions and would certainly have mixed in the same social circles as Alfred and John.

Their father John Penn FRS had been a prominent engineer and engineering inventor in Greenwich in the mid-1800s and supplied the Royal Navy with motorisation just as they were moving from sail to motor in their ships. He died in 1878 leaving a widow Ellen who is quite possibly the *Mrs. Penn* as also mentioned in the wedding list.

As such it can be assumed that it was indeed Alfred (Dick) Penn who presented Reginald & Alice Hargreaves with the *handsome engraved travelling clock*.

The unbroken line of the clock owners is therefore: Alfred Drocourt, Alfred Penn, Reginald & Alice Hargreaves (nee Liddell), Caryl Hargreaves, Mary-Jean Alice St. Clair (née Hargreaves), Leigh Extence.

The three family members who owned the Alice Clock



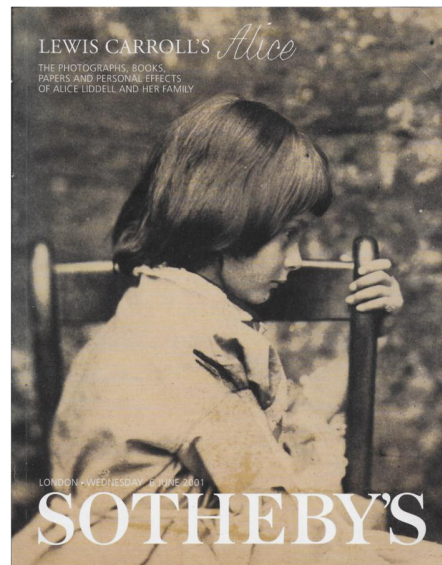
Alice Liddell (Alice in Wonderland) and her son Caryl Hargreaves with his daughter, and Alice's granddaughter, Mary-Jean Hargreaves (Mary-Jean St. Clair).



New York World Telegram November 16th 1934

On the 6th of June 2001 Sotheby's of London held a single-owner sale entitled *Lewis Carroll's Alice, The Photographs, Books, Papers and Personal Effects of Alice Liddell and her Family*. The majority of the items came from Alice's grand-daughter Mary-Jean St. Clair, but didn't include her clock which the family decided to keep.

The sale produced an astonishing final selling figure of over two million pounds (including auction commission) showing the enduring interest in the real Alice.



Copyright Leigh Extence 2023

leigh@extence.co

A BRASS CARRIAGE CLOCK RESTORATION CHALLENGE

Pete Ekens (Aust.)

An ornate miniature carriage clock with time, hour and half hour strike, repeat and date was received for restoration. It had lost its complete strike barrel and provided an interesting restoration challenge.

Described as a miniature carriage clock with an enameled and silvered brass dial, side panels, rear door and brass corner pillars.



The carriage clock has an Oriental theme featuring multi-colored birds and butterflies amid cherry blossoms. The silvered dial repeats the theme with an engraved Chapter ring and Roman numerals filled with royal blue for time and an engraved subsidiary dial Chapter ring filled with black for the date.



Engraved within the Chapter ring in old English lettering (and unfilled) is, “Carlo a’ Mathilde” and “Xmas 1886” with floral decoration.

The movement is planted within 43 x 28.3 mm brass plates (smaller than a matchbox) and the carriage clock sits flat on its base with no feet.

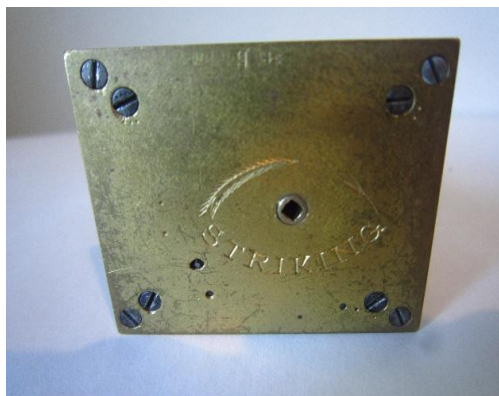


A strike train barrel and great wheel were fabricated to fit into the base and engage a transfer pinion to a bevel gear mounted on the back plate with the strike train. The module of the transfer pinion and the proportional ratio of diameters of the going barrel to the new strike barrel and tooth counts were used to determine the M 0.3 module of the new great wheel teeth – cut to 96 on a 30.0mm diameter rim.



As there are no feet to the clock, the strike train winding square required is female. The base is 10.3 mm tall overall. Inside the 1.4 mm base plate is a 0.7mm thickness ratchet wheel requiring a square on the barrel arbor. A barrel arbor was fabricated to theoretically proportional dimensions and to fit the existing pivot holes in the base and base plate without modification. A steel watch key 00 size, which fitted the existing clock key square, was used to provide the

female winding square for the arbor. This was fitted into the fabricated barrel arbor and pinned to prevent rotation during winding. The barrel arbor outer pivot was made to include a 0.3mm sleeve around the parted off watch key to fit the existing base plate pivot hole.



I would like to acknowledge the assistance of Doug Minty for his ideas and encouragement with this restoration.

**Carriage Clocks sold at the recent Schmitt Horan & Co
Clocks Watches and Antiques On Line Auction on
Saturday/Sunday 4th & 5th February.
This is reproduced from the Schmitt Horan & Co February 2022 Catalog**

**Lot 236: An early 20th century gorged Cased Grand Sonnerie carriage clock
by Charles Hour.**



Description:

Charles Hour, Paris, for Bigelow Kennard & Co., Boston, a good gorge cased carriage clock with grand sonnerie striking and alarm, brass case with moulded top and base, five bevelled glasses, and carrying handle, roman numeral white enamel dial with subsidiary alarm chapter, blued steel distaff style hands, three train movement with lever platform and cut bimetallic balance, sounding the hours and quarters on two gongs, and repeating the last hour and quarter on demand, the back plate marked "Ch. Hour", the base with strike/ silent lever.

Condition:

Case dirty, with tarnish and spotting, lacking gilding, rear glass replaced with plexiglass, and with cracks, the other glasses good, dial good, movement dirty, oily, running, striking, and repeating, quarters sometimes incorrect, needs service and adjustment, alarm is functional.

Dimensions: 4in x 7in x 3.5in **Circa:** 1900

Sale Price: \$800 **High Estimate:** \$700 **Low Estimate:** \$500

Lot 237: A Traveling Compendium with a Glazed Carrying case Signed Tiffany and Co.



Description:

Tiffany & Co., Geneva, a traveling compendium with glazed carrying case, the gilt, oval cases resting on a gilt trimmed white onyx base, one containing an 8 day lever timepiece with signed, roman numeral white enamel dial and engraved, gilt mask, the other with aneroid barometer and thermometer, the barometer with signed white enamel dial and engraved, gilt mask, the back with the thermometer mounted to a silvered plate, the top with pivoting ring handle, and contained in a red velvet lined, leather covered wooden case with bevelled glass front and carrying handle.

Condition:

Onyx base with repaired breaks and minor losses, gilt trim and base of clock case with localized verdigris, minor losses to gilding, time dial with hairlines at top, thermometer plate with darkening at the edge, movement with numbers finely scratched into back plate, running, travel case with minor losses to covering and black tape repair at upper left corner, case interior with wear and minor losses, carrying handle with cracks.

Dimensions: 7in x 6in x 3.25in **Circa:** 1900

Accessories: Key

Sale Price: \$650

High Estimate: \$600

Low Estimate: \$400

Lot 238: A French Petite Sonnerie Striking and Repeating Carriage Clock.



Description:

France, a petit sonnerie striking and repeating carriage clock, the brass Corniche case with bevelled glasses, roman numeral white enamel dial with blued steel hands and alarm chapter below 6:00, 8 day, brass three train movement with lever platform and cut bimetallic balance, striking ting tang quarters in passing, and repeating the last hour and quarter on demand, the inside of the front plate marked "G.H" within a circle.

Condition:

Case dirty and with tarnish and polish residue, lacking gilding, glasses good, dial good, hands mismatched, movement dirty, with tarnish and staining, running, striking and repeating correctly, alarm functional.

Dimensions: 3.75in x 7in x 3.25in

Circa: 1910

Sale Price: \$700 **High Estimate:** \$500 **Low Estimate:** \$300

Lot 239: A French Repeating Petite Sonnerie Carriage Clock.



Description:

France, a late 19th century repeating petit sonnerie carriage clock, brass Corniche case with five bevelled glasses, roman numeral white enamel dial with blued steel hands, and 8 days, two train movement with lever platform and cut bimetallic balance, sounding ting tang quarters in passing on two gongs, and repeating the last hour and quarter on demand, with leather covered travel case.

Condition:

Case tarnished and with polish residue, front glass with minor loss at upper right, rear glass with minor loss at lower left, dial with loss at upper left and cracks at upper right, mostly hidden by dial trim, one case screw missing, hands mismatched, movement dirty, running, striking and repeating, strikes grand sonnerie at first quarter, occasionally strikes or repeats incorrectly at other quarters, sometimes strikes quarters for an extended period of time, needs service and adjustment, travel case fair with wear and imperfections.

Dimensions: 3.75in x 6.75in x 3.25in **Circa:** 1890

Sale Price: \$500 **High Estimate:** \$350 **Low Estimate:** \$250

Lot 240: Two French Carriage clocks with Repeat.



Description:

2 (Two) French carriage clocks with 8 day lever platform escapement movements, striking the hours and half hour in passing and repeating the last hour on demand; the first for " Bigelow Kennard & Co., Boston", brass case with bevelled glasses, white enamel dial with arabic numerals and blued steel hands, movement serial #43878 the other for "Spaulding & Co.", twist reeded brass columns with Corinthian capitals, bevelled glass with convex side glasses, gilded dial mask with enamel time and alarm dials, blued steel hands, movement and case serial #10971.

Condition:

(1) polished brass case in good overall condition with some surface spots and discoloration, abrasion on top left corner, glasses good, movement strikes and repeats (2) brass case has age darkened with tarnish and surface discolorations, top area with scratch, dial mask with pitting and surface spots, glasses good, movement strikes and repeats.

Dimensions: 4in x 7.5in x 3.25in **Circa:** 1910

Sale Price: \$650 **High Estimate:** \$400 **Low Estimate:** \$300

Lot 241: Two Repeating Carriage Clocks.



Description:

2 (Two) French, 8 day hour repeating carriage clocks with white enamel dials, the first in a gorge case with engraved front and back and engraved brass mask, hour strike and alarm, serial #5459 and the other in a corniche case with dial signed "S.&G. Gump Co. San Francisco", hour and half hour strike.

Condition:

Both running and striking; Gump clock with crack in upper right corner; both measure in the range of 6.5in to 7in to top of handle, sold as is. Gump's began retailing jewelry and other goods in 1861 and are still a going concern today.

Dimensions: 3.75in x 7in x 3.25in **Circa:** 1885

Accessories: Two Winding Keys

Sale Price: \$750 **High Estimate:** \$800 **Low Estimate:** \$600

Lot 244: French Carriage Clock with Repeat.



Description:

L'Epee, France, a 20th century repeating carriage clock, corniche case, roman numeral white enamel dial, blued steel Breguet style hands, and three train movement with lever platform sounding the hours in passing, and repeating the last hour on demand.

Condition:

Nicely polished case with crazing near base in finish, dial without hairlines, ticking and striking

Dimensions: 3.5in x 7in x 3in

Circa: 1950

Accessories: Key

Sale Price: \$275

High Estimate: \$300

Low Esimate: \$200

Do you own a carriage clock?

If so, you may have questions about your clock. Such as,

1. When was it made and by whom if it is not signed by a maker?

Many carriage clocks are marked by retailers, such as “Tiffany”. Many times, the maker is not identified. However, the maker can often be identified by the construction style and other tell-tell signs found on the movement.

2. Should I clean the case, or not?
3. And the greatest question of all, what is its value.

This is the hardest question to answer because of the many variables, such as the condition of movement and case, the name and standing of the clockmaker, & the quality and rarity of the clock. We are not licensed, appraisers. We can only advise you where to look for comparable clocks so you can make your own "best guess" as to the actual value, always remembering the oldest approach to a value is "Willing Buyer, Willing Seller".

Members of our chapter have many years of experience collecting, researching and restoring carriage clocks. Many are willing to help you answer some of these questions.

This free service is for NAWCC members only.

Email questions and pictures of your carriage clock (one clock at a time, please) to:

Tom Wotruba: (USA) twotruba@sdsu.edu

Doug Minty: (Australia) dminty@optusnet.com.au

Ken Hogwood: (USA) kenhogwood@aol.com

Leigh Extence: (UK) leigh@extence.co.uk

Greg Cook (USA) gcookie16@yahoo.com

Link to the 1stdibs website:

<https://www.1stdibs.com/search/?q=carriage%20clocks>