

The Howard Banta Alarm Clock Chapter



Chapter 178 of the National Association of Watch and Clock Collectors

www.acc178.org

September 2019

President's Message

“We Need Your Help!”

In order to continue to have one of the best Newsletters in the NAWCC we need the help of members. In the past we have had great articles written by Bob Linkenhoker, several members, and me. Recently we have not received any articles from our members making it difficult to create an interesting and informative newsletter.

We need to keep our members and attract new members to the Alarm Clock Chapter by continuing to have excellent and interesting articles. Both Bob and I have reached out to the current membership in past Newsletters for help in this matter. This is another attempt to reach out. If you have an article or an idea please contact either Bob or me by email or phone to discuss the article or even if you have an idea that may be of interest, we can help with the article and continue to put out one of the best Newsletters in the NAWCC.

Also, if you have any questions or idea that would improve the Alarm Clock Chapter please let us know.

Thank you for your continued interest in this Chapter.

Vince Angell

1-916-952-4961 or email to Vince at:
phylathome@hotmail.com

EDITORS NOTE

The information for this issue came from a frequent contributor, Dennis Sagvold, and our President Vince Angell. We had to work very hard to get enough material for this issue. Please consider sending material!!!

IN THIS ISSUE

Page 1	President's Message
Page 2	Ansonia 'NACO' Alarm
Page 3	Starting a Collection
Page 4&5	Are These Alarm Clocks?
Page 6	Things You Never Notice
Page 7	Halloween

EDITOR'S NOTE:

Remember that there will be no newsletters unless the members of Chapter 178 send me information and pictures. I am sure that you all enjoy reading and looking at the various pictures in this and the other newsletters produced for this Chapter. Just remember unless you help there:

WILL BE NO NEWSLETTER

So please give some consideration to sending material with or without pictures.to

rlink3@juno.com, by phone at 951-898-5825
or mail at:
Chapter 178
7186 Calico Circle
Corona, Ca. 92881

Pictured below is an early Ansonia “NACO” SPECIAL alarm clock.

Does anyone have any idea what NACO stands for???



7" high including Top Ring

4" Time track

Brass ring

Brass alarm shut off

Brass Legs

Starting A New Collection By Vince Angell

Have you ever thought about starting a new Collection? Well, I have collected for many years and decided to advance my collection with an additional collection of alarm clocks. I thought of collecting many other categories of alarm clocks that I have never collected... Last year I started collecting alarm clocks that are different colors. Below is some of my bell top alarm clocks in different colors. So, the choice is yours. Collect what you like not what you already have.

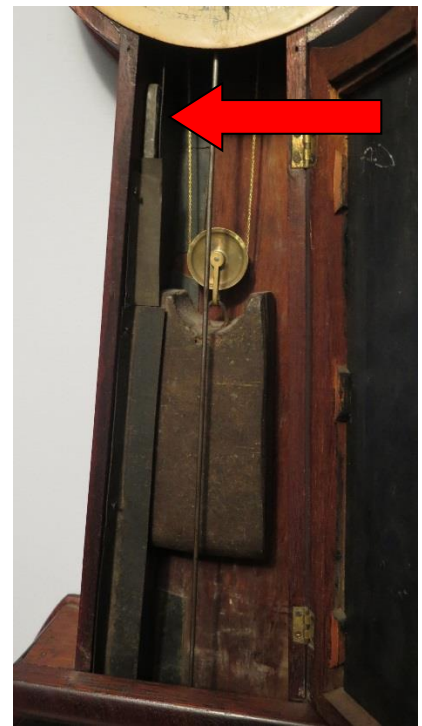


Can These Clocks WITH Alarms Actually Be Considered Alarm Clocks?

Here I present to the members of the Alarm Clock Chapter the following two clocks with alarms to decide whether or not they can be considered alarm clocks. I have had this discussion for many years with other alarm clock collectors and the consensus is mixed. I have my own ideas but would like to have your input to this question. Please email me at phylathome@hotmail.com with your response.

The first example is a clock that I have owned for many years. I had heard of these but for some time had never had the chance to own or even see one. At first glance it looks like an early banjo clock similar to an E. Howard banjo from the 1870's.

The first picture is of the clock with a brass bell on top. As you can see from the dial there is an additional winding hole just past 11 o'clock. When you open the glass on the throat you see the large weight that drives the clock but if you look closely to the left side you can see a small weight in a "channel" that is the weight that winds up with the winding hole at 11. Just like in kitchen clocks the center disc on the dial is the setting for the alarm and when the alarm goes off and rings the brass bell you can imagine how loud this would be. Therefore, WAKING YOU UP!!!!

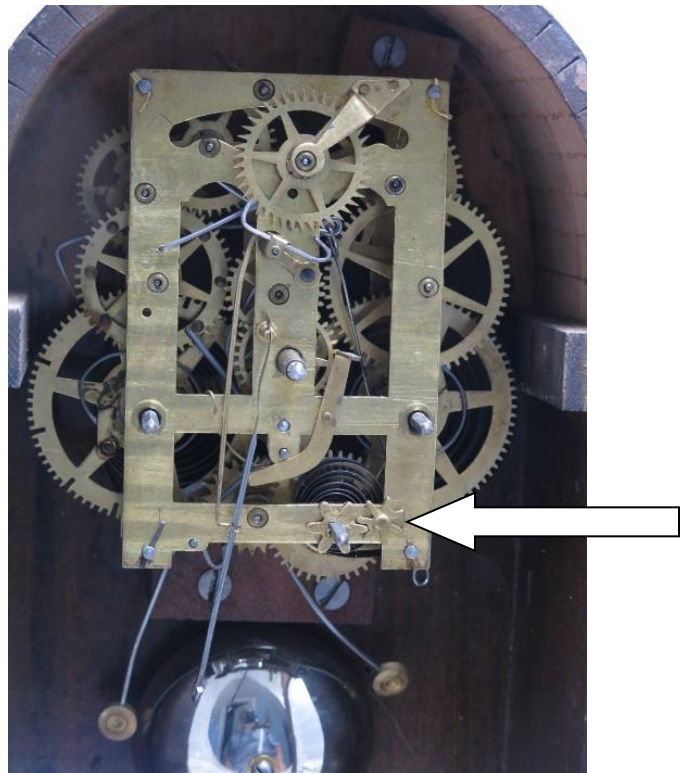


The next clock that I would like to share is what appears to be a typical 30-hour walnut shelf clock with alarm from about the 1880's. Upon further examine of the dial you see that it not only has the 2 winding holes for the time and strike it has an additional hole on the dial. As I discovered, it is the winding hole for the alarm. In one of the pictures you can see that the alarm mechanism is not an attachment at the case bottom on the backboard but it is between the plates.

This is 100% original to the clock and I have recently acquired another clock of this type with an 8-day movement and the alarm mechanism again is between the plates.

So now it is up to you to help me with my question.

**Can These Clocks WITH Alarms
Actually Be Considered Alarm Clocks?**



The Things You Never Notice Are Sometimes The “Best”

I have collected Parker Company alarm clocks and time pieces for over 30 years. One of the first Parkers that I purchased was about 25 years ago here in Sacramento. I was so excited that I just wound the clock and set the alarm and set it on the bookcase so I could watch it that day. The alarm went off and after that I just moved it around the bookcase just to dust. Years passed and I had so many Parkers I had to purchase a stack bookcase so that I could store and display them without having to dust...After that they were just admired and forgotten.

A few months ago, I took it out to show a friend and to my surprise I noticed that there was a label that gave directions on how to wind, set the clock and regulate the clock. In all the years of collecting Parkers I have never seen a label of any kind or have ever heard of one.

Below are pictures of the clock. So, when you buy something you can either inspect it totally or do what I did and then be surprised 25 years later.

