

The Howard Banta Alarm Clock Chapter



Chapter 178 of the National Association of Watch and Clock Collectors

www.acc178.org

December 2016

President's Message

Congratulations! We have made it through another fabulous year of searching out that illusive Alarm clock. Hope you have had luck in this pursuit. I have found a few alarm clocks that will be discussed in future newsletters.

As a Chapter of the NAWCC we will always strive to better our newsletters and get more people interested in the collecting of alarm clocks. I was recently at the Sacramento Valley Chapter #71 meeting and met a young man. In our discussions he said that he collected alarm clocks and probably had over a hundred. I immediately asked for his address and told him I would like to send him a couple of our newsletters and an application form if he decided to join. Within a couple of days he, Chris Johnson, sent in his \$15 for membership and he and I have been communicating back and forth. He has just purchased an alarm clock that I have never seen before and he has agreed to send in pictures and a short story of the clock. We hope to see this alarm clock and his story in the next Newsletter. Those that collect both American and Foreign will find this clock to be very unusual...Probably one that most of us have never seen.

I would like to thank our new member, Chris Johnson, for his offer and I hope that more members will respond with articles and pictures of their more unusual or favorite alarm clocks. Just send either Bob Linkenhoker or myself the idea and we will help with the pictures and the story.

With new members like Chris who has already offered to share his collection and knowledge, we will continue to grow to one of the best Special Interest Chapters in the NAWCC.

On another note, I am looking into the possibility of updating the Chapter website. I have asked a friend of mine to examine the site and give us ways to improve and update. Along with this we are looking into the possibility of making the site compatible with Smart Phones and Smart Tablets. This is a big step in the advancement of our Chapter for now and the future.

Wishing all of you a very Merry Christmas and a Happy New Year.

Happy Hunting!!!!!!!!!!
Vince

EDITOR'S NOTE

It is the end of the year and time again to renew your membership in the Howard Banta Alarm Clock Chapter of the NAWCC. Please fill out the form attached to this newsletter and mail it along with a check to our treasurer Mike Wilson.

IN THIS ISSUE

- Page 1** President's Message
Page 2 A pendulum Alarm Clock from Dennis Sagvold
Page 3-7 Article and Pictures of an Alarm Clock Rescue by Bob Schug
Page 8-9 How to Identify the Elusive Little or sometime called baby (with a small b) Ben

EDITOR'S NOTE: Much of this issue information in this issue is furnished by material received from Bob Schug. Some came from my own collection. It is essential that you send me material or there can be no newsletters. Please take a few minutes and send pictures and written material to me at rlink3@juno.com of Vince Angell at phylathome@hotmail.com

WITH OUT YOUR HELP THERE WILL BE NO NEWSLETTER

So please give some consideration to sending material with or without pictures to

rlink3@juno.com, by phone at 951-898-5825
or mail at:
Chapter 178
7186 Calico Circle
Corona, Ca. 92881

Dennis Sagvold sent me this letter and pictures.

I found this clock in an antique shop. Had no idea what it was. The paper dial made me think it was a USA or English product. What a surprise to find out when I got home it had a PENDULUM!!!

An Alarm Clock with a pendulum?? My first one.

The clock is 8 inches tall with a 3 ¾ inches time track.

Stamped brass ornament. Cast brass bell holder.

Thanks to Ernie Lopez (the manager of the West Coast Clock & Watch Museum) who identified it. It was made in France by Japy circa late 1870's

There are no markings on the case or movement.

Ernie also commented that there was a lower import duty or tax if the item had a paper dial verses an enamel one.



Note the wig-wag pendulum much like the ones used by Lux in the 1930's

The following article and Pictures are courtesy of Bob Schug

When this pathetic waif with its tattered garments and dirty face was dropped off at my Alarm Clock Orphanage it was obvious that it had suffered much abuse. Yet it still had a strong beating heart, crying for help. Alarm clocks with an advertising theme were usually produced in fairly small quantities and were then given away or offered as a premium to a purchase or some other gimmick. As such the owner would not have placed much value on them since the cost was nil. After the novelty of this free gift wore off many were tossed away or sent to the attic or cellar. So with a limited production and a low survival rate I decide that this clock deserved another chance. I have not seen or heard of another one or did I find any mention of them in the Van Vleet advertising in the Google searches I did.

So off to the Intensive Care Department.

There was no hope for the old case which was split in eleven places. In order to make a new case I would need to make a core to use in forming the body. The undamaged back plate of the case, which is a press fit into the case, was used to determine the diameter of the core. The case was straightened sufficiently to get the measurement for the depth of the core. Four 5 3/8 inch discs of white pine were cut. (2 of them 1/2 inch thick and 2 of them 3/4 inch thick) for a depth of 2 1/2 inches. Since the brass strip for the case is to be formed tightly clamped to this core, the four discs were then cut in half, making eight segments. The discs were then screwed together with one screw in each half and 2 1/4 inch dowels going through all eight pieces and one dowel through the center making a ridged core that could be easily removed from the finished case without damage.

Next a piece of 0.015 brass was cut to 2 5/8 X 17 1/2 inches. A little oversize but it will be trimmed when making the seam. Better too much than not enough. At 3/16 inch from each end of this strip a 90 degree bend was made in opposite directions in order to make the interlocking seam. The strip was then placed around the core to check for length. The 3/16 tabs had to be trimmed slightly. The tabs were connected loosely and the brass was slipped on the core. The stainless steel radiator hose style clamps were put on to pull the seam tightly together and pressed tight. With the clamps removed the tabs would now be peened together smooth.

With the body now formed it was time to tackle the forming of the 3/16 inch glass rim. I tried forming by spinning, but did not have a small enough tool. So I had to settle for peening on the steel backing dolly to get it as smooth as I could. Next the positions for the legs, bell post and hammer were measured from the old case, marked and drilled. Now the core can be removed by removing the screws and taking out the loose segments.

The end of the tunnel is beginning to look closer. The dial was a real mess. There was dirt, tears and missing pieces. I used Windows XP version of Paint to redo the dial completely. A new glass was cut and the movement which had practically no wear was run through the ultrasonic. I am now all back together and sitting on a shelf with all my brothers and sisters.

Van Vleet & co. was formed in 1884. In 1895 it merged with Mansfield Drug becoming the Van Vleet-Mansfield Drug Co. one of the largest wholesale drug companies in the country at that time. The remnants today are part of McKesson Co.

PS: If you are interested in cutting your own alarm clock glass, I find the best and cheapest source for the 0.060 to 0.070 inch thickness glass is at your closest Thrift store where they usually have bins of old picture frames.

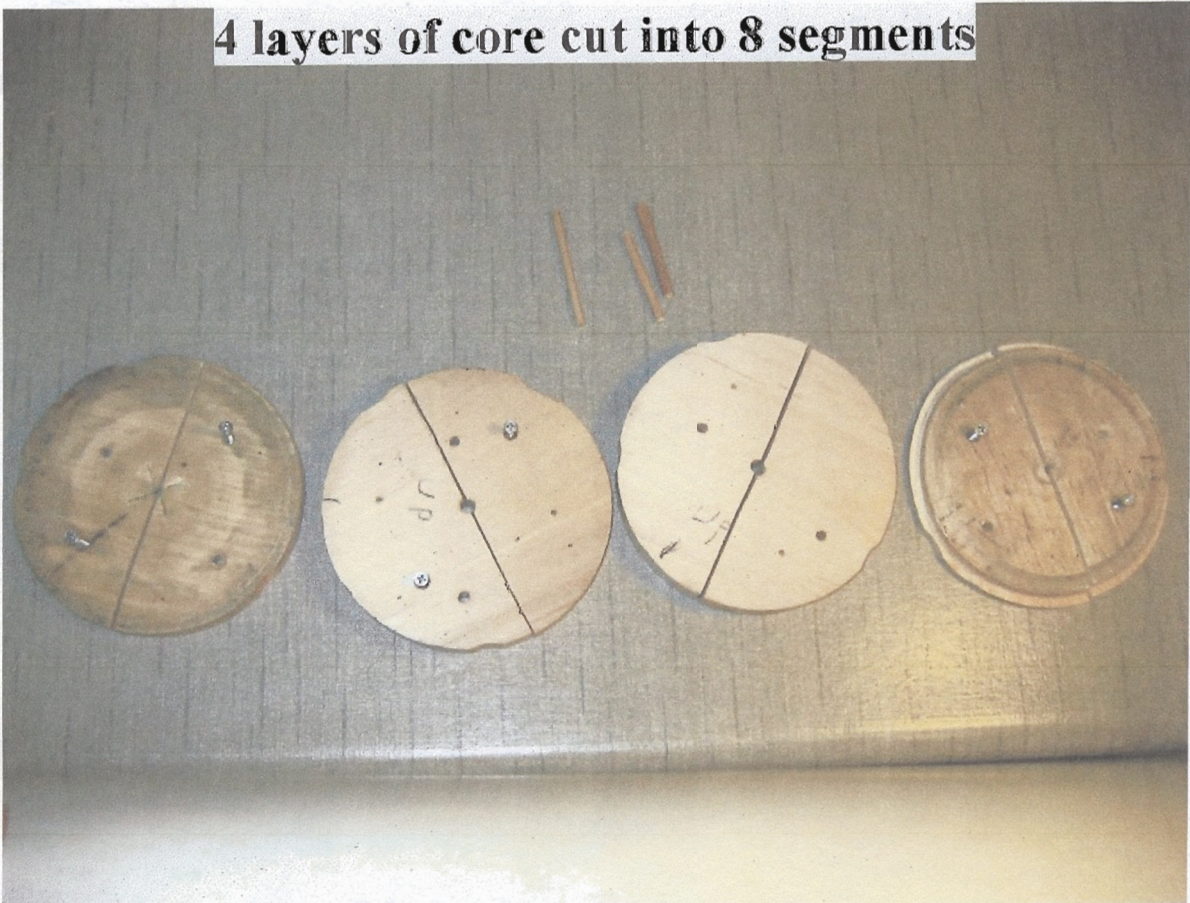


The Case was split in eleven places

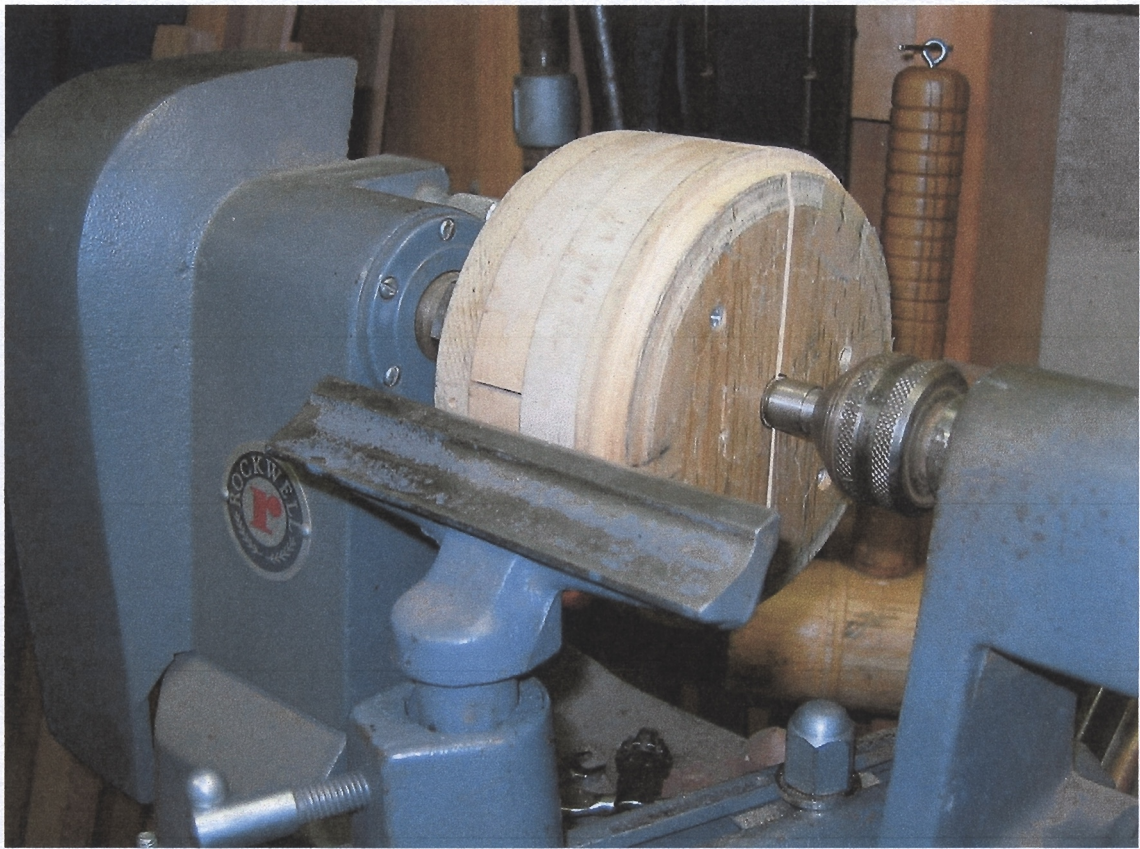


Pat'd Mar. 19, 1889 Jan. 29, 1901
The back a press fit was used to determine the diameter

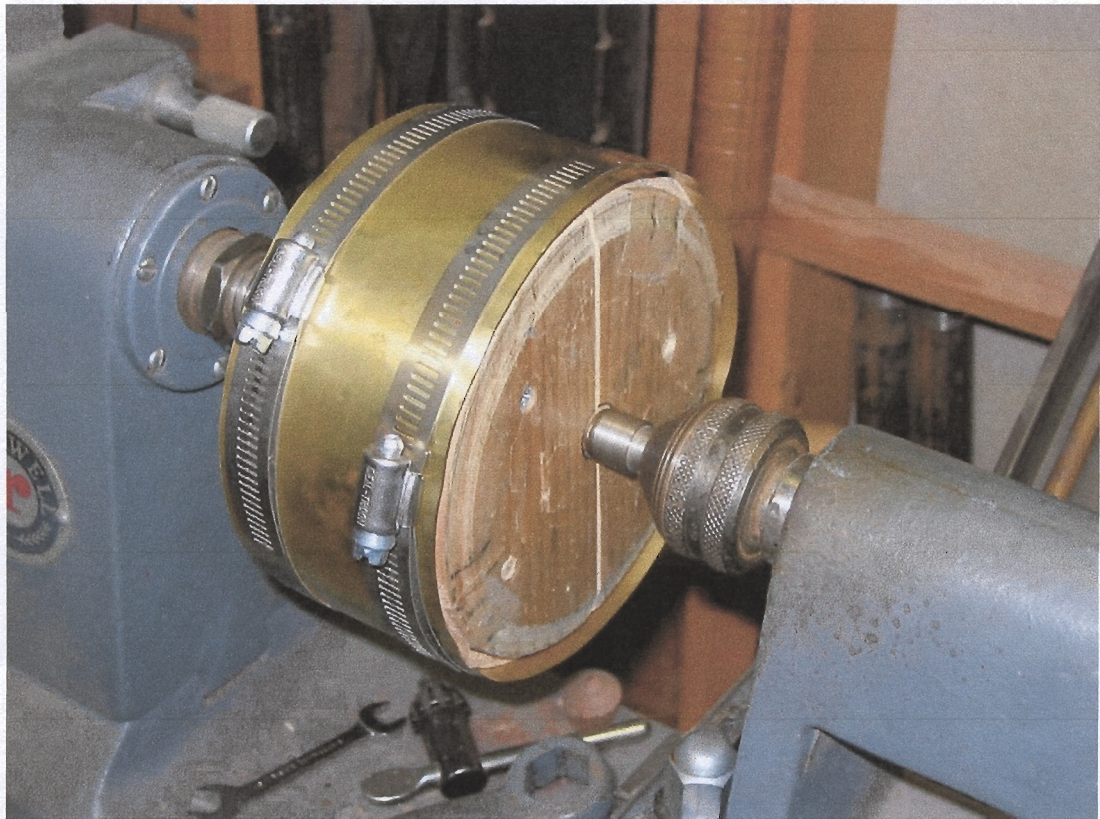
4 layers of core cut into 8 segments



Four Core pieces split into eight pieces



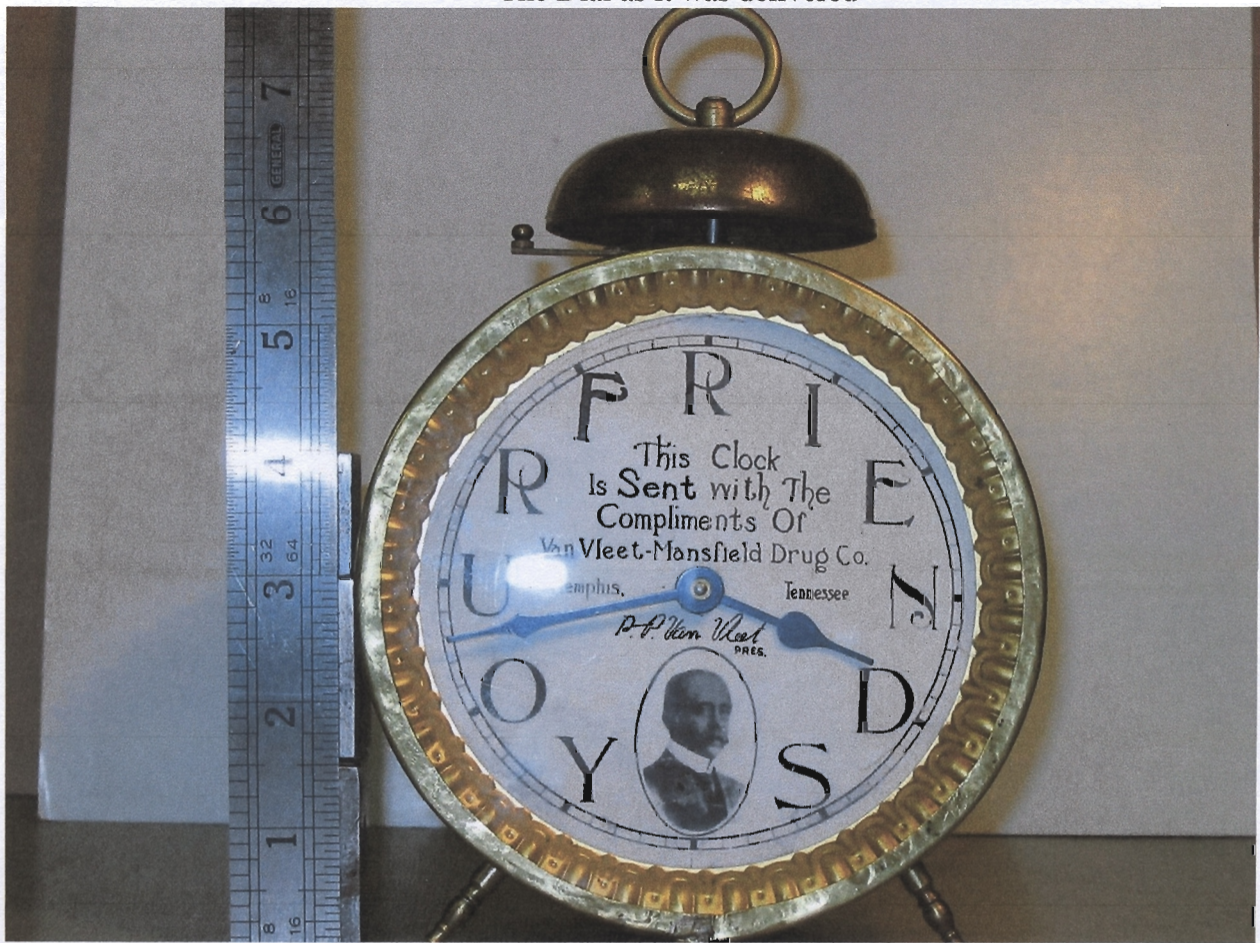
The core assembled and turned to size



The Strip of brass mounted and ready to have the ends peened over



The Dial as it was delivered



The finished clock

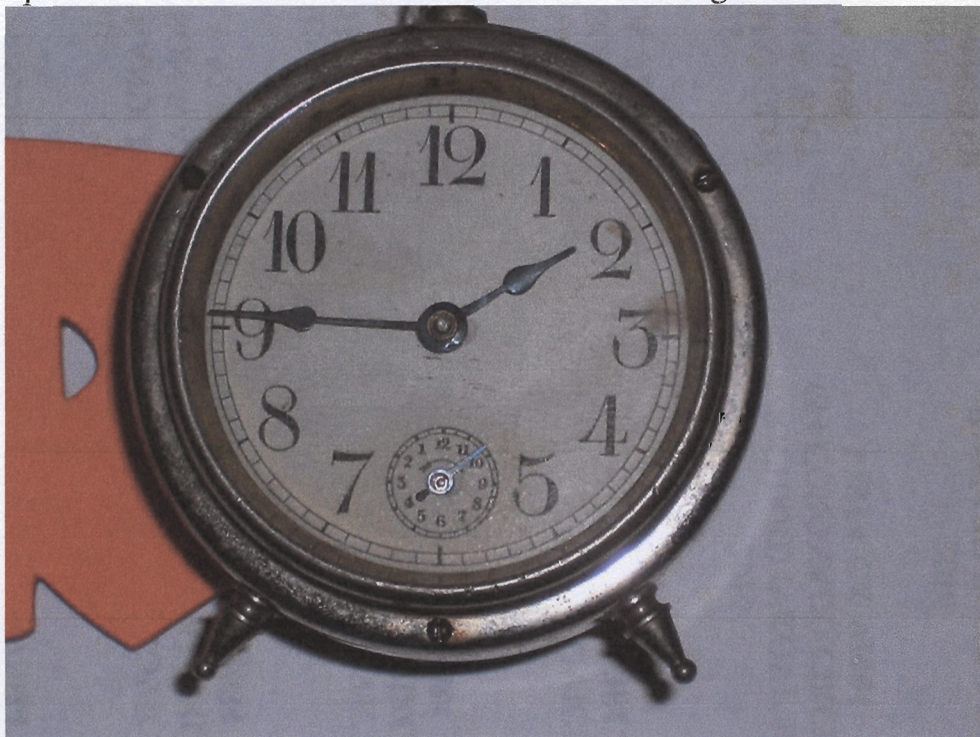
HOW TO IDENTIFY A LITTLE BEN by WESTCLOX

Picture courtesy of Bob Schug



The clock on the left is a Little Ben and the one on the right is a typical early Baby Ben.
Note the case of the Little Ben is wider and has one more step in it.

The next three pictures are of the Newsletter Editors clock with a mfg date on the movement of 7/28/10



There is no name anywhere either on the Dial or movement on this Little Ben



Note that the Alarm is set in the clockwise direction. Have any of you seen this on an alarm clock before?



Note the Hand set knob is not in the center of the back instead it is at the 12 o'clock position.