

Alarm Clock Newsletter

SPECIAL PULLOUT SECTION!

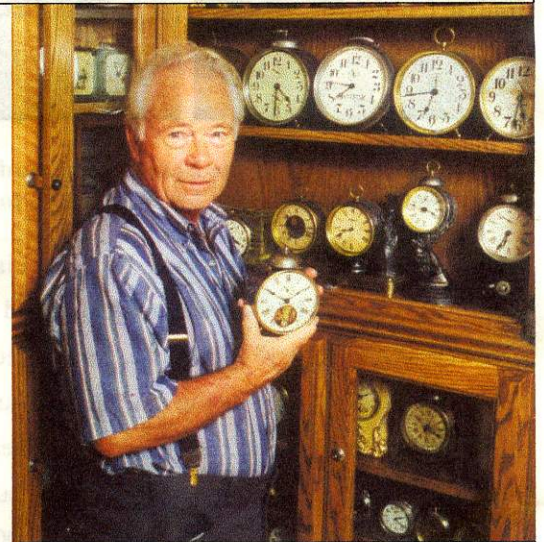
Included in this issue is the second part of the special pullout section on the Westclox Co. provided by Bill Stoddard of Bill's Clockworks in Flora, Indiana.

Newsletter Highlights

- First national meeting scheduled for the National Convention on July 7 at 3:00 p.m.
- Boos research continues.
- One Spring Alarm Clock Co.
- National Alarm Clock Slide Program gets under way.

The Alarm Clock Chapter's First National Meeting

The chapter is busy getting ready for our first national meeting at the 2000 NAWCC Convention this July. Our founder, Howard Banta is unable to attend due to health problems and the gavel has fallen to your editor to conduct the meeting. Howard, Mike Wilson and I are currently working on a slide presentation of Howard's best alarm clocks for the meeting. We also hope to have some very interesting alarm clocks on display. We encourage all members planning to attend to bring an alarm clock to the meeting for Show & Tell. The meeting is scheduled for 3:00 p.m. on Friday — July 7th in room 104A.



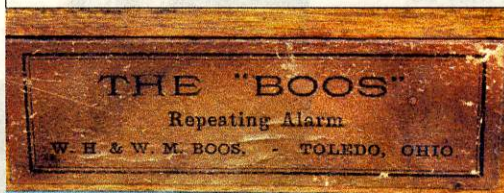
Howard Banta

Photo: Mike Wilson

"Boos" Alarm Clock

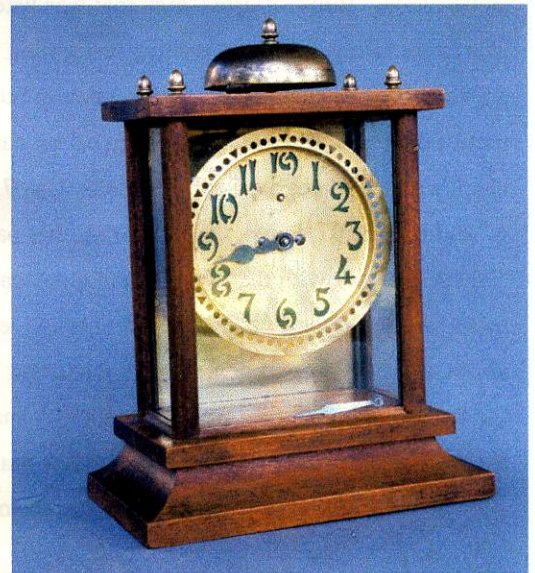
Our research into W.H. Boos and W.M. Boos continues. A trip to the Mormon Library in beautiful West Los Angeles produced some interesting results. In the 1910 Census there are several of the Boos family listed. The only ones that match the label are

William H. Boos, Head of household, born Oct. 1842 - age 68 and William M. Boos, born Oct. 1869 - age 40, father & son residing at 2045 (see "Boos" Alarm—next page)



The Label that started the Alarm Clock Chapter's first research project.

Right — Front View of the "Boos"



"Boos" Clock Co. continues



Left — Patent dates on the Brass "Boos" and
Right — the Break O'Day See Pictures — top next page.

Robinwood Ave. in Toledo Ohio . William H is listed as retired and William M. is listed as a "Jobber" and "Employed". The "nature of industry" for William M. is listed as "Premiums"?, I am not (see top of next page) sure because the handwriting on the micro film is not real clear. The words starts out OK, I can read the "PREMI" but after that it becomes a mess, see photo next page. The 1900 census list the son William M. first and then the father. So far, all I have is the index card for the census, I will be making another trip to the library to get the actual photocopy of the census records.

We have also acquired the previously unknown Brass model "Boos" Alarm Clock that was listed on Ebay. The Brass "Boos is current waiting restoration. The clock arrived with one foot replaced with a bolt & nut and missing part of the glass. It is the first to have patent dates on it. The clock's patent dates are Sept. 11, 1906; May 7, 07; May 28, 07 and Dec. 3, 07; Feb 4, 08. I have another parts clock, the "Break O'Day", with the same patent dates on it, but no manufacturer logo or name on the dial or movement, see photo above and top of next page. My current "guess" is that the Boos family had the "Boos" alarm clock manufactured for their business by one of the major clock manufacturers and the other 4 models were standard alarm clock models



Two iron case "Boos" Alarm Clocks.

manufactured by the same company.

We will continue to research the Boos family in Toledo and see if we can find (see top of next page)

"We have also acquired the previously unknown Brass model "Boos" Alarm Clock."



A Beautiful 8" wide Black Mantel "Boos" Alarm Clock.

“Boos” Clock Co. continues



Right: The newly acquired Brass “Boos” & above the Break O’Day Alarm with the same Patent dates.



the source of the brass faced alarm clocks. We did see a black mantel clock with the distinctive brass face style at the Greater Los Angeles Regional. I showed it to Howard, but he thought that it could be a marriage and we did not go any further. Little did I did not know at the time I would be researching them and would dearly want any information that that clock could provide. If you own an alarm clock or clock with the distinctive brass or silvered face style, or if you have knowledge of the source of the patent dates, contact Kim St.Dennis via email or phone.

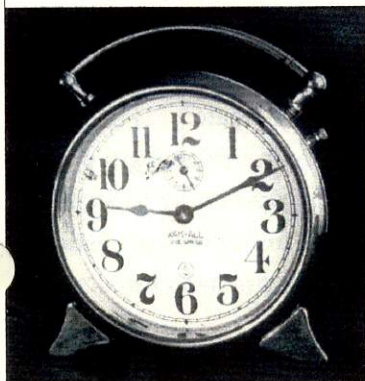
1910 Census Listing for the Boos Family

gliah	Servant	Punatfamily H	No. 2	George	No. 1		
hiah	Wife			George			
gliah	Jobber	Premiums	Camp	George			
gliah	Wife			George			
gliah	Servant	Punatfamily H	No. 2	George	No. 1		
gliah	President	Carina Woodard H	No. 2	George	No. 1		

“William H is listed as retired and William M. is listed as a “Jobber” and “Employed”. The “nature of industry” for William M. is listed as “Premiums”?

2020/108/126	✓	Linea Mary		7	17	5	
		Boos William H		44	68	10	
		William H		2	40	10	
		Lura		5	38	10	0
2022/109/127	✓	Winter Theresa		7	22	5	
		Russell Charles A		44	57	10	1

One Spring Alarm Clock Co.



Photos courtesy of Dean Taylor

Dean Taylor sent some photos and a short note. Dean writes, “Few people have heard of the “WAK-ALL” alarm clock made by the “One Spring Clock Co.” of Syracuse, Nebraska.” He has restored a chrome one and two teal blue clocks in the past year (see photos). The patents were issued to Albert Kendle of Syracuse in May of 1926. Dean also included the name of Kendle’s granddaughter who has the original blueprints and patents for the clocks. We will get in touch with her and write more about this interesting alarm clock in a future newsletter.

The Alarm Clock Chapter # 178

7334 Bonnie Place
Reseda CA 91335

Howard Banta—President email "hbanta@socal.rr.com"
Mike Wilson—Treasurer email "oldephotog@earthlink.net"
Kim St.Dennis—Secretary email "cstdennis@earthlink.net"

Phone: 818-349-8031
Fax: 818-886-5334
Email: cstdennis@earthlink.net

National Association of Watch & Clock Collectors

We're on the WEB
alarmclockchapter.com


Alarm Clock Chapter # 178

Alarm Clock Slide Presentation

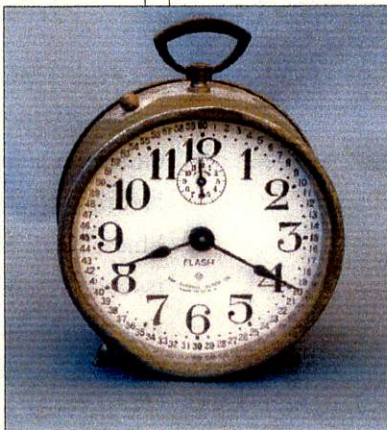
The Chapter is currently working on several slide programs for national. We have 3 full slide trays and now have enough new alarm clocks to do a 4th. We would like our members to have the opportunity to contribute to the new slide program. We are looking for any rare or unusual alarm clocks. For the slide program we will need 4 to 5 slides of each alarm clock. A front view, 3/4 front view, side view, rear view and bottom view if applicable. A 3/4 front view can be seen in the above "Red Iron Case "Boos"" photo above. The camera should be level with the alarm clock you are photographing or a little above like the photo to the right. A brief written description is also required to help with the



An Red Iron Case "Boos" from my collection. Editors note: All the ones I have seen on Ebay have had the Bezel missing. Howard is not certain about the Red finish, any comments?

audio portion of the Program. Please submit all material to Howard Banta at the address above. Also if you have any suggestions for a national program or feature you would like to see done, feel free to contact Howard or myself at the Email or address above. **Editors note:** Computers are a wonderful things. Just as we were about to go to press with Volume # 1 – Issue # 1, my computer's motherboard died and went to heaven.

This happened during my weekly backup, taking with it the only backup copy of Volume # 1 – Issue # 1. Building a new computer, restoring my old harddrive data and reconstructing the newsletter took a great deal more time than I had anticipated. I apologize for the delay in publishing the first newsletter. **My thanks to Susan Jung & Mike Murray for suggestion regarding the newsletter's layout.**



Ansonia Flash from my collection
All Photos by Kim St.Dennis unless otherwise noted.

MOVEMENT NOTES

Dates are stamped on the movement plates of most Big Bens, Baby Bens and other Westclox products starting about 1902. Numbers only are used for the month, day and year or just the month and year.

Almost all Baby Ben and Chime alarm movements were nickel plated through 1950.

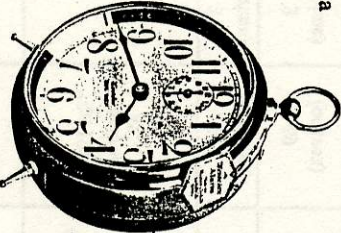
BIG BEN MOVEMENTS

1. Used through mid-1912, this movement has the same gear train as type 2 but does not have removable mainspring bridges.
2. Used from mid 1912 until 1956 with minor changes in "Loud Alarm" clocks. It has removable mainspring bridges. Made thinner in 1946 so the Loud Alarm could use the same case as the Chime Alarm.
3. Chime Alarm movement introduced in 1931 with "first he whispers, then he shouts" ads and used until 1956.
4. A full size single key wind movement still using brass plates introduced in 1956.
5. A much smaller single key wind movement with aluminum plates.

BABY BEN MOVEMENTS

1. Used until mid-1914, this movement has both time and alarm mainsprings in going barrels which allows these clocks to be 1/16" thinner than later types. All Baby Bens have removable mainspring bridges.

Style 1a

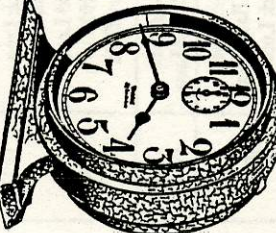


—when to get up for a drink, for that appointment with the
 friend, the best day you can have all these things
 planned. The Westclox alarm clock is the most
 reliable, accurate, and beautiful. A fresh
 unopened Westclox alarm clock is the most
 than usual—because every day on good timekeeping ahead of every
 thing else.

He tells you when to drop all Westclox are that way: the
 your evening and start the next name. Write on the dial and
 when to look at those beautiful ring in the mark of faithful
 when to be off downtown on time timekeeping.

Western Clock Co.—makers of Westclox
 La Salle, and Peoria, Ill., U. S. A.

BIG BEN



No. 833289	Nickel	Back	3.30
No. 833290	Nickel	Case	3.30
No. 833301	Dial	Green	3.30
No. 833302	Green	Green	3.30
Laminated Dial			
No. 833289	Nickel	Back	3.30
No. 833290	Nickel	Case	3.30
No. 833301	Dial	Green	3.30
No. 833302	Green	Green	3.30
Laminated for \$1.15			

Height, 5 1/2 inches; 1 1/2 inch fill
 dial, back going, dust-proof, rain 22
 hour, steady and repeat alarm, de-
 tachable battery, D.A. mechanism.

2. In use from 1914 until 1926, this movement has a going alarm barrel and a winding time barrel.
3. This movement has winding barrels for both mainsprings and was used from 1926 through 1934.
4. Used from 1934 through 1960, this movement has the alarm winding key positioned lower.
5. Introduced in 1960, this is a single key wind movement, still using brass plates.
6. Movement with aluminum plates (see Big Ben movement type 5).

CASE NOTES

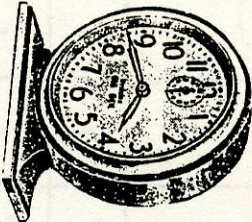
Big Ben style 1 has three assembly screws through the case front. 1a does not. All Baby Ben style 1 cases have three assembly screws through the front.

Various seals were stamped in the backs of style 1 Big Bens. The "pats. Infringed if resold under \$2.50" was also used on some mid-1913 baby Bens.

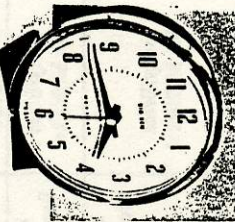
Style 2 painted cases have a crackle finish over gold base color until 1930 when solid color finishes with a metallic look were introduced.

Case styles 4a and 5a (Loud Alarms) are approximately 1/4" thicker than styles 4 and 5.

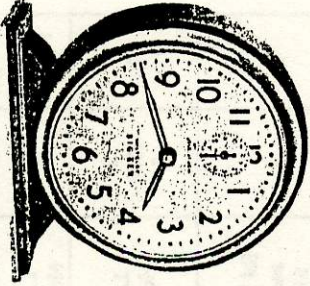
Big Ben and Baby Ben electric clocks were made in cases matching the keywound models in styles 5, 7 and 8.



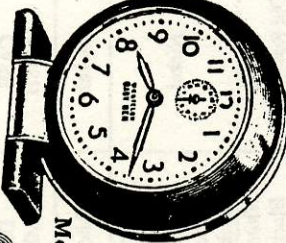
Style 3



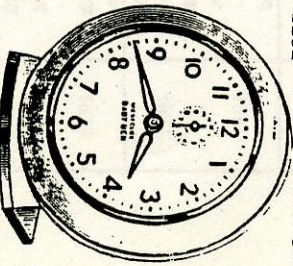
Style 7



Style 4



Style 5



Style 8

Model 61R-S Style 6

Model 61V-W Han-1

BIG BEN

BIG BEN AND BABY BEN IDENTIFICATION CHART

See other side for case style illustrations and movement types

BABY BEN

CASE STYLE	MOV'T TYPE	ID ON BASE	CASE FINISH	DIAL/ NUMERALS	YEARS MADE
1	1 -1912- 2	Leg Model (screws in front)	Nickel	White/Black Plain or Advertising	1908 1918
1a	2	Leg Model	Nickel	White/Black Advertising -- 1920 -- White/Black Black Lum.	1918 1935
2	2	"Rd 1927" and/or 48-A	Nickel Old Rose, Blue, Green Crackle -- 1930 -- Butler, Pink Blue, Green	White/Black Black Lum. Gold/Black Gold Lum. -- 1930 -- Ivory/Cold	1927 1932
3	3 (chime)	69 (concave)	Black/Nickel Butler	White/Black White/Black Lum.	1931 1934
4	3 (chime)	69 (convex)	Green/Nickel Ivory/Brass Gun M./Nickel	White/Black Brown Band Lum. Black Lum.	1934 1939
4a	2 (foud)	48-D (thick case)	Gun M./Nickel	White/Black Black Lum.	1935 1939
5a	2 (foud)	S4-D (thick case)	Gun M./Nickel	White/Black Black Lum.	1939 1946
5	2 (foud)	69-C	Gun M./Nickel	White/Black Black Lum.	1946 1949
5	3 (chime)	69-C (thin case)	Ivory/Brass Gun M./Nickel	Ivory/Brown Brown Band Lum. Brown Lum. White/Black Black Lum.	1939 1949
6	2 & 3	48-H	Ivory/Brass Gun M./Nickel	Ivory/Brown Brown Lum. White/Black Black Lum.	1949 1956
7	4	75-102	White/Brass Black/Nickel Black/Brass Metallic	White/Brown Brown Lum. White/Black Black Lum. Metal Finish	1956 1964
8	4 ----- 5	53647 -plastic- 58055	White/Brass Black/Nickel Fashion Brite	White/Brown Brown Lum. White/Black Black Lum. Fashion Brite	1964 1982

CASE STYLE	MOV'T TYPE	ID ON BASE	CASE FINISH	DIAL/ NUMERALS	YEARS MADE
1 (thin)	1	Leg Model	Nickel	White/Black Advertising -- 1920 -- White/Black Black Lum.	1912 1914
1	2 -1926- 3	Leg Model	Nickel	White/Black Black Lum.	1930
2	3	"Rd 1927" and/or 61-A	Nickel Old Rose, Blue, Green Crackle -- 1930 -- Butler, Pink Blue, Green	White/Black Black Lum. Gold/Black Gold Lum. -- 1930 -- Ivory/Cold	1927 1932
3	3	61-L (concave)	Black/Nickel Maroon/Copper Gray/Brass? Ivory/Brass?	White/Black White/Black Lum.	1932 1934
4	4	61-N (convex)	Ivory/Brass Gun M./Nickel	White/Black Brown Band Lum. Black Lum.	1934 1939
5	4	61-R	Ivory/Brass Gun M./Nickel	Ivory/Brown Brown Band Lum. White/Black Black Lum -- 1948 -- Solid Brown Lum.	1946 1949
6	4	61-V	Ivory/Brass Gun M./Nickel	Ivory/Brown Brown Lum. White/Black Black Lum.	1949 1956
7	4 -1960- 5	61-Y	White/Brass Black/Nickel Pink, Blue Gold or silver	White/Brown Brown Lum. White/Black Black Lum. Metal Finish	1956 1964
8	5 ----- 6	53632 -plastic- 58056	White/Brass Black/Nickel Fashion Brite Gold or silver	White/Brown Brown Lum. White/Black Black Lum. Metal Finish Fashion Brite	1964 1982

STANDARD COLOR COMBINATIONS FOR STYLES 4 THROUGH 8

Ivory or white cases are trimmed in brass and have ivory or white dials with brown numerals (black numerals for style 4 only) and brown banded or solid brown luminous dials. Gun metal (metallic black or gray) or black cases are trimmed in nickel (except most style 7 Ben cases are trimmed in brass) and have white dials with black numerals or black luminous dials.

July 16, 1912	1,033,020	May 31, 1911	Clock Spring Barrel	Going barrel with easily removed cover (bayonet mount)	George Kern
Sept. 23, 1913	1,073,608	June 29, 1911	Clock	Clock case in which it is easy to withdraw the movement, by loosening the pendant and legs	George Kern
Nov. 18, 1913	1,078,858	Oct. 21, 1912	Alarm Clock	Rotary hammer alarm clock	George Kern
Feb. 10, 1914	1,086,719	Jan. 13, 1912	Clock	Removable bridge and retainer for Big Ben alarm mainspring	George Kern
March 10, 1914	1,089,648	Aug. 16, 1913	Alarm Clock	Alarm clock with 2 concentric bells	George Kern
May 12, 1914	1,096,542	Dec. 16, 1912	Automatic Set for Alarm Clocks	Alarm mechanism which will sound every 24 hours, particularly applicable to 8 day alarms	George Kern
May 2, 1916	1,181,557	Jan. 24, 1916	Alarm Clock	Alarm mechanism which shuts off after predetermined period. Uses worm gear. (Westclox 8 day alarm ca. 1930) (Orig. a Seth Thomas Patent)	Frank X. Wehrle
April 15, 1919	1,300,278	Feb. 27, 1919	Alarm Clock	The Big Ben style 1A case	George Kern
Nov. 9, 1920	1,358,457	June 15, 1920	Winding Key For Clocks	The flattened key used on Baby Ben	Norman T. Mills
Dec. 1, 1925	1,563,431	Dec. 17, 1923	Machine for Manufacturing and Mounting Pinions and Wheels	11 sheets of drawings	Andrew H. Neureuther
April 16, 1929	1,709,146	Dec. 17, 1923	Machine for Manufacturing and Mounting Pinions and Wheels	11 sheets of drawings	Andrew H. Neureuther
March 8, 1932	1,848,520	Sept. 1, 1927	Movement Checking Machine	Machine using a beam of light for checking rate of clocks and watches	William Barton Edidson
May 17, 1932	1,858,563	Aug. 29, 1930	Alarm Clock	Chime alarm movement	Max Schlenker
May 24, 1932	1,860,153	April 6, 1929	Micrometer Adjusting Device for Clocks and Similar Mechanisms	Micrometer clock regulator	Andrew H. Neureuther

Bill Stoddard 6/2/90

PARTIAL LIST OF WESTCLOX PATENTS

Date Granted	Patent Number	Date Filed	Title	Summary	Patentee
Sept. 22, 1885	326,602	June 1, 1885	Manufacture of Clock Works	The basic Westclox lead alloy casting process	Charles Stahlberg
Jan. 4, 1887	355,624	Aug. 6, 1886	Manufacture of Shafts and Pinions For Clock works	Casting machine for wheel-pinion assemblies	Charles Stahlberg
July 23, 1895	524,984	Aug. 31, 1894	Stem Winding and Setting Watch		John G. Blessing
Oct. 28, 1902	712,325	June 18, 1902	Lantern Pinion	Westclox type wheel-pinion assembly	Andrew H. Neureuther
May 15, 1906	820,794	Aug. 19, 1905	Barrel Click Spring for Timepieces	The double ended click spring between the plate and the barrel.	Joseph Klein
June 4, 1907	855,775	May 21, 1906	Repeating alarm Clock	Basic idea of the intermittent alarm	William S. Hawthorne
Oct. 8, 1907	867,834	Dec. 28, 1906	Disk Feeding Machine		Andrew H. Neureuther
Oct. 8, 1907	867,870	Aug. 20, 1906	Watch Barrel	Winding barrel Bindschedler	Theodore Samuel
May 19, 1908	887,835	July 8, 1903	Mechanical Movement	For use in production machinery	Andrew H. Neureuther
June 9, 1908	890,066	Jan. 6, 1908	Alarm Clock	Basic idea for the bell back Big Ben case	George Kem
Nov. 17, 1908	904,333	July 1, 1908	Alarm Clock	Big Ben movement	George Kem
Dec. 15, 1908	906,915	Oct. 23, 1908	Lantern Pinion	Improvement on # 712,325	Andrew H. Neureuther
April 5, 1910	953,752	Oct. 8, 1908	Automatic Pinion Cutting Machine		Andrew H. Neureuther
April 5, 1910	953,753	Oct. 17, 1908	Automatic Pinion Cutting Machine		Andrew H. Neureuther
April 19, 1910	955,336	Feb. 15, 1910	Stem Winding and Setting Mechanism for watches		George Kem
May 24, 1910	958,930	Sept. 27, 1909	Alarm Clock	Improvement of #904,333	George Kem

IMPORTANT WESTCLOX DATES

- 1884 Stahlberg, et. al. arrive in Peru, IL from Waterbury, CT to make clocks based on Stahlberg's idea. Small factory established in back of Brylski's Department Store. First produced 1 clock/day, then 3 or 4/day, gradually increasing. Started with 8 people.
- 1885 Three story brick building erected. Production up to 25 clocks/day. United Clock Co. incorporated Dec. 23, 1885. Only 4" movements made at this time.
- Ca. 1886 Alarm clocks made with dial "Presented by G. William Schlichten, Co. LaSalle, Ill." Mr. Stahlberg gives alarm clocks to employees for Christmas inscribed on back "One of a hundred clocks that cost \$10,000."
- 1887 Bankrupt & reorganized. Western Clock Co. incorporated May 14, 1887.
- 1888 Bankrupt, reorganized by F. W. Matthiessen. The Western Clock Mfg. Co. incorporated July 7, 1888.
- 1889 Ernst Roth appointed general manager, serving for 34 years. 81 Employees. Old clocks "recalled" and remodeled for 75 cents each.
- 1895-6 50,000 units (largest order to date) for 9 O'clock Washing Powder.
- 1896 America, F. W. (later Ironclad), Framed Clock introduced. 200,000 clocks produced by 100 employees. 2" movements introduced.
- 1899 Pocket watches introduced.
- 1901 Production capacity 1,000,000 alarm clocks per year (500,000 units actual production). 285 employees.
- 1905 George Kern (Big Ben inventor) hired. 1,150,000 units (3500/day) produced by 410 employees.
- 1908 First of the Ben Ben patents granted.
- 1909 2,800 Big Bens sold to date.
- 1910 Big Ben officially introduced to the market. First advertisement Sept. 24, 1910 Saturday Evening Post, p. 39. 146,000 Big Bens sold to date. 2 million units produced by 880 employees.
- 1911 391,000 Big Bens sold to date.
- 1912 Company name changed to Western Clock Co. baby Ben first marketed (exact year unknown, may have occurred earlier).
- 1915 baby Ben officially introduced. 1st advertisement Sept. 25, 1915 Saturday Evening Post, p. 1. 3.3 million units produced by 1370 employees. Over 3 million Big Bens sold to date.
- 1917 Innovative worker's benefits introduced. Paid life insurance and a safety committee. Westclox name first used in advertising to make line known.
- 1918 Quarter Century Club organized for long-time employees (15 initial members). Big Ben Style 1a (dustproof) model introduced.
- 1919 Western Clock Co., Limited, Canada incorporated as a subsidiary.
- 1920 Luminous clocks now in full production. 4.1 million clocks and watches produced by 1870 employees.
- 1921 Pocket Ben first advertised. Night classes in math, drawing and slide rule offered for employees. Bluebird introduced. LaSalle Tool Co. purchased.
- 1922 New 5 story addition to factory. Wood cased Monitor introduced.
- 1923 Administration building under construction across the street from factory. Bunkie introduced. Canadian plant finished in Peterborough.
- 1924 Ernst Roth dies while serving as president and general manager.
- 1925 6.5 million clocks and watches produced by 2700 employees.
- 1926 LaSalle Tool Co. sold.
- 1927 Big & Baby Ben style 2 (first base model) introduced. Ben Hur introduced.
- 1928 Sterling Clock Co. of Meridan, CT is purchased. Tiny Tim introduced. Company park, tennis courts and horseshoe courts built.
- 1929 3058 employees (peak number of employees before depression).

- 1930 General Time Instruments Corp. formed as holding company for Western Clock Co. & Seth Thomas. Westclox pioneers unemployment benefit program. 3 LaSalle series (Dura case) models and Tom Thumb introduced.
- 1931 First electric clocks introduced (Big Ben electric, uses Sangamo synchronous motor). Pull wind auto. mirror clock introduced. Bantam, 3 luminous LaSalle (Dura case) clocks introduced. Chime Alarm (Big Ben style 3) introduced. General Time purchases Hamilton Sangamo Corp.
- 1932 Electric wall clock introduced, using the first Westclox designed manual start synchronous motor. Baby Ben style 3 introduced. America electric, Black Knight introduced.
- 1933 1908 employees on July 1 (minimum number of employees during depression - 1779). Handbag watch, Ben Bolt electric, Fortune, Hustler introduced.
- 1934 Canadian plant builds new addition. Pickwick introduced. 2312 employees. Style 4 Bens introduced.
- 1935 Stromberg Electric Co. purchased by General Time. Westclox safety record - 11 million hours without a lost time accident - 1st in nation. Ben Franklin electric, Country Club electric, LaSalle alarm clock, Tide introduced.
- 1936 Name changed to Westclox. 2800 employees. R. D. Patton first employee to reach 50 years of service, he started 1/1/1986 at 13 years of age. Style 4 Bens introduced. Wrist Ben introduced - 1st Westclox wrist watch. Fortune luminous, Greenwich, Silent Knight, Table Clock (World w/stars) introduced.
- 1938 Travalarm, Spur, Orb introduced.
- 1939 Style 5 Bens introduced. Leland introduced. Westclox Ltd., a United Kingdom subsidiary, formed.
- 1940 Max Schlenker appointed chief engineer. Production started on mechanical fuze parts for gov't.
- 1941 3700 Employees
- 1942 All non-war production ceased July 31.
- 1943 Waralarm in molded wood fibre case produced. OPA max. price \$1.65. Does not bear Westclox name. 7 lbs. brass per 1000 clocks instead of normal 300 lbs.
- 1945 Over 7 million fuzes produced in addition to more than 1 billion parts produced for arsenals and other manufacturing companies.
- 1946 Normal production resumed in plants worldwide. Westclox Proprietary, Ltd organized in Melbourne, Australia. Logan electric, Raven introduced.
- 1947 4000 employees. Westclox clock and watchmakers school organized.
- 1948 200,000,000 clocks and watches produced by Westclox to date.
- 1949 Style 6 Bens introduced. Name change: General Time Instruments Corp. to General Time Corp. New plant in Scotland producing 10,000 clock/week.
- 1951 4,000 employees
- 1952 Westclox awards first engineering scholarship.
- 1953 Plant in Athens, GA to be built for production of synchronous clocks (plant completed 1954). Australian plant discontinued.
- 1955 Clock of tomorrow introduced - uses a new single key wind chime alarm movement.
- 1956 More than 4,000 employees produce 40,000 timepieces/day. More than 40 million Big Bens and 28 million Baby Bens have been produced to date. Style 7 Bens introduced. New Big Ben single key wind movement. Baby Ben uses a modified "original" movement until late 1960.
- 1958 69 million Big and Baby Bens produced to date.
- 1959 53 millionth Big Ben produced - Westclox commended by House of Representatives.
- 1961 First automated clock assembly line. New plant in Toluca, Mexico under construction.
- 1964 Style 8 Bens introduced. Auto clock production transferred to Athens, GA. Est. 1.8 million/year.
- 1966 Auto clock manufacturing to be moved to new Davidson, NC plant. Athens plant to be consumer only. First mention of Gadsden, Alabama plant.
- 1968 General Time Corp. bought by Talley Industries.

Basic Westclox References in NAWCC Bulletins

NAWCC Bulletin whole #150, February 1971, pp. 884 - 891. "Long Alarms Made by Western Clock Co." by Adolph Amend. Good photos, description and comparison of a 1911 and a 1929 Big Ben, and a "Strenuous Long Alarm" ca. 1905.

NAWCC Bulletin whole #224, June 1983, pp. 360 - 361. Wilson (photos by Stoddard). Shows 3 photos of an early movement ca. 1890-1900.

NAWCC Bulletin whole #225, August 1983, pp. 446 - 463. "Introduction to Westclox" by Richard C. Tjarks and William S. Stoddard. This major article is a good introduction and overview of Westclox.

NAWCC Bulletin whole #231, August 1984, pp. 473 - 475. Tjarks and Stoddard. Five photos of early alarm clocks and correction of company incorporation dates. "Big Ben Alarm Dates" by Elmer Finken. An analysis of dates stamped on movements of Westclox clocks.

NAWCC Bulletin whole #260, June 1989, p. 255. "The Answer Box" regarding the Sterling Clock Co. bought out by Westclox and the pending donation of a set of Tick Talks to the NAWCC Museum by Jim Whitaker.

NAWCC Bulletin whole # 271, August 1991, p.466. "The Answer Box" regarding the 1970 reproduction of the leg model Big Ben.

NAWCC Bulletin whole #302, June 1996, pp. 377 - 378. Photo of the Baby Ben predecessor (1910 - 1912) by Robert M. Schug.

NAWCC Bulletin whole #312, February 1998, pp. 26 - 30. "Industrial Relations at Westclox Corporation, Peru, Illinois 1887 - 1980" by Lisa Krissoff Boehm.

Requests for Information

NAWCC Bulletin whole #198, February 1979, Jeffery Wood.

NAWCC Bulletin whole #208, October 1980, Tjarks and Stoddard.

Westclox Incorporation History

- December 23, 1885 United Clock Company
- May 14, 1887 The Western Clock Company
- July 7, 1888 The Western Clock Manufacturing Company
- October 13, 1908 Board of directors resolved to change company name to Western Clock Co.
- June 11, 1912 Stockholders approve name change to Western Clock Co.
- November 12, 1930 Stockholders of Western Clock Co. approve of plan uniting the company with Seth Thomas Clock Company by the formation of a holding company named *General Time Instruments Corporation*
- Late 1936 (October?) Westclox Division of General Time Instruments Corporation