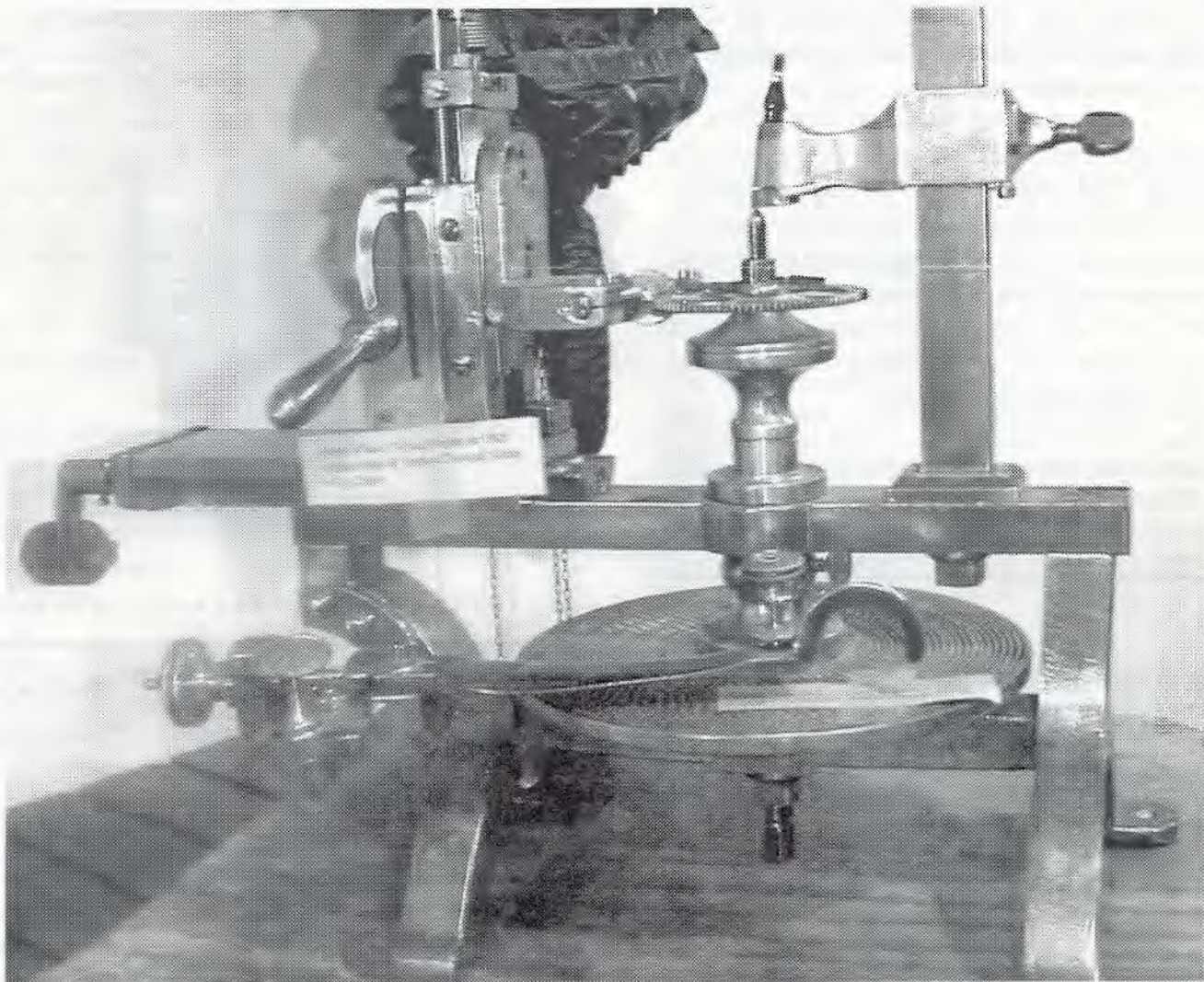


# Tool Enthusiasts' Round-Up

**In This Issue: Unusual Brass Tools**

◆ Upcoming Chapter Activities ◆ Wanted & Offered Classified Ads ◆



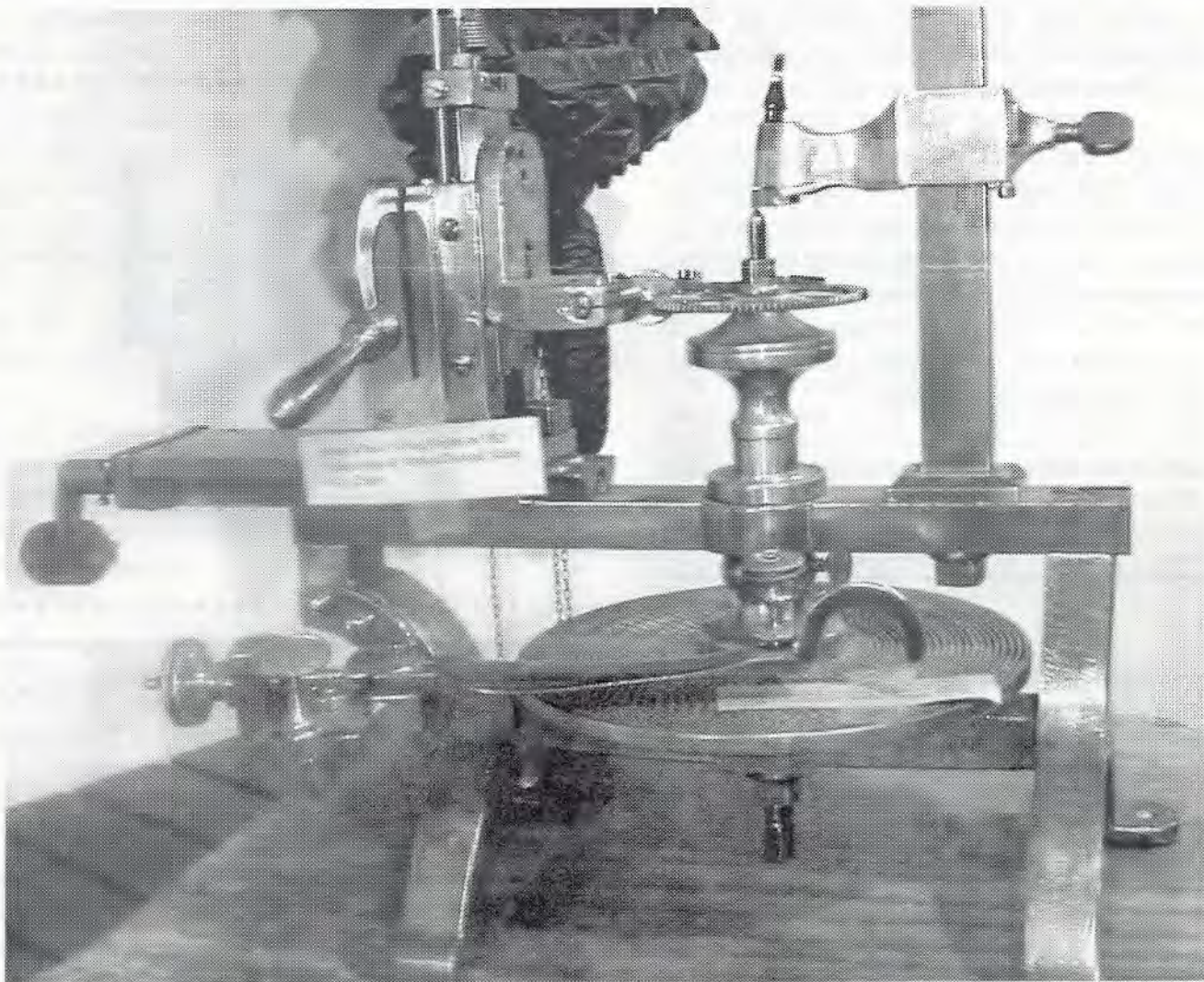
**Wheel Cutting Engine, ca. 1850**



# Tool Enthusiasts' Round-Up

**In This Issue: Unusual Brass Tools**

◆ Upcoming Chapter Activities ◆ Wanted & Offered Classified Ads ◆



**Wheel Cutting Engine, ca. 1850**



## Chapter #173 of NAWCC: Horological Tool Enthusiasts

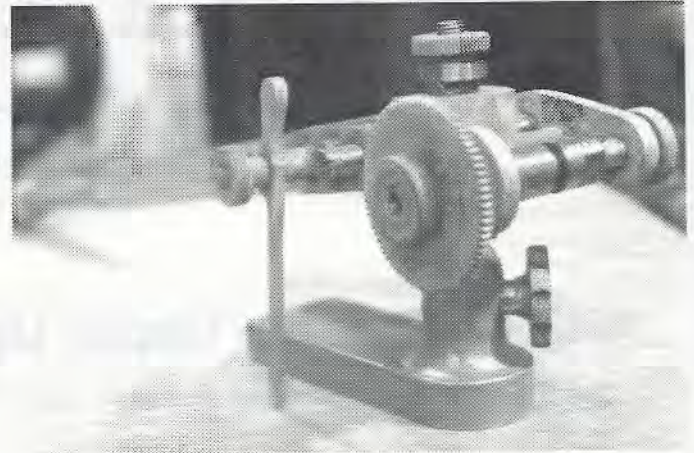
The *Tool Enthusiasts' Round-Up* is the newsletter of the National Horological Tool Chapter #173 of the National Association of Watch and Clock Collectors, Inc., a non-profit educational organization. This is a national chapter, and is open to any member of the NAWCC.

This chapter and its newsletter are intended to foster interaction among NAWCC members who share a common interest in the use and collection of horological tools of all sorts. If you have an item you have researched, a book of interest, or notes on a project you have made, please consider sharing your knowledge with others through this newsletter. Editorial help and writing assistance are available to help you organize an article. Submissions should be sent to the Editorial Director.

Annual chapter dues of \$10 will ensure that members in the Horological Tool Chapter receive the quarterly newsletter and are included in the Membership Directory when it is published. Members are also entitled to one classified ad (see last page) in each issue. If you are interested in joining this chapter, which will meet at various large regionals and also at the National each year, please send your annual dues to the Chapter Secretary/Treasurer.

For further information, please contact one of the #173 Chapter Officers.

## This issue focuses on Unusual Brass Tools

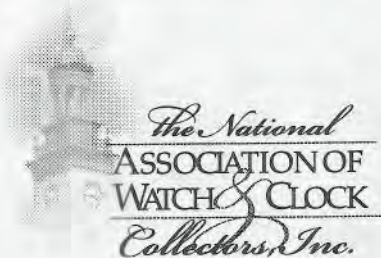


Harry Blair would like to know what this is.

### What is it?



Answer on page 11



## Chapter Meeting News

The Horological Tool Chapter will meet at the NAWCC National Convention in New Orleans in July. Look at the bulletin board at the event for the meeting time and location.

### Chapter 173 Officers:

**President:** Harvey Schmidt  
75-80 179th St. ■ Flushing, NY 11366 ■ (718) 969-0847

**Secretary/Treasurer:** Tom Hammond  
3258 Forest Gale Dr. ■ Forest Grove, OR 97116

### Newsletter Staff:

**Editorial Director:** Harry Blair  
7 Hansom Ln. ■ Marlboro, NJ 07746 ■ (732) 536-5328

**Senior Editor:** John Grass  
2850 Bay Rd. ■ Redwood City, CA 94063 ■ (415) 364-9697

**Senior Editor:** Bob Leavitt  
8032 155th Pl. ■ N. Palm Beach Gardens, FL 33418 ■ (561) 744-0248

**Production Director:** Lyle A. Waisman  
3023 N. Clark St., #308 ■ Chicago, IL 60657-5200



## President's Message

The February meeting of the Horological Tool Chapter #173 took place at the Florida Midwinter Regional in Ft. Lauderdale. Our featured speaker was Ray Marsolek who described the tools used by the NAWCC School of Horology at Columbia. He explained the choices involved in picking a particular brand of new tooling (Sherline) and the methods of teaching the use of these tools. Budget constraints and uniformity were the main factors in their choice. Traditional watchmaker's lathes and accessories are also used in the watch courses. Suitcase courses are also offered that enable the teachers to bring their instruction to the actual locations of the various chapters, rather than having the students come to Pennsylvania to learn.

The tool chapter also conducted a silent auction, proceeds of which were donated to the NAWCC Museum to help defray the cost of the Vandewoerd screw machine. Tools were donated by Dominick Calderone, Steve Lebduska and Harvey Schmidt. A total of \$1,200 was raised. There is still a long way to go to finish payment, so any contributions are gratefully accepted.

Our next meeting will take place at the National Convention in New Orleans in July. Hope to see you all there.

Dr. Bob Chapman, after 3 years of wonderful service as Treasurer and Secretary has retired, turning the job over to Tom Hammond from Oregon. We wish him well and hope for his continued good health.

Respectfully,



Harvey Schmidt, FNAWCC, President

We are proud to announce that Lyle A. Waisman of Chicago is joining our newsletter staff as a Production Director. Lyle is a young man with extensive experience in the graphic arts field and is the basis of the fresh new look in this issue. Welcome aboard Lyle, and great job!

## Did you ever wonder what happened to that famous pioneer, The American Watch Tool Co.?

*Submitted by Wade Tool Mfg. Co.*

*120 Eastern Ave., Chelsea, Mass. 02150*

The American Watch Tool Company, later to be known as Wade Tool Company, was founded in 1872 in Boston, Mass., producing small precision jeweler's lathes. In 1918, Mr. Walter H. Wade bought the American Watch Tool Company, and began the manufacturing of machinist bench lathes, pinion cutters and profilers. The company moved to a larger facility, located in Waltham, Mass. For several years the lathe line was manufactured under the name "Wade-American." In the early 1920s the American name was dropped and the company became the Wade Tool Company. During that time product lines were developed and improved, and a screw cutting lathe—the Model 8A—was added to the line. In 1925, in an effort to diversify, a Printer's Lineup Table was developed which proved so successful that it became the standard for the industry.

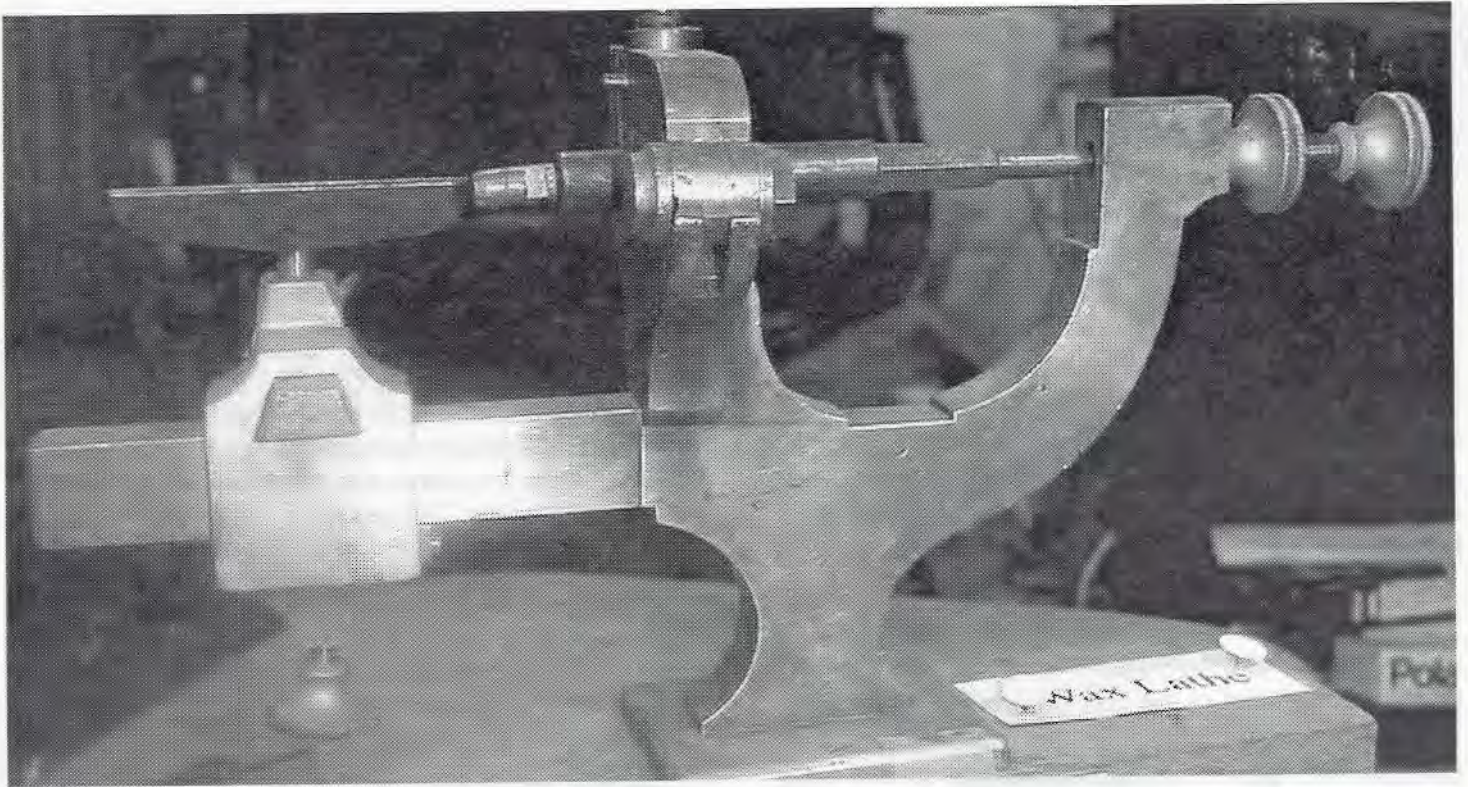
During WWII, Wade Tool was producing the model 8A Toolmakers Lathe for factories in England. Wade had just completed finishing an order for the English government and had later received a telegram stating that the ship containing the machinery was lost due to enemy action... "please resupply the machinery."

In 1961, the lathe business and the unique Wade trademark were sold to the Covell Manufacturing Company in Benton Harbor, Mich. Covell produced the Wade #94 & #98 Hand Turret Lathes and also converted the manual lathes into automatic turret lathes. In 1970, Covell was bought by Atlas-Clausing, who no longer wanted to offer the Precision Lathe Line, and offered it for sale. Later in 1970, the Lathe Line was bought back and moved back to Waltham, Mass., and began production again in 1971.

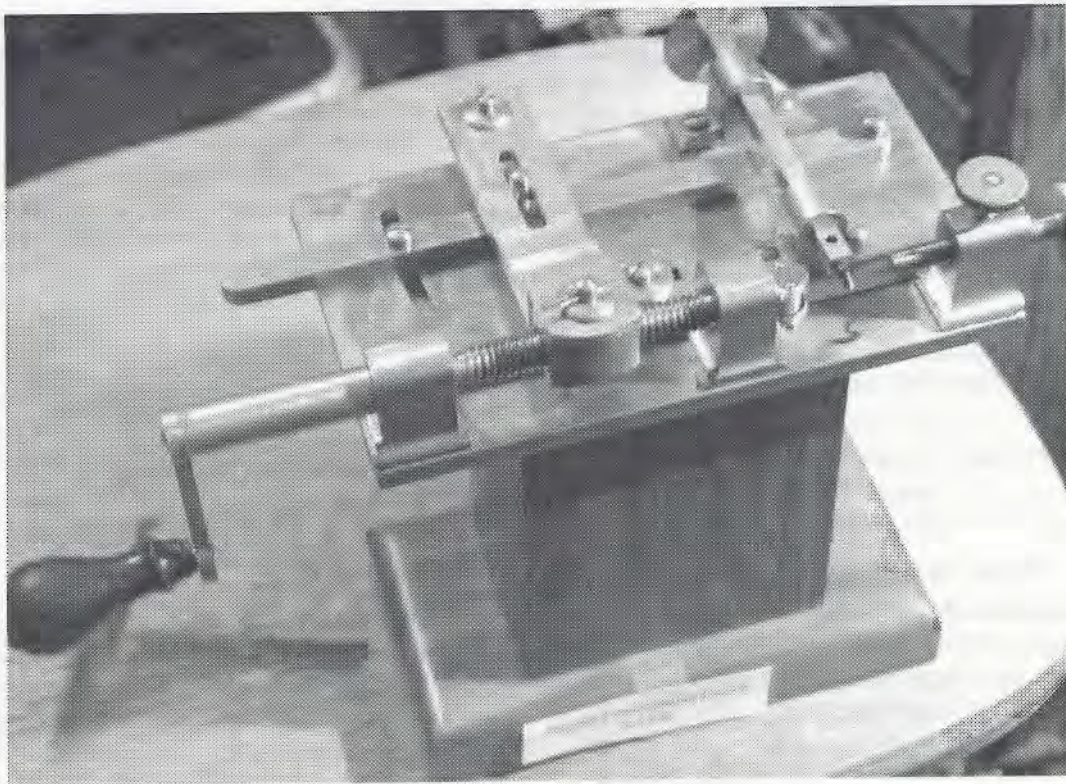
Wade supplied South Bend Lathe the Hand Turret Lathe models #94 & #98. South Bend converted these machines to automatic and sold the lathe under the name of the Prompt Turn Automatic Lathe. In 1985, under new ownership as Wade Machine Tool Manufacturing, Inc., the company moved from Waltham to a new and larger manufacturing facility in Chelsea, Mass.

Wade has been in the business of manufacturing quality precision lathes, and over the years have sold over 8,000 lathes that continue to out-produce and outperform all of the competition with greater accuracy. Wade Lathes have served not only industry, but US Armed Services as well. Perhaps the best known examples are the Wade 8A on the Battleship Massachusetts, and the Model 10B Lathe on the Atomic Cruiser Long Beach.



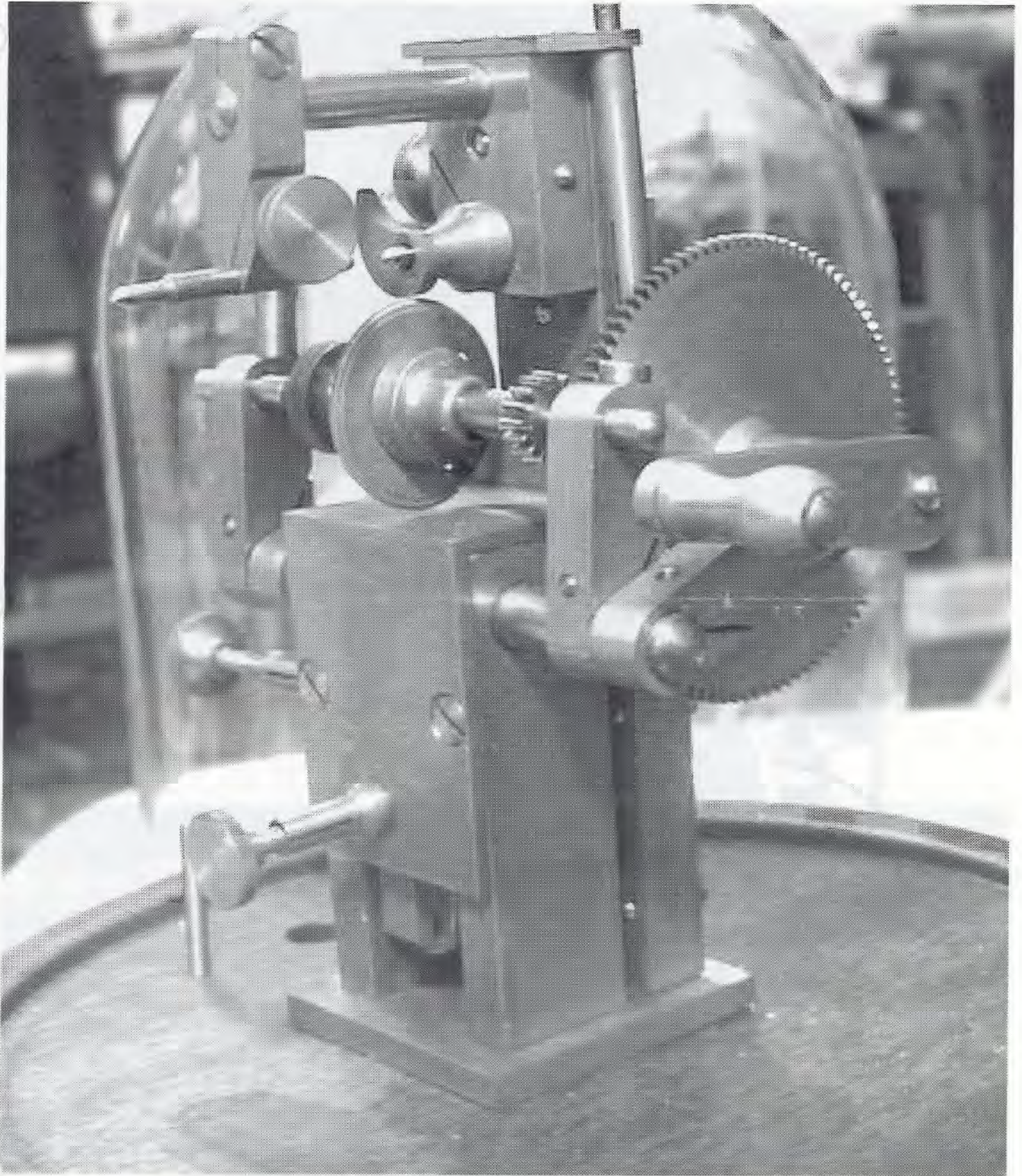


**Wax Lathe**



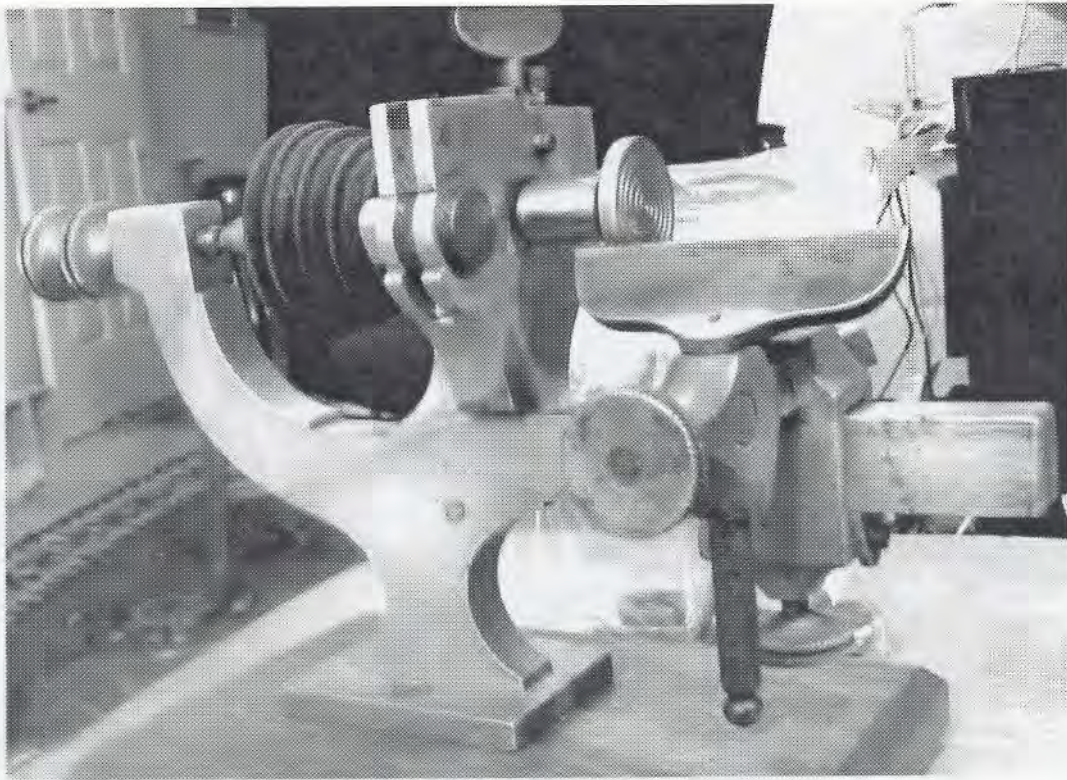
**Fusee Cutting Engine**



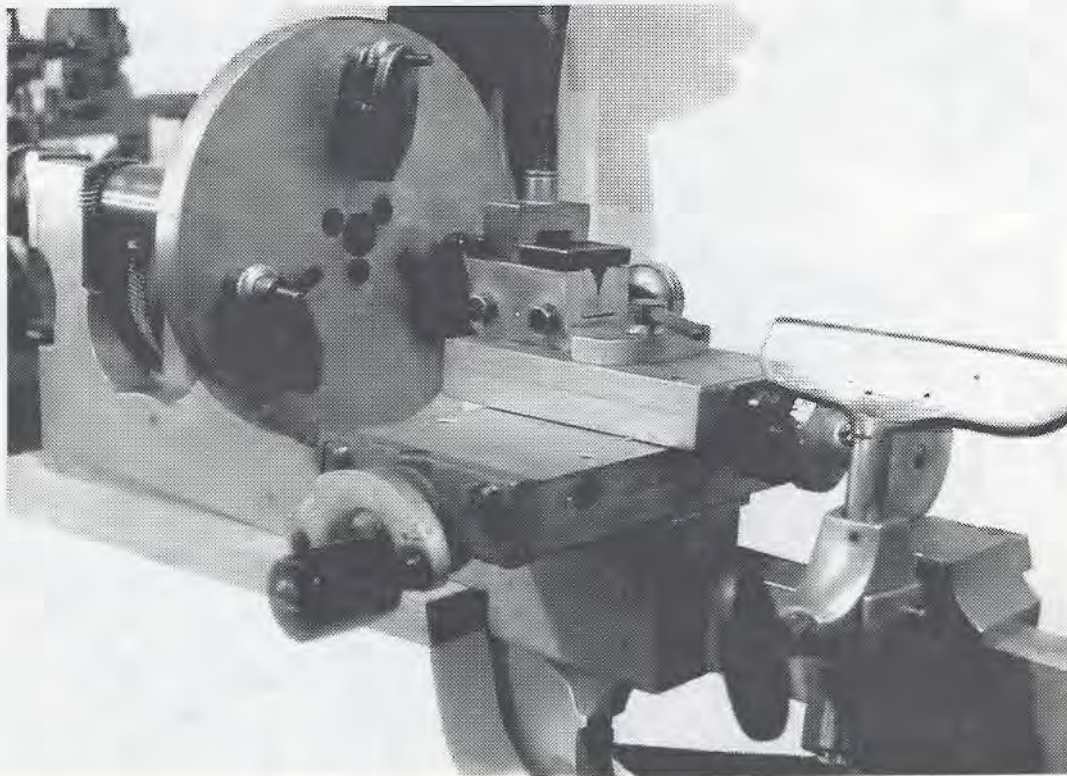


**Handwheel Operated Wheel Rounding-Up Tool**



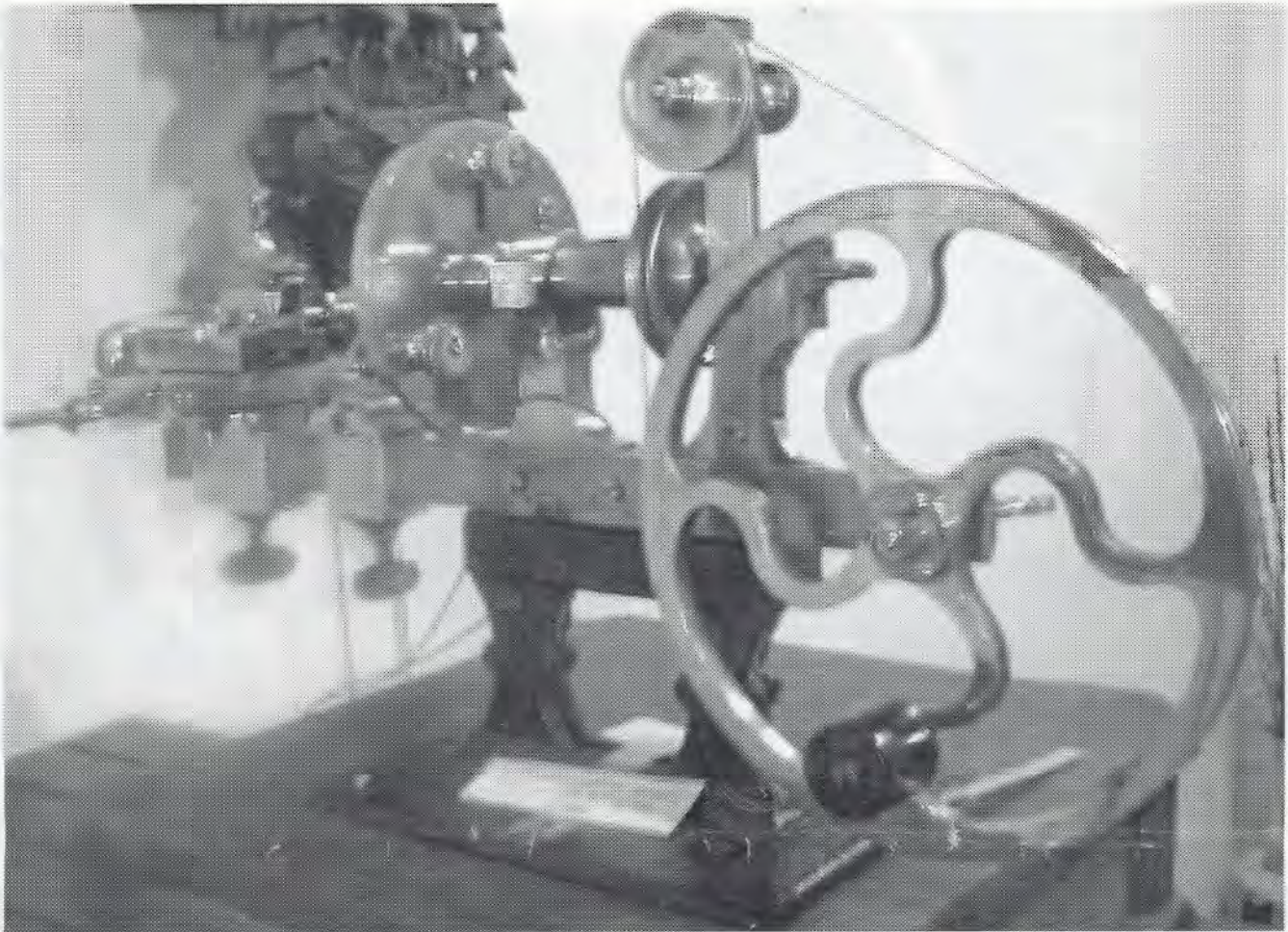


**Wax Lathe**



**Large Swiss Mandrel**



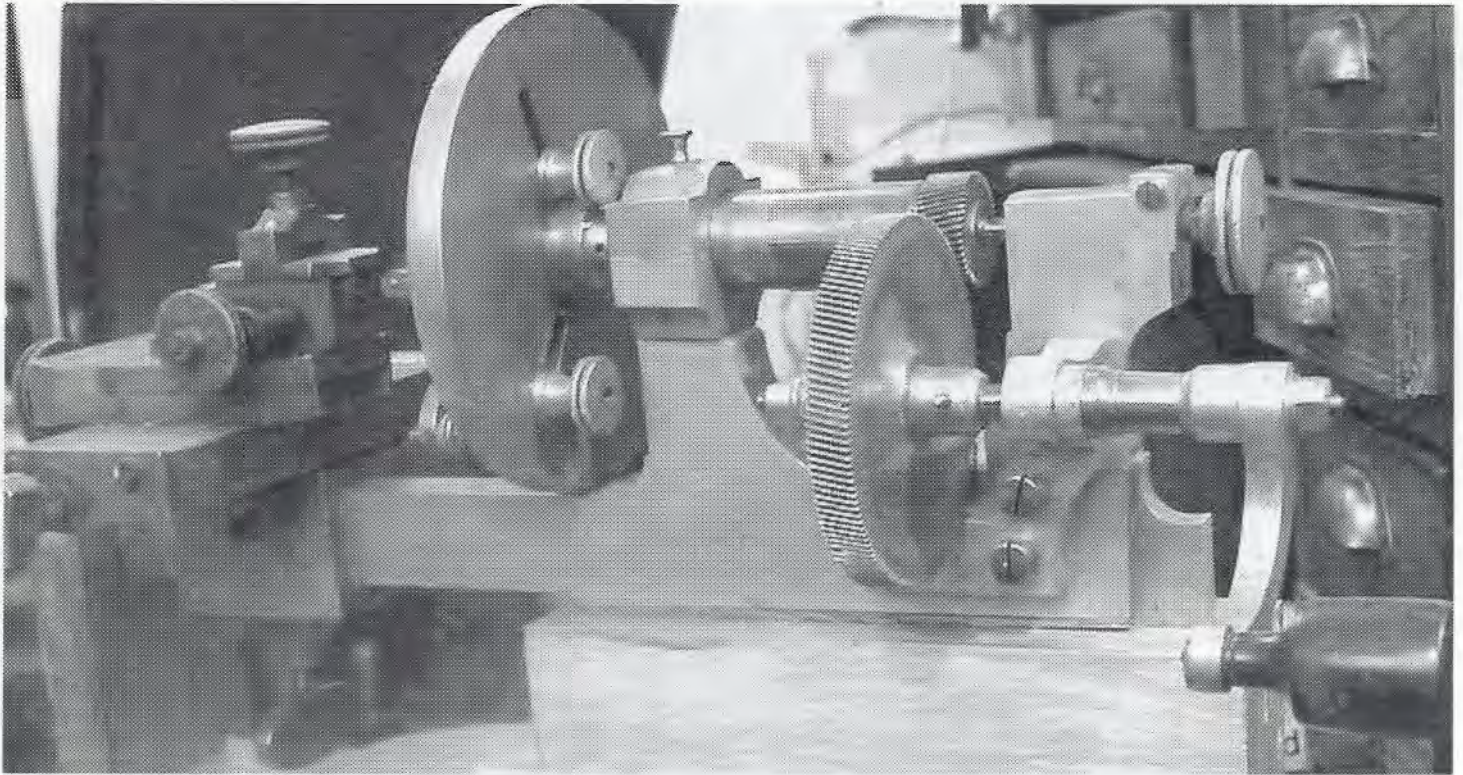


**Large Swiss Mandrel**

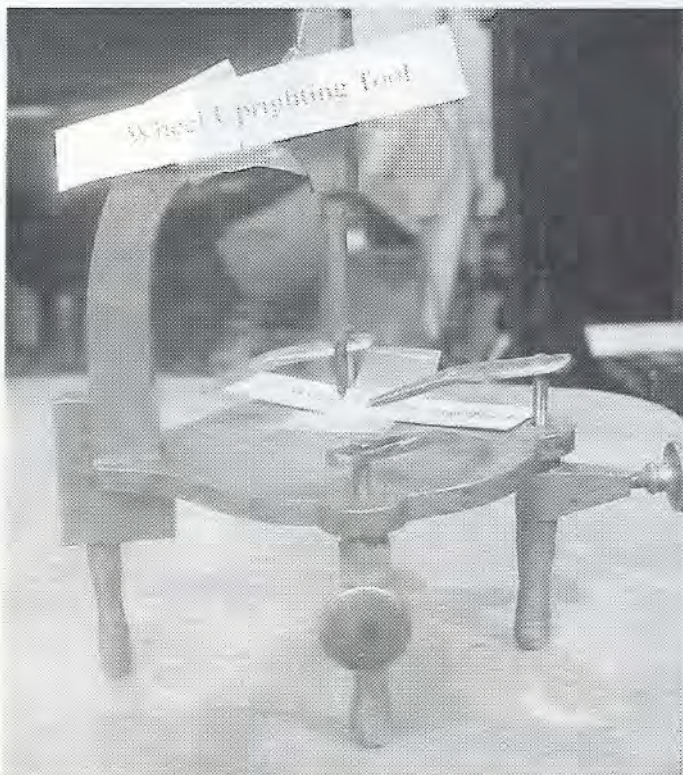


**Swiss Between Centers Lathe**

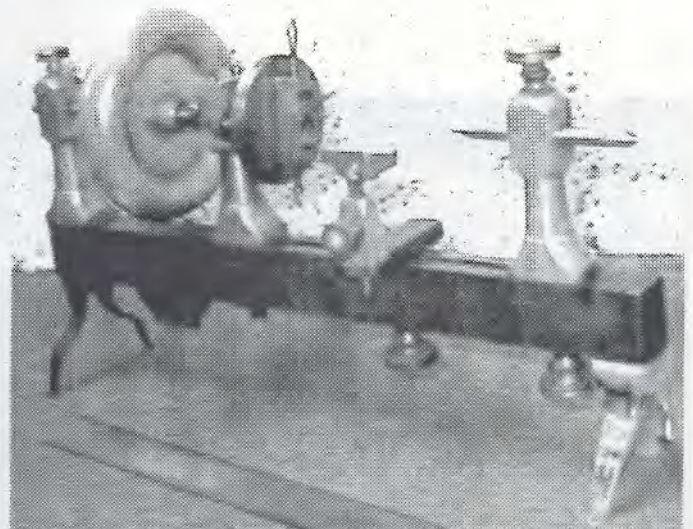




**Handwheel Operated Herringbone Gear Mandrel**

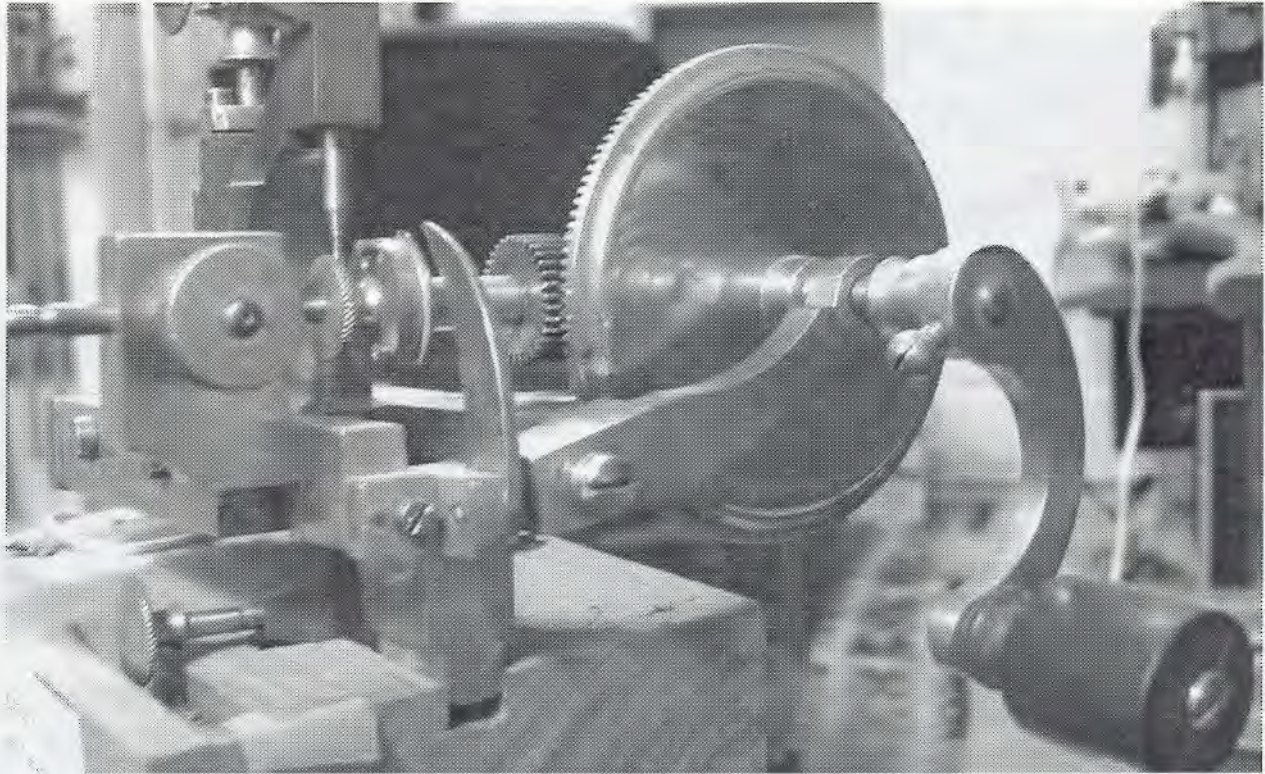


**Wheel Uprighting Tool**

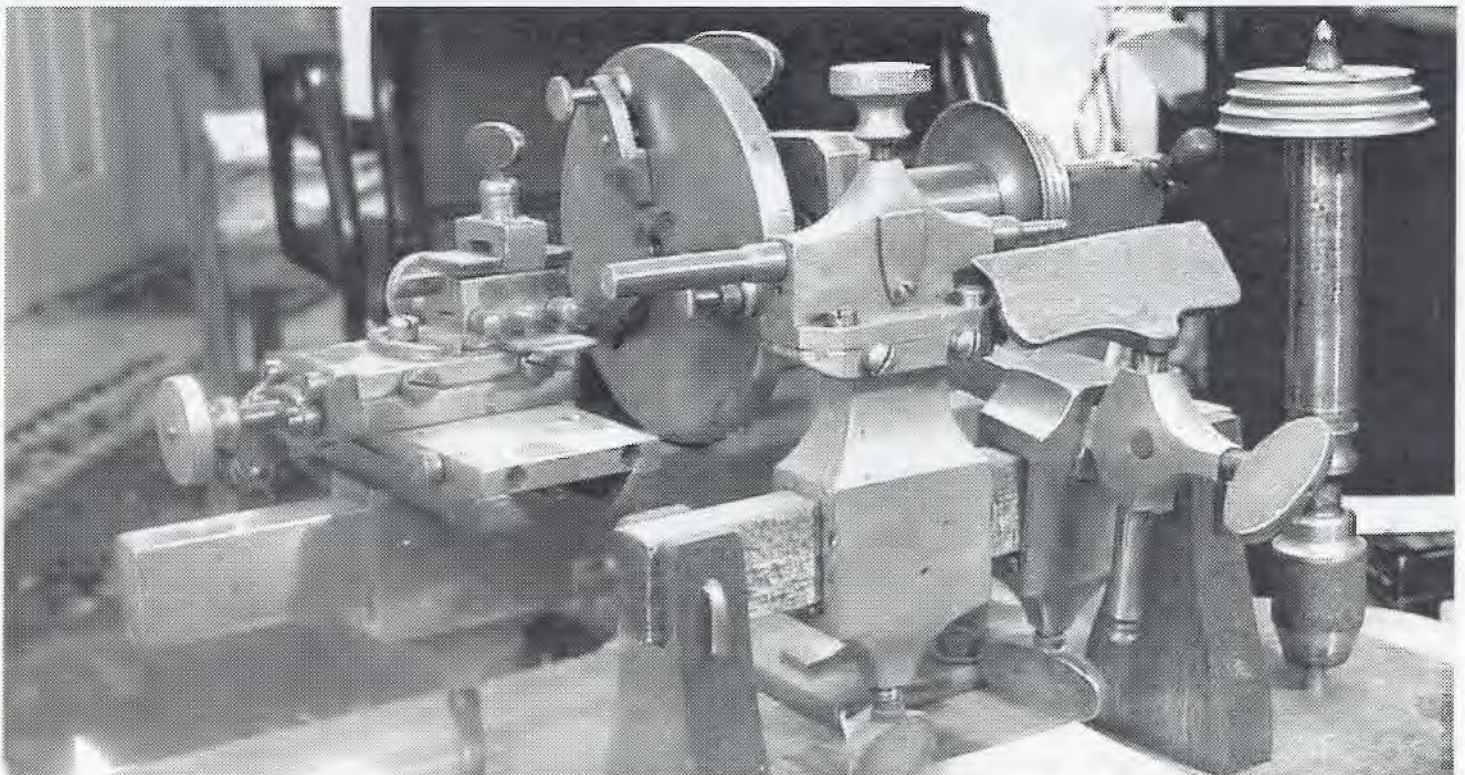


**Don Ross seeks info on this tool.  
Can you help?**



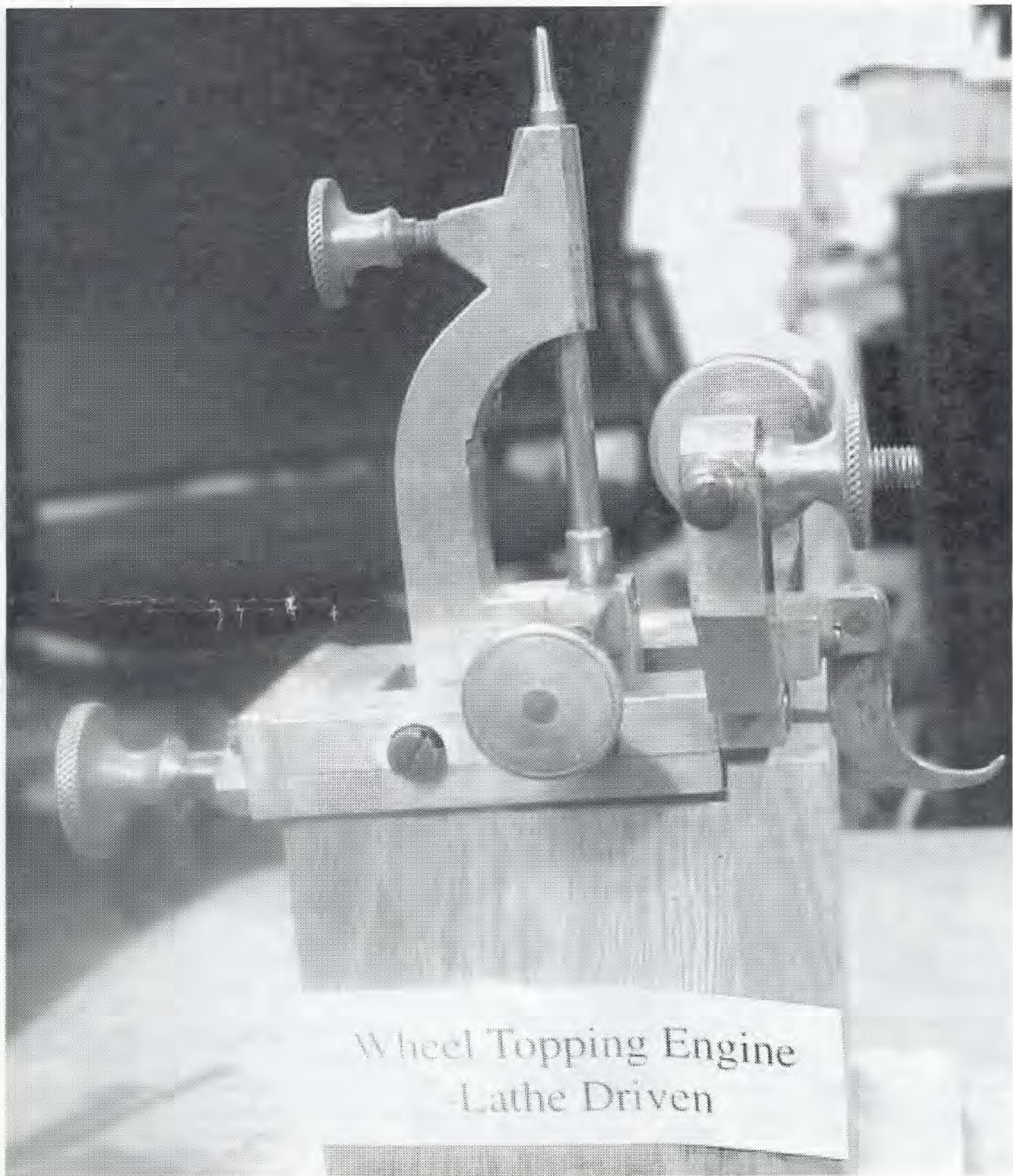


**Handwheel Operated Wheel Rounding-Up Tool**



**Swiss Mandrel-Handwheel or Footwheel Powered, Used in Jewelry**





**Wheel Topping Tool-Lathe Driven**



## Wanted:

Levin 3C instrument lathe, Aciera precision mill, Favorite jewelry tool and Portescap Gradoscope type GD #7. John Barrs, 3924 SW Holden St., Seattle, WA 98136.

Bench drill press, variable speed Rockwell or similar. John Bentz. Tel: 215-295-2132, e-mail: [jbentz@bellatlantic.net](mailto:jbentz@bellatlantic.net)

Metric 10mm "D" collets and other 10mm tooling plus name of shop to replace bearings in Levin grinding spindle. David Blocker, POB 75003, Dayton, OH 45475-0003.

Derbyshire Elect model lathe attachments — pivot polisher, screw cutting attachment, roller file rest, screw feed tailstock. Will trade. J. Dill, Box 5044, Greeley, CO 80634. Tel: 970-353-8561.

Antique clock and watch tools before 1900. Bruce Forman, 509 E. Mosser St., Apt. 18, Allentown, PA 18103. Tel: 610-770-1529.

Lower suspension block for Tiffany never wind clock. Ed Foxworthy, 526 Sussex Dr. SW, Huntsville, AL 35824-1306. Tel: 256-772-3393.

Swiss or German made machinery: gear cutting equipment, unusual knurls. Shop and lab measuring devices. Mark Fulmer, call collect 330-877-2021 or e-mail: [markusfu@hotmail.com](mailto:markusfu@hotmail.com)

Serial numbers and other details of unusual lathes, attachments and accessories made by Faneuil Watch Tool Co. or Rivett Lathe. Also Rivett "ideal" collets, .325 in. shank. Tom Hammond, 3258 Forest Gale Dr., Forest Grove, OR 97116. Tel: 503-359-1134, e-mail: [thamm10502@aol.com](mailto:thamm10502@aol.com)

Webster Whitcomb well equipped lathes & original lathe and tool catalogs with prices. Greg McCreight, 1336 Allentown Rd., Lima, OH 45805.

Watchmakers lathe accessories: cross slides, milling attachments, 3 & 4 jaw chucks, collets. Harvey Schmidt, 75-80 179th St., Flushing, NY 11366.

ManSon/Master lathes. They are small, black, gray or aluminum and of unusual shape. Were current in the '50s. Daniel Semel, 245 E. 80 St., New York, NY 10021-0515.

Pieces of wheel cutting engines for parts/restoration. Mel Smith, 2631 Amawalk Rd., Katonah, NY 10536.

8mm lathe collets: Levin half sizes, Levin wire collets over 70, Boley #1, Boley wire collets over 60, set of 5 Derbyshire clock wheel collets. Lyle A. Waisman, 3023 N. Clark St., #308, Chicago, IL 60657-5200. E-mail: [PktWatcher@aol.com](mailto:PktWatcher@aol.com)

## Offered:

Elgin horizontal milling machine, 5C spindle, 3-phase variable motor and cabinet, \$850. Mark Fulmer, 3044 Smith Kramer St., Hartsville, OH 44632.

Castings for making reproduction Rivett countershafts, \$40 to \$55. Other machining services. Tom Hammond, 3258 Forest Gale Drive, Forest Grove, OR 97116.

Rounding-up tool: see Crom's HST figures 1162 & 1163. 24 cutters in drawer, missing 5 brass wheel supports, \$750. Donald Ross, 3 Harrow Way, Middlebury, VT 05753. E-mail: [ccpsdon@hotmail.com](mailto:ccpsdon@hotmail.com)

Each current chapter member can place one "wanted" and one "offered" ad in each issue at no charge. Additional ads placed are \$25 per column inch per issue.

Send ad copy to:

**Horological Tools, NAWCC Chapter #173**  
c/o Harry Blair  
7 Hansom Ln.  
Marlboro, NJ 07746

*Include a SASE if reply is needed.*

## Answer to "What is it?"

A Curta Calculator, the smallest mechanical calculator ever produced. 140,000 Curta machines were produced from 1948 to 1972.

Source material for this issue:

Ted Crom books  
AHS Publication

## General Information:

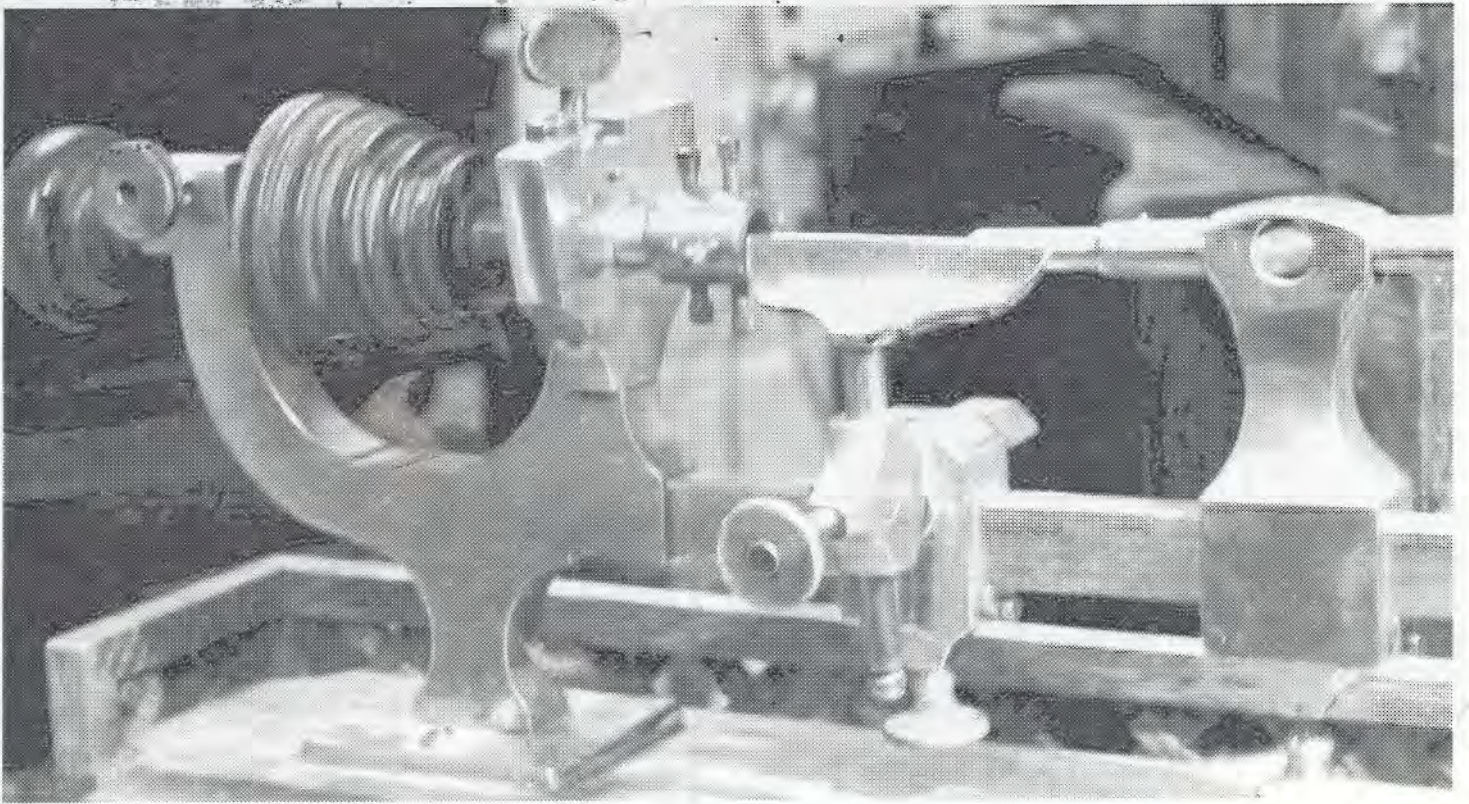
The Henry B. Fried Annual Memorial Horological Tour has been putting a growing emphasis on horological tools, factories and tool museums, and visited England, Scotland, Isle of Man, Ireland, and Norway in August 1999; Switzerland, Germany, and England in March 2000. For info on the September horological tour of the Orient, please call Nick Lerescu, tool chapter member and President of Advantage Tours, 1-800-262-4284.



- Unusual Brass Tools
- Chapter Activities
- Classified Ads

Mr. Ronald G. Bechler  
 726 Royal Glen Dr  
 San Jose, CA 95133  
 6/2002

Tool Enthusiasts' Round-Up  
 NAWCC Chapter '173 Newsletter  
 75-80 179th St.  
 Flushing, NY 11366



**Swiss Brass Lathe, 6mm Collets**