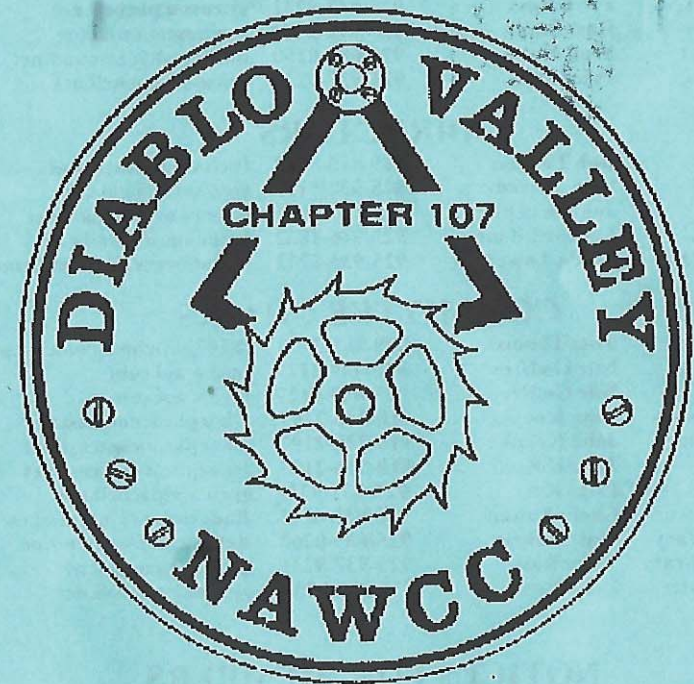


BULLETIN



October 2020
Volume 251

DIABLO VALLEY

Chapter 107

National Association of Watch and Clock Collectors

Chapter107.nawcc.org

email account chapter107nawcc@gmail.com

Chapter Established March 5, 1978

"Accent on Education"

2020 OFFICERS

President	Helen Wheeler	925-240-1691	wheelha@yahoo.com
Vice Pres.	Price Russ	925-937-9231	gpruss@pacbell.net
Secretary	Ross Smith	925-820-2180	mainuse@msn.com
Treasurer	Walt Hubrig	925-685-0260	dottiewalt@astound.net
Past Pres.	Price Russ	925-937-9231	gpruss@pacbell.net

DIRECTORS

2020	Bob Thomas	209-815-3292	btclock@comcast.net
2020	Stan Janczura	925-937-5139	sjanczura@aol.com
2020	John Koepke	510-236-2197	jskoepke@comcast.net
2020-2021	Leonard Boone	925-946-1832	lenboone@gmail.com
2020-2021	Linda Towers	925-935-6272	lindatowers@hotmail.com

COMMITTEE CHAIRS

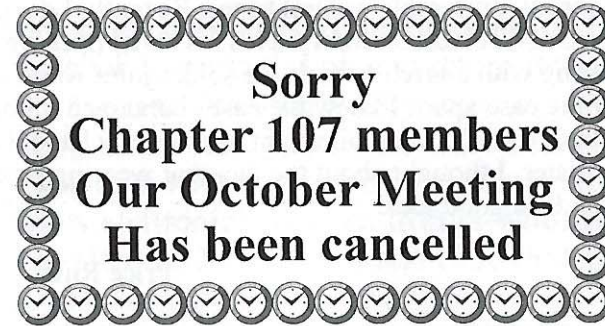
Editor	Tina Thomas	209-481-3930	ch107bulletin@comcast.net
Library	Nile Godfrey	925-449-2127	jng3@aol.com
Mart	Nile Godfrey	925-449-2127	jng3@aol.com
Membership	John Koepke	510-236-2197	jskoepke@comcast.net
Nominating	John Koepke	510-236-2197	jskoepke@comcast.net
Photo	John Koepke	510-236-2197	jskoepke@comcast.net
Program	Price Russ	925-937-9231	gpruss@pacbell.net
Refreshment	Linda Towers	925-935-6272	lindatowers@hotmail.com
Tool Library	Walt Hubrig	925-685-0260	dottiewalt@astound.net
Video Library	Price Russ	925-937-9231	gpruss@pacbell.net
Web Master	Price Russ	925-937-9231	gpruss@pacbell.net

NOTICES FOR MEMBERS

(The Bulletin accepts notices from Chapter members for all items/subjects horological - wanted, for sale, give-away, services, and so forth. There is no charge. All you have to do is supply copy to the editor.)

Wanted: Articles for the *Bulletin*. Contact Tina Thomas (209) 481-3930. Or email ch107bulletin@comcast.net.

Meeting Notice



Hello Friends,

I hope this message continues to find you all safe and well.

Again, because of the current Contra Costa County COVID Regulations, we will not be allowed to resume our Chapter meetings, and our October meeting has been canceled. I know we all want to wait until it is safe to do so, and agree with the current guidelines.

The Board has decided that since we have been unable to meet for the majority of this year, we are going to waive the membership renewal fee for current members for 2021. Thank you all for your current membership and we look forward to your continuing membership in 2021.

Helen Wheeler

Minor factoid

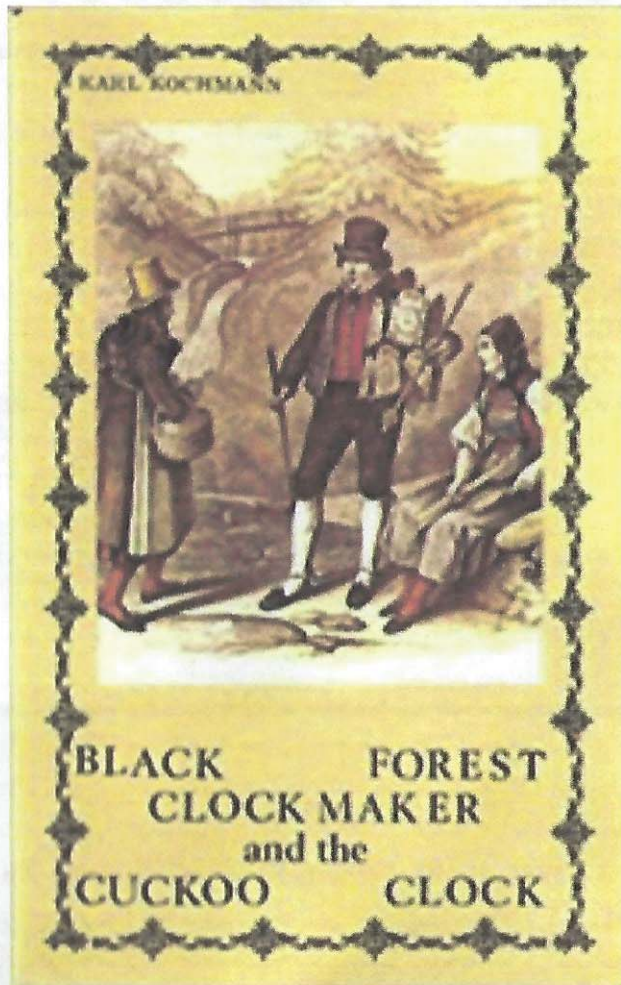
On May 31, 1859, Big Ben (the bell) began chiming. And has ever since.

Ross

Shop Hints

Think and repeat, preferably several times. Recently I decided to rebuild a batch of Telechron rotors. This involved opening each case by heating with a torch to melt the solder joint while pulling the parts of the case apart. I knew the cases contained oil but did not think about the effect hot oil might have on my hand. One large blister later, I thought about the fact that wearing protective gloves might be a good idea.

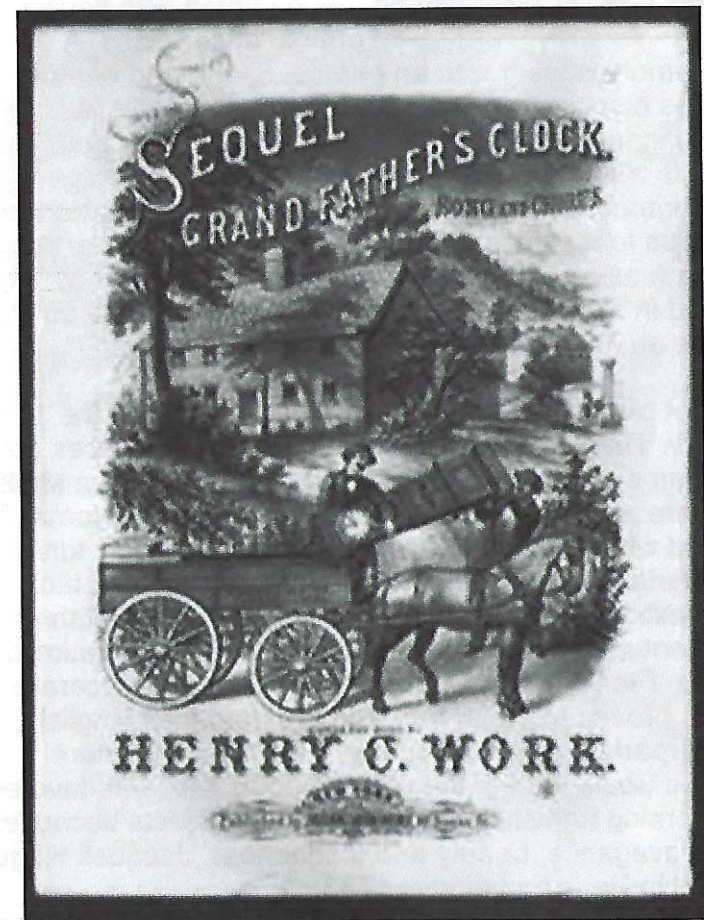
Price Russ

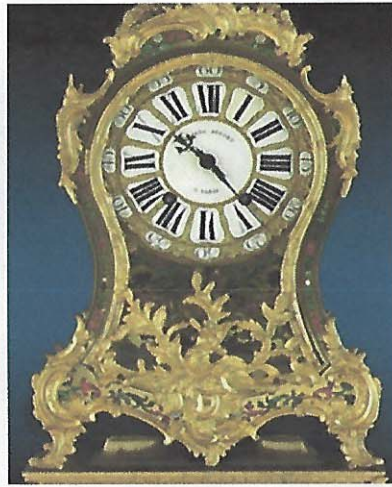


Shortt Report

The Shortt clock continues to run on my wall. Once things get back to normal, I plan to return it to Lick. As you may have read the observatory only narrowly escaped being destroyed by fire. The Chronicle had a good article on how the observatory was saved. See <https://www.sfchronicle.com/california-wildfires/article/A-miracle-How-132-year-old-Lick-15561656.php>

Price Russ





This outstanding Louis XV clock displays exquisite marquetry in the style of André-Charles Boulle, and features a movement crafted by Jacques Huguët, one of the premier clockmakers of the 18th century. The clock and its distinctive matching shelf are adorned with brass and ebony inlaid with stained-horn and mother-of-pearl, and mounted with flourishing ormolu decorations. A dial of

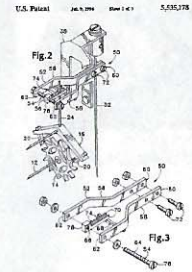
cast ormolu is inset with an enamel centre and enamel plaques displaying Roman and Arabic numerals, as blued steel hands keep time. The movement has twin going barrels with a verge escapement and silk suspended pendulum. Eighteenth-century clocks of this type are extremely rare, due to the delicate surface decoration. Similar models are featured in *French Clocks the World Over* by Tardy, and in *Encyclopédie de La Pendule Française du Moyen age au XXe Siècle*, by Pierre Kjellberg.

Bracket clocks were developed in last quarter of the 17th century. They are composed of two matching pieces created as an ensemble: a clock and a small decorative shelf. They are almost always made of wood and often ornamented with ormolu mounts, brass inlay, wood or tortoise shell veneer, or decorative varnish.. The production of these extraordinary clocks flourished during the 18th and 19th centuries in France due to royal and aristocratic patronage. French clocks, considered primarily a decorative object, proved to be far more ornate than their English counterparts. Boulle marquetry, introduced by André Charles Boulle during the reign of Louis XIV, was favored for adorning furnishings and decorative objects because of its extravagance, beauty and uniqueness. Jacques Huguët worked in Paris and died in 1733.

Wait. Don't Tell Me!

The illustration is from a 1996 patent. What device is described? Who is the inventor?

The Brocot escapement is well known to collectors of French clocks. Its invention is credited to various members of the Brocot family whose involvement in clock making spanned five generations. Because the escapement requires a large angle of swing, it is usually found in clocks with short pendulums, less than half second. The Brocots also invented a suspension named for them. What is it?



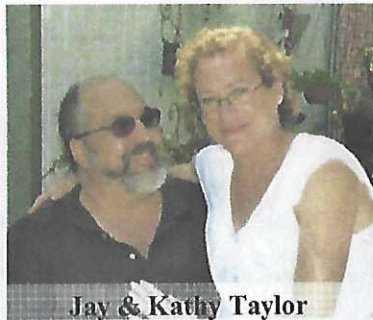
The 12 Rashi Valaya Yantras in Jaipur are similar to the Samrat Yantra discussed in the last issue except they are smaller and each has a unique orientation. What was their function?

Eli Terry spent his last years and in in Terryville, CT, which was named for him. (He died there in 1852.) In 1830 his son James branched out into an endeavor that made Terryville the heart of another industry. His company grew to employ more than 1800 workers and remained in business until the 1950s. What was the industry and name of the company?

The objects to the right look like winding keys but have male ends. One ends in a square. The other ends in a triangle. Their overall length is about 2 inches. What was their function?



Pictures Over The Years



Jay & Kathy Taylor

October 2009



Jack Shallow, Dean Thomas, & Dale Gardner

October 2010



October 2011



October 2012



October 2013



October 2014



October 2015



October 2016



October 2017



October 2018



October 2019

A gilt brass mounted white marble portico eight day French mantle clock. C1790

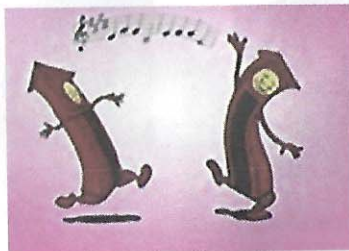


A decorative portico mantle clock of white marble with gilt brass mounts. White marble base with gilt brass mounts and gilt brass feet. Fluted columns to either side with gilt brass inlay on black marble bases with gilt brass decorative mounts. Central urn and two side urns all with gilt brass protruding floral decoration. The drum shaped clock has gilt brass swagged drapery.

The white enamel dial, 4 ½" diameter, with Roman chapters and Arabic minutes at each 15 minute marker. The hands are of gilt brass.

Circular plated eight day brass movement with twin barrels for time and strike, striking on a bell. Anchor escapement with sunburst pendulum on silk suspension.

Clock stands 22 ½" high.



CARTEL CLOCKS

The rococo style of interior decorating dominated during the period of Louis XV (1723-1774). This included clock cases. One type of case that developed in France was the Cartel or wall clock. The cases were made of either gilt cast metal or gilt wood. They can be identified by their decorations including flowers, figurines, foliage, and scrolls. These elaborately decorated cases were elongated to accommodate a half-second pendulum. Dials are enamel. The movements are spring driven 8-day verge escapements. The back is always unfinished. During this period highly carved and gilded panels were fashionable in French homes. The form of the Cartel clock blended nicely with the paneling. Britten notes that Cartel clocks "never found any favour in England".



One maker of Cartel clocks was Samuel du Pont who was also a watchmaker.



THE CLOCK OF LIFE

The clock of life is wound but once,
And no man has the power
To tell just when the hands will stop
At late or early hour.

...

To lose one's wealth is sad indeed,
To lose one's health is more,
To lose one's soul is such a loss
That no man can restore.

The present only is our own,
So Live, Love, toil with a will
Place no faith in "Tomorrow"
For the clock may then be still.

-----Robert H. Smith-----

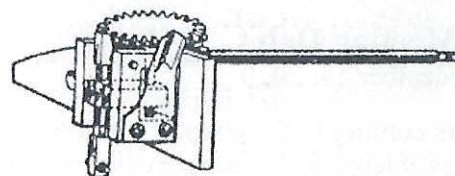
WCCWM
Exhibit Gallery
Photo



<https://www.wccwm.org/Exhibits.php>

OK, Now Tell Me.

The drawing is from patent #5,535,178 for an "adjustable suspension fork". It was issued on July 9, 1996 to Lubertus H. Hayenga.



The Brocot suspension allows one to regulate the movement from the front of the clock by turning a rod that moves chops up and down the suspension spring. The chops fit the spring closely and their location determines the effective length of the pendulum.

Ecliptic coordinates are based on the plane of the planets and the sun. Because Earth's axis is tilted with respect to the plane of the ecliptic, the ecliptic pole moves in an orbit around the celestial (equatorial) pole. An instrument intended for measurements in ecliptic coordinates needs to be adjustable. Jai Singh being a fan of large fixed instruments, decided to build a series of instruments each of which was aligned with the ecliptic pole for a brief period during the year. He picked 12 so that one could be used to take readings during the time when each of the constellations of the zodiac was beginning its course across the sky.

The industry James Terry founded was lockmaking. His company became the Eagle Lock and Screw Company. An example of a key for an Eagle lock is shown. While the company made both locks and screws, his contribution to the lock industry is the more recognized. Today there is a Lock Museum in Terryville.



Your editor has no idea how the two keys shown on the previous page were used. Any thoughts from readers would be appreciated.

CHAPTER #107 MEETINGS

Second Sunday of the Even Numbered Months

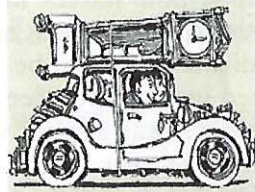
Mart: 10:30AM
 Chapter: 12:00PM
 Board: after the Chapter Meeting

Future Meeting Dates

December 13, 2020

We want to keep our members coming to the chapter meetings on a regular basis. If you have problems with transportation to and from meetings, let a director or officer know so we can help you find a carpool.

Only NAWCC members can participate (buy or sell) in our Mart. Be prepared to show your current 2020 membership card.



Other NAWCC Chapter Meetings in Northern California		
Chapter	Meeting Address	Meetings
De Anza #94	Odd Fellows Lodge 20589 Homestead Rd Cupertino, CA	2 nd Sunday even months (except April)
Sacramento #71	Sacramento Garden Center 3330 McKinley Blvd. Sacramento, CA	4 th Sunday odd months
San Francisco #5	Monroe Elementary School 3750 Monterey Blvd San Leandro, Ca	2nd Sunday odd months

DIRECTIONS TO CHAPTER MEETINGS

(except August and December)

743 Diablo Road, Danville

Take Interstate 680 to the Diablo Road exit in Danville. Go east on Diablo Road for 0.6 mile. The Grange Hall will be on your right. Parking is available in the front and rear. Enter from the front; *i.e.*, street side. Facing the building from the street, there is a ramp on the right side for handicap and cart access.

CHAPTER LIBRARIES

BOOK: The Chapter book library is located at Classical Clocks and Antiques, 1082 E. Stanley Blvd., Livermore. Contact Nile Godfrey (925-449-2127) for more information.

VIDEO: Chapters 107 and 5 share a DVD video library. Contact Price Russ (925-937-9231) for information.

TOOL: Contact Walt Hubrig (925-685-0260) or Price Russ (925-937-9231) for information on the tools and parts available for use by Chapter members.



Disclaimer

Statements of opinion and/or fact made by authors of papers or articles read before or appearing in the publications of the Chapter are to be accepted as the author's own. The Chapter assumes no responsibility for the accuracy or correctness of any statement of its contributors. This statement of responsibility shall appear in each issue of the Bulletin containing any of the foregoing.