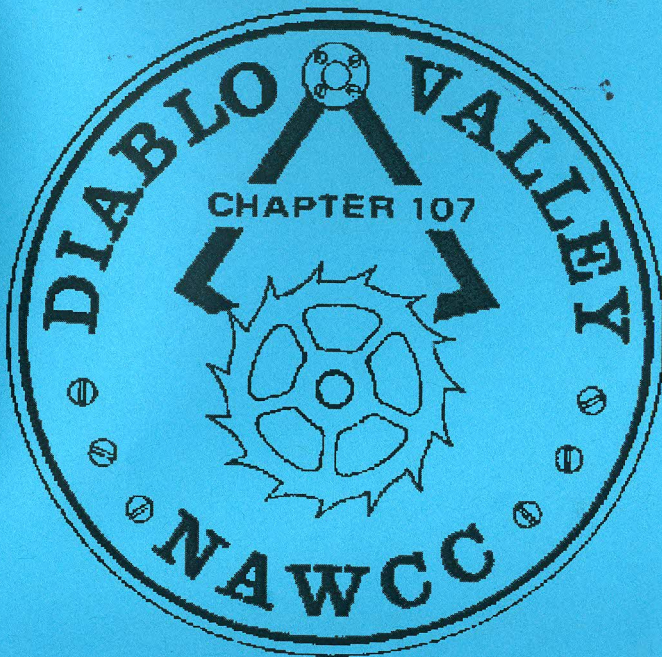


BULLETIN



August 2017
Volume 232

DIABLO VALLEY

Chapter 107

National Association of Watch and Clock Collectors

net.nawcc.org/chapter107

email account chapter107nawcc@gmail.com

Chapter Established March 5, 1978

"Accent on Education"

2017 OFFICERS

President	Linda Towers	925-935-6272	indatowers@hotmail.com
Vice Pres.	Price Russ	925-937-9231	gpruss@pacbell.net
Secretary	Ross Smith	925-820-2180	mainuse@msn.com
Treasurer	Walt Hubrig	925-685-0260	dottiewalt@astound.net
Past Pres.	Price Russ	925-937-9231	gpruss@pacbell.net

DIRECTORS

2017-2018	Ron Bechler	408-926-3212	ronbechler@comcast.net
2017-2018	Dean Thomas	925-455-0929	dno337@att.net
2017-2018	Bob Thomas	209-815-3292	btclock@comcast.net
2017	Stan Janczura	925-937-5139	sjanczura@aol.com
2017	John Koepke	510-236-2197	jskoepke@comcast.net

COMMITTEE CHAIRS

Editor	Tina Thomas	209-481-3930	ch107bulletin@comcast.net
Library	Nile Godfrey	925-449-2127	jng3@aol.com
Mart	Nile Godfrey and Bob Thomas		
Membership	John Koepke	510-236-2197	jskoepke@comcast.net
Nominating	OPEN		
Photo	John Koepke and Tina Thomas		
Program	Price Russ	925-937-9231	gpruss@pacbell.net
Refreshment	Linda Towers	925-935-6272	lindatowers@hotmail.com
Tool Library	Walt Hubrig	925-685-0260	dottiewalt@astound.net
Video Library	Price Russ	925-937-9231	gpruss@pacbell.net
Web Master	Price Russ	925-937-9231	gpruss@pacbell.net

NOTICES FOR MEMBERS

(The Bulletin accepts notices from Chapter members for all items/subjects horological - wanted, for sale, give-away, services, and so forth. There is no charge. All you have to do is supply copy to the editor.)

Wanted: Articles for the *Bulletin*. Contact Tina Thomas (209) 481-3930. Or email ch107bulletin@comcast.net.

Meeting Notice

Annual Picnic and White Elephant Auction

August 13th, 2017

Hosted by Chip Kumparak's mom Joan. Chip's mom has graciously welcomed Chapter 107 to come use her home in Livermore for this year's annual picnic. Joan has a pretty good sized clock collection and more than a few antique's to view inside.

1786 Lomas Ave. Livermore 94550

Meet 11:30 (No Mart), Feast 12:00
Auction after Lunch

DIRECTIONS TO THE PICNIC

On page 5

August 2017 Picnic Menu

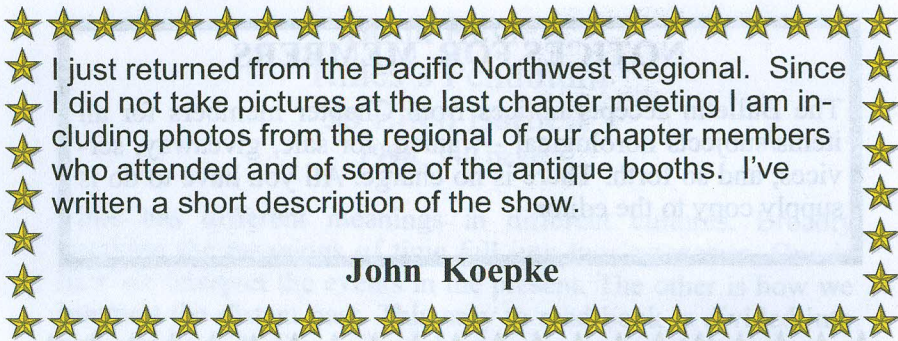
Please bring one of the following based on the first letter of your surname:



- A-F chips/dips/fruit
- G-Ko dessert
- Kp-Si green salad/vegetable
- Sj-Z beans/potato salad/pasta

As usual the chapter will provide meat, condiments, and drinks.

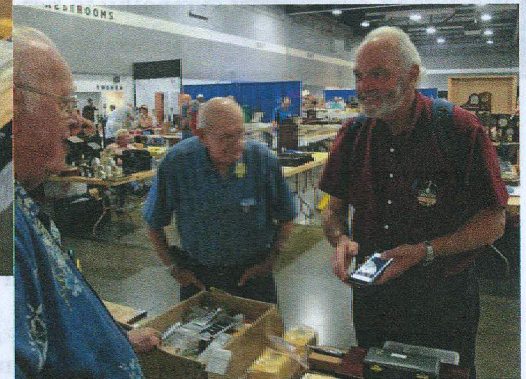
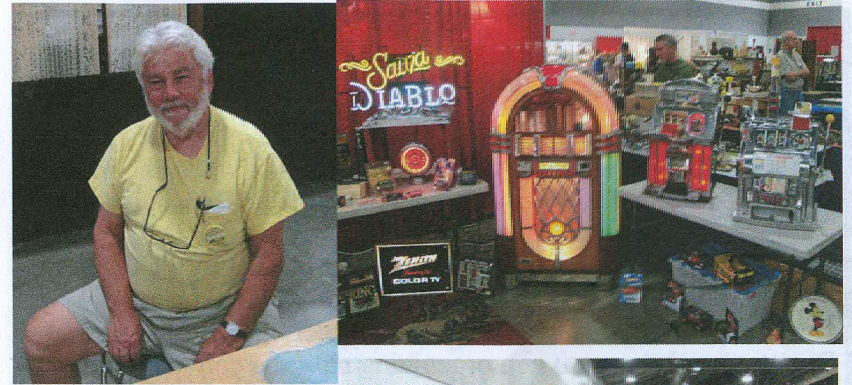
We will need a few folding chairs. Anyone who has some, please, bring them



I just returned from the Pacific Northwest Regional. Since I did not take pictures at the last chapter meeting I am including photos from the regional of our chapter members who attended and of some of the antique booths. I've written a short description of the show.

John Koepke

The Pacific Northwest Regional was recently held in Portland, Oregon. Several of Chapter 107 members attended and some had items for sell. The regional was held with the Palmer's Antique & Collectible Shows, advertised as America's largest. The show had 400 10 x 10 booths outside and 900 10 x 10 booths inside with 160 8 foot tables for the NAWCC. The 2 buildings for the show had 180,000 sq. feet of space. Attendance runs about 18,000 over the weekend. This was a trial run for the regional to expose more of the public to the NAWCC and try to interest the antique dealers to carry clocks and watches. The photos for the bulletin are from the show. Our members are included along with photos of the antique section of the show. I've not seen the final results from the regional, but I can say the number of vendors and the variety of items displayed was numbing.



IN MEMORIAM



NAWCC Star Fellow Nancy Ankrum passed away on May 1. Nancy joined Chapter 107 in 2011 when she moved to the Bay Area from Pennsylvania where she was active in NAWCC at the national level. At NAWCC, among other activities, she took minutes for meetings of the Board of

Directors and was active in organizing national conventions. She has been described as knowing everyone there. At 107 she will be remembered for providing insights to the workings of the NAWCC, her knowledge of American clocks, and her smile.

Nancy collected early mass produced clocks, preferably in original condition. Among her prize pieces were several wood works tall case clocks and clocks by Samuel Abbott, Brewster and Ingrahams, and Luther Smith among others. She also collected early American furniture and had a large library.

We extend our deepest sympathy to her family. She will be missed.

THE CLOCK OF LIFE

The clock of life is wound but once,
And no man has the power
To tell just when the hands will stop
At late or early hour.

...

To lose one's wealth is sad indeed,
To lose one's health is more,
To lose one's soul is such a loss
That no man can restore.

The present only is our own,
So Live, Love, toil with a will
Place no faith in "Tomorrow"
For the clock may then be still.

-----Robert H. Smith-----

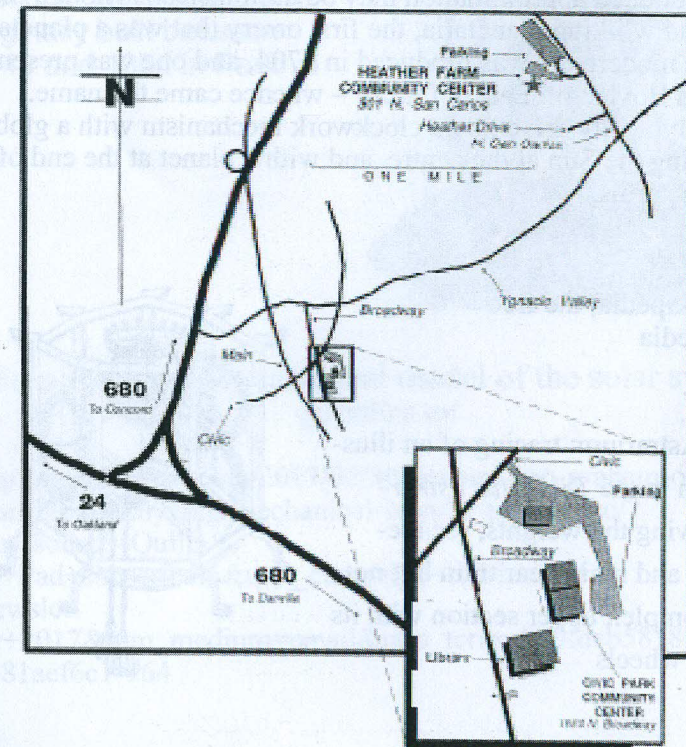
MOVIE NIGHT

The Watchmaker's Apprentice

The story of how Roger W. Smith came to be recognized as a watchmaker by George Daniels, the most famous watchmaker of the 20th century.

7:30 PM Wednesday September 13
Club Room, Heather Farm Park
301 N. San Carlos Dr.
Walnut Creek

This is the first of what hopefully will become occasional movie nights. The plan is to show horological videos that are interesting but not overly technical. You are encouraged to bring relatives and friends.



Orrery

From Wikipedia, the free encyclopedia

This article is about the mechanical device. For the British peerage, see Earl of Orrery.

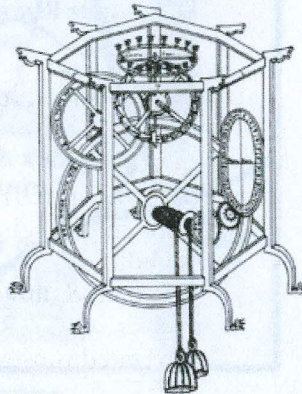
A small orrery showing earth and the inner planets



An **orrery** is a mechanical model of the solar system that illustrates or predicts the relative positions and motions of the planets and moons, usually according to the heliocentric model. It may also represent the relative sizes of these bodies; but since accurate scaling is often not practical due to the actual large ratio differences, a subdued approximation may be used instead. Though the Greeks had working planetaria, the first orrery that was a planetarium of the modern era was produced in 1704, and one was presented to Charles Boyle, 4th Earl of Orrery – whence came the name. They are typically driven by a clockwork mechanism with a globe representing the Sun at the centre, and with a planet at the end of each of the arms.

From Wikipedia, the free encyclopedia

The Astrarium: tracing of an illustration in the *Tractatus astrarii* showing the weights, escapement, and main gear train but not the complex upper section with its many wheels



Astrarium of Giovanni Dondi dell'Orologio

The **Astrarium of Giovanni Dondi dell'Orologio** was a complex astronomical clock built between 1348 and 1364 in Padova, Italy, by the doctor and clock-maker Giovanni Dondi dell'Orologio. The Astrarium had seven faces and 107 moving parts; it showed the positions of the sun, the moon and the five planets then known, as well as religious feast days. It was one of the first mechanical clocks to be built in Europe.

Carlo G Croce, reconstruction of Dondi's Astrarium, originally built between 1348 and 1364 in Padova



To see more on mechanical model of the solar system go online to:

http://quillandpad.com/2017/07/30/graham-geo-graham-orrery-tourbillon-analyzing-mechanical-wonder-plus-video/?utm_source=Quill+%26+Pad+subscribers&utm_campaign=b381aef6c1-Newsletter+2017&utm_medium=email&utm_term=0_0fdcb5818f-b381aef6c1-164

CHAPTER #107 MEETINGS

Second Sunday of the Even Numbered Months

Mart: 10:30AM
 Chapter: 12:00PM
 Board: after the Chapter Meeting

Future Meeting Dates

October 8th, 2017

December 10th, 2017

We want to keep our members coming to the chapter meetings on a regular basis. If you have problems with transportation to and from meetings, let a director or officer know so we can help you find a carpool.

Only NAWCC members can participate (buy or sell) in our Mart. Be prepared to show your current 2017 membership card.

Other NAWCC Chapter Meetings in Northern California		
Chapter	Meeting Address	Meetings
De Anza #94	Odd Fellows Lodge 20589 Homestead Rd Cupertino, CA	2 nd Sunday even months (except April)
Monterey Bay #70	Live Oak Grange Hall 1900 17th Ave Santa Cruz, CA	3 rd Sunday odd months
Sacramento #71	Sacramento Garden Center 3330 McKinley Blvd. Sacramento, CA	4 th Sunday odd months
San Francisco #5	Boys and Girls Club 401 Marina Blvd. San Leandro, CA	2 nd Sunday odd months

DIRECTIONS TO CHAPTER MEETINGS

(except August and December)

743 Diablo Road, Danville

Take Interstate 680 to the Diablo Road exit in Danville. Go east on Diablo Road for 0.6 mile. The Grange Hall will be on your right. Parking is available in the front and rear. Enter from the front; *i.e.*, street side. Facing the building from the street, there is a ramp on the right side for handicap and cart access.

CHAPTER LIBRARIES

BOOK: The Chapter book library is located at Classical Clocks and Antiques, 1082 E. Stanley Blvd., Livermore. Contact Nile Godfrey (925-449-2127) for more information.

VIDEO: Chapters 107 and 5 share a DVD video library. Contact Price Russ (925-937-9231) for information.

TOOL: Contact Walt Hubrig (925-685-0260) or Price Russ (925-937-9231) for information on the tools and parts available for use by Chapter members.

