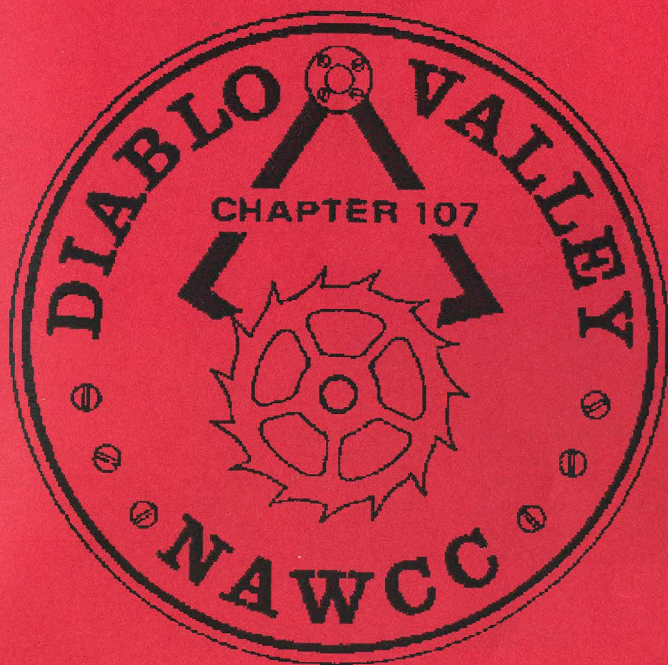


# BULLETIN



**December 2016**  
**Volume 228**

## DIABLO VALLEY

### Chapter 107

National Association of Watch and Clock Collectors

[www.community.nawcc.org/chapter107](http://www.community.nawcc.org/chapter107)

email account [chapter107nawcc@gmail.com](mailto:chapter107nawcc@gmail.com)

Chapter Established March 5, 1978

### "Accent on Education"

#### 2016 OFFICERS

President	Price Russ	925-937-9231	<a href="mailto:gpruss@pacbell.net">gpruss@pacbell.net</a>
Vice Pres.	Bob Thomas	209-815-3292	<a href="mailto:btclock@comcast.net">btclock@comcast.net</a>
Secretary	Ross Smith	925-820-2180	<a href="mailto:mainuse@msn.com">mainuse@msn.com</a>
Treasurer	Walt Hubrig	925-685-0260	<a href="mailto:dottiewalt@astound.net">dottiewalt@astound.net</a>
Past Pres.	John Koepke	510-236-2197	<a href="mailto:jskoepke@comcast.net">jskoepke@comcast.net</a>

#### DIRECTORS

2016-2017	Ron Bechler	408-926-3212	<a href="mailto:ronbechler@comcast.net">ronbechler@comcast.net</a>
2016-2017	Dean Thomas	925-455-0929	<a href="mailto:dno337@att.net">dno337@att.net</a>
2016-2017	Linda Towers	925-935-6272	<a href="mailto:lindatowers@hotmail.com">lindatowers@hotmail.com</a>
2016	Stan Janczura	925-937-5139	<a href="mailto:sjanczura@aol.com">sjanczura@aol.com</a>
2016	Celeste Graham	925-676-7525	<a href="mailto:cqgraham@yahoo.com">cqgraham@yahoo.com</a>

#### COMMITTEE CHAIRS

Editor	Tina Thomas	209-481-3930	<a href="mailto:ch107bulletin@comcast.net">ch107bulletin@comcast.net</a>
Library	Nile Godfrey	925-449-2127	<a href="mailto:jng3@aol.com">jng3@aol.com</a>
Mart	Nile Godfrey and Bob Thomas		
Membership	John Koepke	510-236-2197	<a href="mailto:jskoepke@comcast.net">jskoepke@comcast.net</a>
Nominating	OPEN		
Photo	John Koepke and Tina Thomas		
Program	Ed Ferguson	925-337-9857	<a href="mailto:ferguson.ed@comcast.net">ferguson.ed@comcast.net</a>
Refreshment	Linda Towers	925-935-6272	<a href="mailto:lindatowers@hotmail.com">lindatowers@hotmail.com</a>
Tool Library	Walt Hubrig	925-685-0260	<a href="mailto:dottiewalt@astound.net">dottiewalt@astound.net</a>
Video Library	Price Russ	925-937-9231	<a href="mailto:gpruss@pacbell.net">gpruss@pacbell.net</a>
Web Master	Price Russ	925-937-9231	<a href="mailto:gpruss@pacbell.net">gpruss@pacbell.net</a>

#### NOTICES FOR MEMBERS

(The Bulletin accepts notices from Chapter members for all items/subjects horological - wanted, for sale, give-away, services, and so forth. There is no charge. All you have to do is supply copy to the editor.)

**Wanted:** Articles for the *Bulletin*. Contact Tina Thomas (209) 481-3930. Or email [ch107bulletin@comcast.net](mailto:ch107bulletin@comcast.net).

## THE ANNUAL HOLIDAY LUNCHEON CELEBRATION

N.A.W.C.C. Diablo Valley

Chapter #107 December Meeting

### BACK FORTY ROADHOUSE & SALOON

100 Coggins Drive, Pleasant Hill, Ca. 925-935-1440

Sunday December 11, 2016, 11:00 AM to 3:00 PM

Please bring and wear your badges

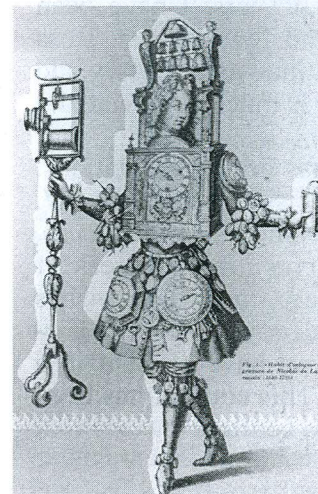
#### Program:

Election of 2015 Officers and Directors:

#### Auction of Quality Pieces:

*Bring your serious Clocks and Watches, Related Timepieces, and Supplies of High Quality. You keep all the money.*

*Nothing for the Chapter. This is your big Chance of the year. Look over Your Collection and make Someone Happy. BRING THEM ALONG!*



## President's Message

As we approach the end of the year, it is a good time to reflect back and look forward. This has certainly been an interesting year on many levels. In spite of the loss of two long term members, it has been a good year for Chapter 107. We have had interesting programs. The membership has held steady. We have raised money from the White Elephant sale and donations to the chapter. We have an excellent Bulletin. I could go on and on. This has been made possible by the dedication of our officers and board. Thank you. I particularly want to thank Tina Thomas for continuing to produce the Bulletin. Hers is a demanding task, and she does it well. For my part, I have enjoyed working with the group, arranging programs, and coordinating the project to restore the Shortt clock at the Lick Observatory. In that connection, thanks go to D. H. Mayeron and John Koepke. DH brought the clock to the chapter's attention and arranged the field trip to Lick. John has been doing research on the history of timekeeping at Lick.

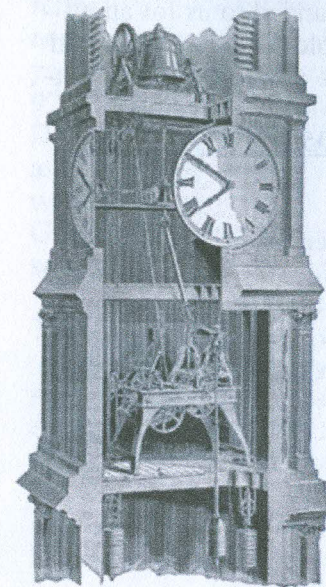
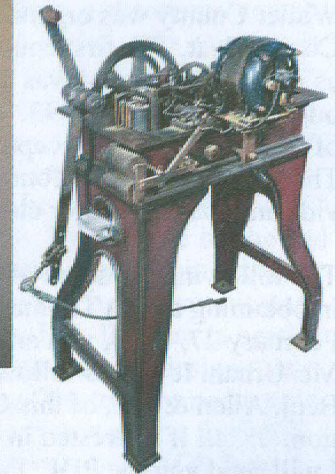
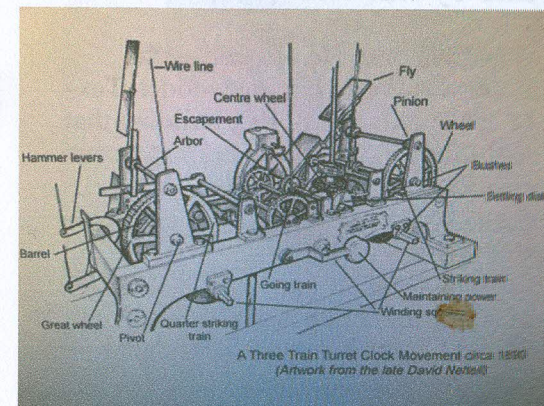
Looking forward, I am pleased (ecstatic) that Linda Towers has agreed to run for President. It is essential for the organization to have different people take on this role. I have decided to run for Vice President. According to our by-laws, the VP is responsible for arranging speakers. For the last several years, I have been usurping this role, so I might as well stand for the post. Ross Smith and Walt Hubrig have agreed to continue as Secretary and Treasurer. Their commitment to the chapter is much appreciated.

One of the main strengths of this chapter has been presentations. Ideas for 2017 include presentations on precisions regulators, W. D. Clement and his lathes, case repair, and something on watches. As of now, these are just ideas. No one has committed to speak. If you have ideas for speakers or topics, please, make your wishes known. This includes volunteering to speak on your favorite horological topic. For the last several years, we have brought in a speaker from out of town for one meeting. This concept has been well received, and if elected as VP, I hope to continue it.

Happy Holidays and New Year.

*Price*

## The Turret Clock Keeper's Handbook A Practical Guide for those who Look after a Turret Clock by Chris McKay



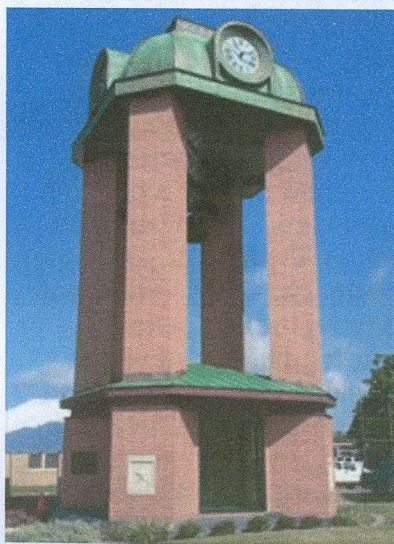
A **turret clock** or a public clock is a clock that is larger than a domestic clock and has a mechanism designed to drive a visual time indicator such as dials and or bells as a public amenity. Turret clocks specifically had mechanisms mounted high in a building often a purpose built tower such as churches, town halls, and other public buildings. Clocks were not referred to as turret clocks by clockmakers until recent times, often old clocks were recognized as turret clocks by their location.

If interested in reading The Turret Clock Keeper's Handbook email me and I will send you the PDF, I can get a printed copy to you at the next meeting or you can download it from the NAWCC web site <http://www.nawcc-index.net/Articles/tckh.pdf>

## Waller County Courthouse TOWER CLOCK Hempstead, Texas by Jim West (TX)

Waller County was organized in 1873 with Hempstead as the County Seat. The first courthouse was housed in the wooden Texas Hotel. The second was a 44' x 60', two-story brick building that burned in March of 1893. The third courthouse was built at a cost of \$30,000 and was accepted on June 14, 1893 (Figure 1, above). The Commissioner's Court granted M. S. Urban a contract to provide and install a tower clock in the new courthouse tower.

The following are some of the correspondence that was involved in obtaining a Seth Thomas Tower Clock: The first letter dated February 27, 1894, was answered by Seth Thomas of Chicago to Mr. Urban. It was as follows: Dear Sir: Your favor of the 22nd, to Benj. Allen & Co., of this City, has been handed to us for attention. .... If interested in reading the whole story email me and I will send you the PDF, I can get a copy to you at the next meeting or down load it from the NAWCC web site below [http://nawcc.org/images/stories/2000/articles/2005/359/359\\_726.pdf](http://nawcc.org/images/stories/2000/articles/2005/359/359_726.pdf)



**Quick Description:** The clock tower provides a permanent home for the 1894 bell and clock which were functional adornments to the old Waller County Texas Courthouse.

For more information check out <http://www.waymarking.com/waymarks/>

WMEXYC\_The\_Old\_Waller\_County\_Courthouse\_Clock\_and\_Bell\_Hempstead\_TX

## The Dipleidoscope



Edward John Dent, a chronometer and clockmaker in London, was working in the 1830s on a simple contrivance that would allow the public to set clocks correctly based on the transit of the sun (more complex and expensive transit telescopes had been developed by Ole Rømer in 1690). By 1840 he felt he had come to a suitable design using shadows, however when he communicated his ideas to Mr. J.M. Bloxam (a barrister),

he found he had also been working on his own design using reflections, which Dent felt was superior. The two formed a partnership and worked together on the device, and after a further 2 years work they finalized the design and patented it (GB Patent 9793 of 1843), with Mr. Dent manufacturing and selling it as Dent's Dipleidoscope. The instrument could use the moon as well as the sun and when correctly calibrated and aligned the accuracy was said to be less than a second. Dent exhibited the device at the Great Exhibition of 1851. After Edward Dent died in 1853, his son Frederick William Dent took over manufacture.

The significance of this device relates in part to the development of the railways, when an absolute knowledge of the time became more important, whereas previously it was often sufficient that an entire rural community would use the parish clock, and this would periodically be set by 'the announcement of the guard of the mail coach' or similar. The instrument came with a detailed instruction booklet, which had a substantial section on correcting local time to Greenwich Mean time (as used by the railways).

**Dipleidoscope Edward Edward John Dent & Co.**

More at <http://prints.rmg.co.uk/artist/27806/edward-edward-john-dent-co#5JTICtz3j81tkZPj.99>

# October 2016 Meeting





**Victorian Brass Dipleidoscope  
by Dent  
(1800 to 1900 England)**

The dipleidoscope was an optical instrument patented in 1843 by James Bloxham and made by EJ & F Dent of London for determining the meridian transit of a celestial object from the coincidence of two images formed by reflection in a hollow triangular prism. Dent was well known as a clock and chronometer maker and the firm was active from 1790 to 1853. The mirror cell of the instrument contains a hollow right-angled prism with two sides silvered and one of glass. The meridian transit was determined by the coincidence of two images of the sun by single and double reflection, one from the top glass and the other from both mirrors. With the base properly levelled and oriented, the meridian transit could be read in seconds. These instruments were important for checking the accuracy of chronometers. Size: 7.5cm high, 9.5cm wide, 6.5cm deep – 3 ins high, 3¾ ins wide, 2½ ins deep



### Additions to the Library

Video of John Koepke's presentation: *Time Service and the Clocks of the Lick Observatory*

Don Rossi donated the following books:

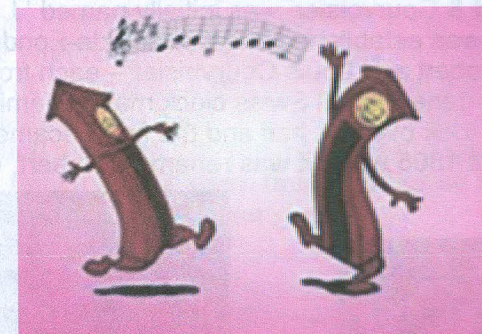
*The Development of Time Measurement: From 1000 Seconds to 1000<sup>th</sup> of a Second a Day* prepared by the Worshipful Company of Clockmakers (1951)

*Unique Exhibition of Antique Watches and Clocks of the 16<sup>th</sup> - 19<sup>th</sup> Centuries* loaned by Tyme, Ltd. (1938)

*Romance and History of Time*, Roy Rutherford Bailey (1922)  
*The Mitchell Inn Clock Collection* (1939)

*The Borghesi Astronomical Clock*, Silvio A. Bedini (1964)

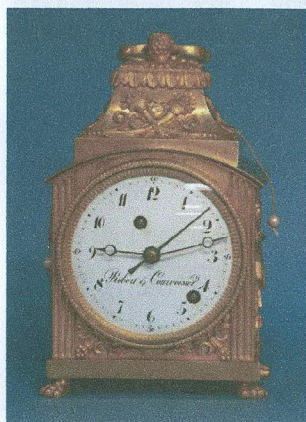
*Modern Shop Methods Lesson 35: Problems and Solutions*, Chicago School of Watchmaking (1949)



### Disclaimer

Statements of opinion and/or fact made by authors of papers or articles read before or appearing in the publications of the Chapter are to be accepted as the author's own. The Chapter assumes no responsibility for the accuracy or correctness of any statement of its contributors. This statement of responsibility shall appear in each issue of the Bulletin containing any of the foregoing.

### 1795 Swiss Ormolu Pendule d'Officier Clock.

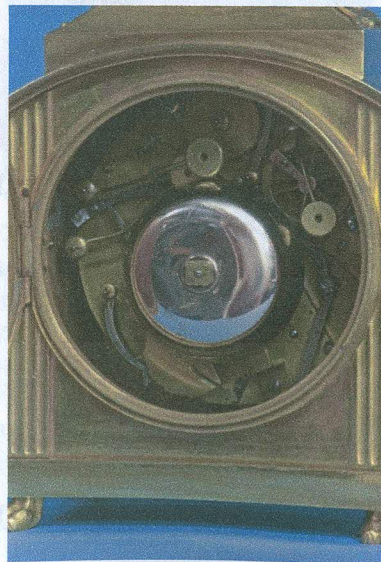


Robert & Courvoisier

The well-cast and finished matt and bur-nished ormolu case has numerous decora-tive mounts that include pilasters to the corners, horns of plenty, musical trophies and paw feet. The white porcelain dial has black Arabic numbers for the hours, Arabic 15-minute marks, asymmetrical winding arbors, Breguet-style minute and hour hands, a steel alarm hand and is elabo-rately signed, 'Robert & Courvoisier'. The one-day movement is typically Swiss with the strike-work and balance wheel planted on the back plate. It strikes grand-sonnerie on stacked bells, has the strike control lever out the base and a repeat cord out the side. The pull alarm is wound by a cord out the top, is set at the dial and strikes on a bell. The brass balance wheel has steel endcaps and is regulated by a squared arbor that carries a steel hand against an engraved scale.

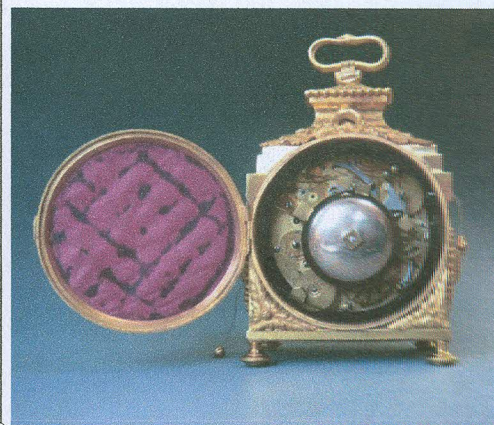
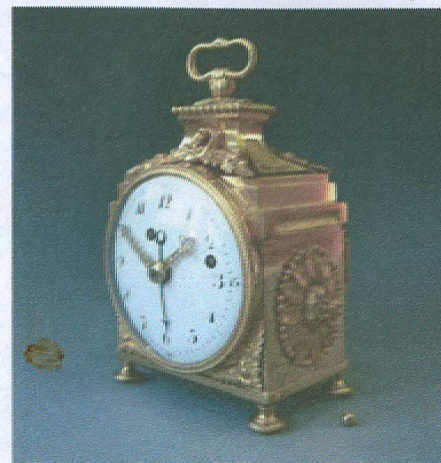
The firm 'Robert & Courvoisier' was initially named 'J. Robert et Fils et Cie' and was established in La Chaux-de-Fonds, Switzer-land by Louis Robert and Louis Courvoisier – each from very prominent multi-generational Swiss clock making families. In 1787 Robert's widow took over his half and the firm became 'Robert & Courvoisier' until 1805 when it was renamed 'Robert, Courvoisier et Cie'.

The firm 'Robert & Courvoisier' was initially named 'J. Robert et Fils et Cie' and was established in La Chaux-de-Fonds, Switzer-land by Louis Robert and Louis Courvoisier – each from very prominent multi-generational Swiss clock making families. In 1787 Robert's widow took over his half and the firm became 'Robert & Courvoisier' until 1805 when it was renamed 'Robert, Courvoisier et Cie'.



A Louis XVI pendule d'officier, a Swiss travelling clock made around 1780-90.

The fire gilt brass case is of classic design with or-naments to the sides, the front and the top. Sur-mounded by an 'ourobouros' carrying handle. A snake eating its own tail, symbolizes the circular nature, the eternal return or cyclicity. It has an enamel dial with an Arabic chapter ring, which is protected by a door with a convex glass. The time is indi-cated by two pierced gilt brass hands on the enamel dial, which has Arabic hour, Arabic quarter, five-minute and mi-nute divisions. Two day going work with verge escapement and balance with balance spring and regulation. Striking mechanism of striking on a bell the hours and half hour. Pull-quarter striking on two bells. The movement is constructed between round plates and driven by springs in spring barrels. Also alarm function. The alarm time is indicated by a blued steel central hand on the chapter ring.



HxWxD 19x13x10  
cm

## CHAPTER #107 MEETINGS

### Second Sunday of the Even Numbered Months

Mart: 10:30AM  
 Chapter: 12:00PM  
 Board: after the Chapter Meeting

### Future Meeting Dates

February 12, 2017

We want to keep our members coming to the chapter meetings on a regular basis. If you have problems with transportation to and from meetings, let a director or officer know so we can help you find a carpool.

**Only NAWCC members can participate (buy or sell) in our Mart. Be prepared to show your current membership card.**

#### Other NAWCC Chapter Meetings in Northern California

Chapter	Meeting Address	Meetings
De Anza #94	Odd Fellows Lodge 20589 Homestead Rd Cupertino, CA	2 <sup>nd</sup> Sunday even months (except April)
Monterey Bay #70	Live Oak Grange Hall 1900 17th Ave Santa Cruz, CA	3 <sup>rd</sup> Sunday odd months
Sacramento #71	Sacramento Garden Center 3330 McKinley Blvd. Sacramento, CA	4 <sup>th</sup> Sunday odd months
San Francisco #5	Boys and Girls Club 401 Marina Blvd. San Leandro, CA	2 <sup>nd</sup> Sunday odd months

## DIRECTIONS TO CHAPTER MEETINGS

(except August and December)

### 743 Diablo Road, Danville

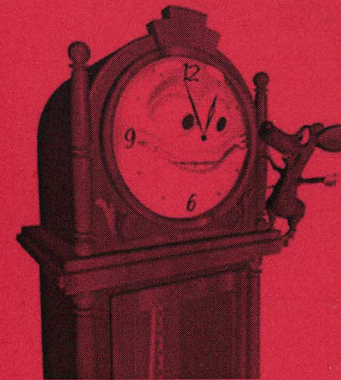
Take Interstate 680 to the Diablo Road exit in Danville. Go east on Diablo Road for 0.6 mile. The Grange Hall will be on your right. Parking is available in the front and rear. Enter from the front; *i.e.*, street side. Facing the building from the street, there is a ramp on the right side for handicap and cart access.

## CHAPTER LIBRARIES

**BOOK:** The Chapter book library is located at Classical Clocks and Antiques, 1082 E. Stanley Blvd., Livermore. Contact Nile Godfrey (925-449-2127) for more information.

**VIDEO:** Chapters 107 and 5 share a DVD video library. Contact Price Russ (925-937-9231) for information.

**TOOL:** Contact Walt Hubrig (925-685-0260) or Price Russ (925-937-9231) for information on the tools and parts available for use by Chapter members.



## TIME TO GO!

