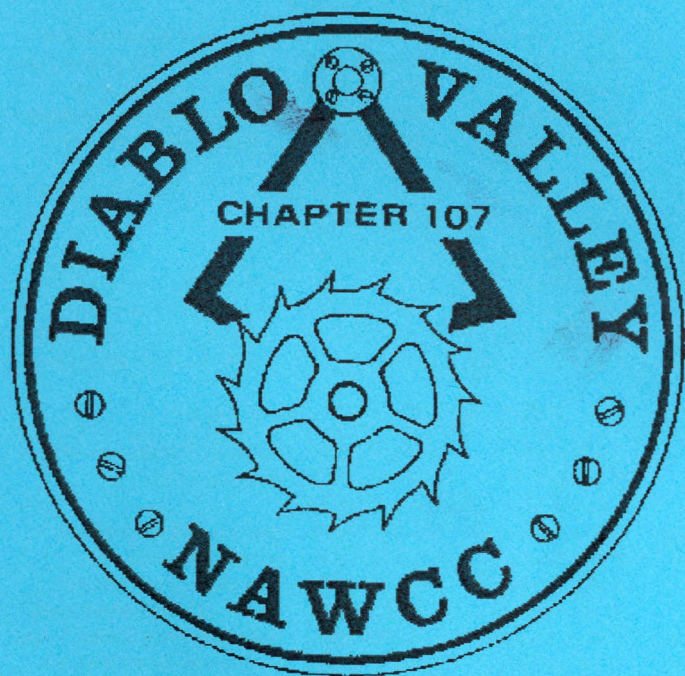


BULLETIN



August 2014
Volume 214

DIABLO VALLEY

Chapter 107

National Association of Watch and Clock Collectors

<http://community.nawcc.org/chapter107>

email account chapter107nawcc@gmail.com

Chapter Established March 5, 1978

"Accent on Education"

OFFICERS

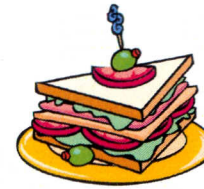
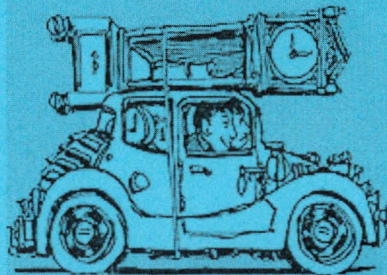
President	John Koepke	510-236-2197	jskoepke@comcast.net
Vice Pres.	Bob Wahrer	925-462-4912	bob_wahrer@yahoo.com
Secretary	Ross Smith	925-820-2180	mainuse@msn.com
Treasurer	Walt Hubrig	925-685-0260	dottiewalt@astound.net
Past Pres.	Price Russ	925-937-9231	gpruss@pacbell.net

DIRECTORS

2014-2015	Jack Coulter	925-284-1031	
2014-2015	Bob Thomas	209-815-3292	btclock@comcast.net
2014-2015	Chip Kumparak	408-778-2538	chips@garlic.com
2014	Roy Holman	510-530-5428	royholman@gmail.com
2014	Celeste Graham	925-676-7525	cggraham@yahoo.com

COMMITTEE CHAIRS

Editor	Tina Thomas	209-481-3930	justfourkicks@comcast.net
Library	Nile Godfrey	925-449-2127	jng3@aol.com
Mart	Nile Godfrey and Jerry Konicek		
Membership	Jerry Konicek	510-783-6451	jakonicek@pacbell.net
Nominating	Price Russ	925-937-9231	gpruss@pacbell.net
Photo	Jerry Konicek	510-783-6451	jakonicek@pacbell.net
Program	Bob Wahrer	925-462-4912	bob_wahrer@yahoo.com
Refreshment	Linda Towers	925-935-6272	lindatowers@hotmail.com
Tool Library	Walt Hubrig	925-685-0260	dottiewalt@astound.net
Video Library	Price Russ	925-937-9231	gpruss@pacbell.net
Web Master	Price Russ	925-937-9231	gpruss@pacbell.net



Annual Picnic and White Elephant Auction August 10, 2014

Hosted by Price & Bernice Russ

Meet 11:30 (No Mart), Feast 12:00
Auction after Lunch

DIRECTIONS TO THE PICNIC

On page 5

August 2014 Picnic Menu

Please bring one of the following based on the first letter of your surname:

A-E	green salad/vegetable
F-Koe	beans/pasta/potato salad
Kon-R	chips/dips/fruit
S-Z	dessert



White Elephant Auction

This is your opportunity to get rid of your horological excess and acquire lots of new treasures. No item is too humble for this grand affair. Contribute to the fun by participating. All funds go to support the chapter.



President's Message

If you did not attend our June meeting you missed a terrific program and display of American alarm clocks put on by **Vince Angell**. The chapter is planning a house tour of his fine collection of American clocks in the near future. Thank you **Vince!**

Our August 10th meeting is our Annual Picnic and White Elephant Auction to be held at **Price Russ's** home in Walnut Creek. **Price** has a beautiful back yard for hosting the picnic and a lot of wonderful Horological treasures on display in his home. The weather should be very nice as well. Please check this issue of the Bulletin for directions to his house and a list of Menu items for members to bring to the picnic. We need folks to bring folding chairs if you have them. Please bring your excess of Horological items to dispose of and plan to find new treasures at our auction. All funds go to support the chapter from our White Elephant Auction.

For our October 12th meeting **Price Russ** has arranged for **Julie Mueller** to give a talk on Character Watches. She is also planning to bring a display as well. I would like to remind our members that any Horological items are always welcome for display. Finally, our December 14th meeting will be our Annual Holiday luncheon and Auction to be held at the Back Forty Restaurant. Members who bring items for this auction receive all the proceeds from the sale.

I would like to give a big thank you to all the officers, directors, committee chairs and members who work so hard to make our chapter work so well. Please talk to any of the officers or directors if you have any ideas or suggestions to improve our chapter. It's not too soon to start thinking about officers for next year. If you have any ideas please get in touch with the head of the Nominating Committee, **Price Russ**.

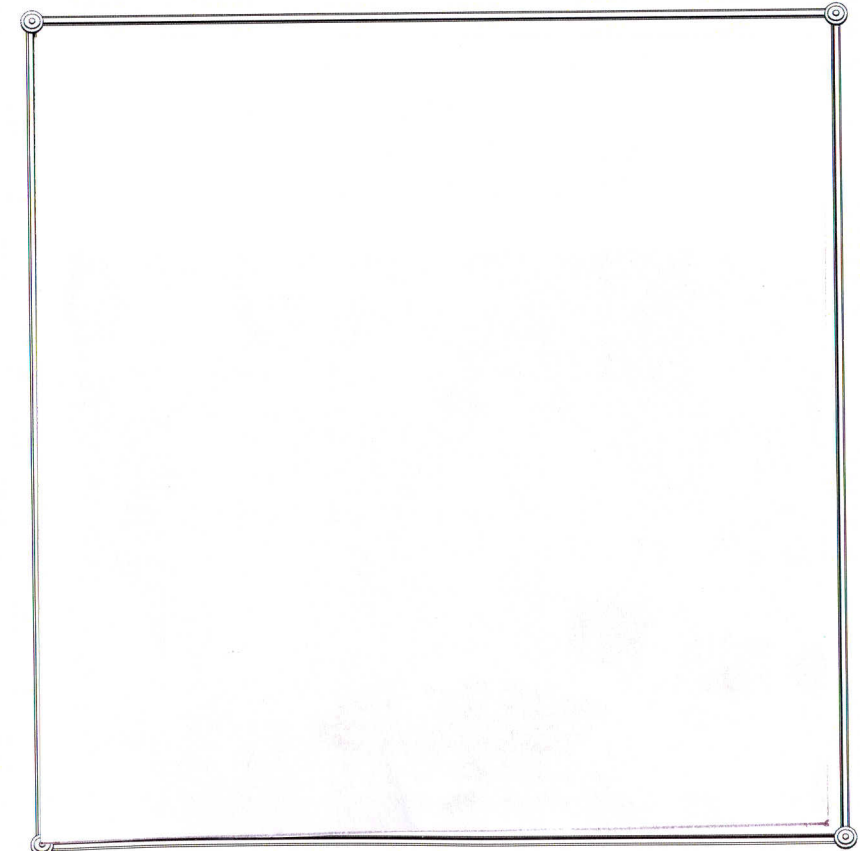
John

★
 ★ The chapter's library catalog is available on ★
 ★ our web site ★
 ★ <http://community.nawcc.org/chapter107> ★
 ★

New Members

Lots of folks have joined Chapter 107 recently. Our newest members are Nicholas Capozzoli and Jim Kane. Hopefully, they will attend our August picnic, too. Let's celebrate our new members at every meeting by introducing ourselves and letting them know what's happening in Chapter 107.

★
 ★
 ★ *Editor's Note's* ★
 ★ In the June Bulletin I googled, "wood movement clock"
 ★ and it came back with several options. In this issue I
 ★ have included some information on books .
 ★
 ★



The full story of the early American wooden clock making industry is presented for the first time with the publication of:

***American Wooden Movement Tall Clocks:
1712-1835***

These wooden clocks were produced across New England and Ohio by an extensive and complex network of clockmakers and allied craftsmen working from 1712-1835. Prior to this publication, little information has been available to collectors seeking information on these makers and their clocks. With detailed essays and exquisite photography, the author documents the fascinating story of this industry from the early hand-crafting period, to the development of interchangeable parts by Eli Terry for the Porter Contract, and finally mass produced factory-made clocks. Collectors and scholars alike will appreciate the in depth biographies of the clockmakers and the men and women with ties to the wooden clock-making industry. It is the author's sincere hope that this volume will become a valued reference book for collectors and others with an interest in horology and that the reader will gain a greater appreciation for these early American treasures.

512 Pages with over 600 detailed photographic illustrations of clocks, movements, dials and cases. More than 500 in full color.

Detailed biographies of over 625 clockmakers, factory employees, cabinetmakers, dial painters, suppliers and peddlers.

Guide to identifying and dating early American wooden tall clocks.

Guide to identifying regional differences between clocks.

Illustrated clock and case terminology.

Completely referenced and indexed.

Authored by Philip E. Morris Jr., a widely recognized authority on wooden tall clocks, *American Wooden Movement Tall Clocks: 1712-1835* is an essential reference book for collectors, dealers or students of early American clocks, furniture, antiques or decorative arts. Lavishly illustrated and meticulously researched, this volume is the most comprehensive, accurate and up to date compilation of early 18th and 19th century wooden clockmakers and their clocks available.

Continued on page 7

Continued from page 6....New information obtained from the study of hundreds of wooden clocks, account books, diaries, genealogical records, family histories, town histories, probate records and period newspapers is included. 2011 Heritage Park Publishing - 4484 Heritage Park Drive - Hoover, AL 35226 - email: pmorris@heritageparkpublishing.com

OUTSTANDING CLOCKS:

Over seven Hundred Years

1250—1950

by

H. Alan Lloyd (1958)

This is a fascinating book. Lloyd's aim is to present the work of major but under recognized makers. As indicated by the title he starts with the earliest known clocks and carries through to the immediate post-war period. Many of the clocks discussed are incredibly intricate having numerous dials depicting the motions of the sun, moon, planets and stars as well as religious days including moveable events such as Easter. Others are notable for innovations that produced improved performance. The volume includes 152 pages of text, 173 high-quality black and white photos and numerous sketches. Those interested in details of how the clocks were constructed including the gear trains and contrivances needed for the many dials will find a wealth of information. The rest of us may want to skip some of the details. One should not skip too much because lots of "oh I didn't know that" facts are buried in the text. I found it frustrating that while the explanations of uncommon features referred to the photos, it was difficult to find the particular features in the photos, particularly for complicated, unfamiliar movements. Arrows or other visual aids would have made the text more understandable. There were also quite a few typographical errors. In spite of these limitations, I recommend this book to anyone interested in the development of mechanical clocks over time beyond rehashing the usual information. This book is available in the NAWCC Library and can be borrowed. Copies in the \$30 range can be found for purchase on the internet.



June 2014 Meeting



Barry S. Goldberg's
Pocket Watch Collection

History of the American Railroad Pocket Watch:

Many collectors feel that American watchmaking reached its pinnacle with the invention of the railroad watch. In an effort to meet the stringent and rigorous demands of the railroads, where the incorrect time could and did prove disastrous, American watchmakers were called upon to make a watch that was incredibly reliable and incredibly accurate -- far more so than any watch previously being manufactured. And they met the challenge! Following years of development, by the turn of the 20th century American watch factories were producing pocket watches of unsurpassed quality. Watches that would lose no more than 30 seconds per week. Watches that were specially adjusted to keep accurate time no matter what position in which they were held, and in both cold weather and hot. Watches where all the major wheels were jeweled in order to prevent wear from long hours, days, years and decades of constant use.

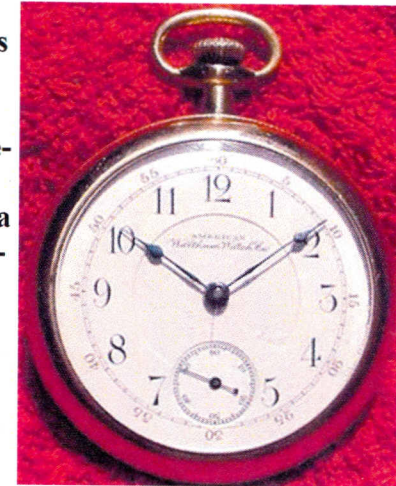
The main requirement for a railroad watch was, of course, that it be accurate. Throughout the twenty years from 1890 to 1910, the various railroads' watch standards evolved, demanding more stringent adherence to safety and good timekeeping principles. Although minor local differences remained, they became uniform enough such that the watch companies could build, at reasonable cost, both 18 size, and later 16 size, watches that would be accepted on any railroad. By the 1930's, however, only size 16 watches were approved, and these watches had to also have at least 19 jewels, be lever set, open face and adjusted to five positions, temperature and isochronism [i.e. the watch couldn't gain or lose time as the spring wound down].

Not all watches that were built to meet the railroad standards were actually accepted for service on all railroads. After all, there were local differences and some railroads used official "lists" of approved watches. However, there were instances where even though a certain make and grade watch might not appear on the official list, it was accepted for service by the inspector out in the field. In addition, many pocket watches that were officially approved were actually made to higher specifications than required for a "railroad grade" watch. Many companies produced extra fine railroad watches that had 21-23 jewels [sometimes more!], that were adjusted to six positions instead of just five, and even had extra "wind indicator" dials to let you know how much the watch was currently wound.

These watches are especially prized by many collectors as being the absolute best of the best.

Continued on page 11

This is an 18 size, 17 jewel Waltham Model #1899, "Santa Fe Route" Grade -- a special railroad watch either named for or actually made for use on the Santa Fe Railroad. Although later railroad grade watches had to have 19 and then 21 jewels, at the time this watch was made they could also have 17 jewels. It is stem wind and lever set, and is simply marked "adjusted" [probably adjusted to temperature and 3 positions]. The nickel movement is marked "Santa Fe Route" and is gorgeously damaskeened. The watch is housed in a nice gold-filled case. The dial, unfortunately, is not original to the watch, since it should be marked "Santa Fe Route" the same as the movement. The serial number is 7454893, which dates it to about 1896. This watch is listed in Shugart's "Complete Price Guide to Watches" as a "two star" watch, meaning that fewer than 1000 are known to exist.



This is a size 18 Illinois "Bunn" with 17 jewels. The serial number [1380986] dates it to about 1899, and at the time it was made it was an approved railroad watch. The watch is marked as "adjusted" and is stem wind and lever set. The watch is housed in a base metal case with an absolutely stunning engraving of a locomotive on the back.



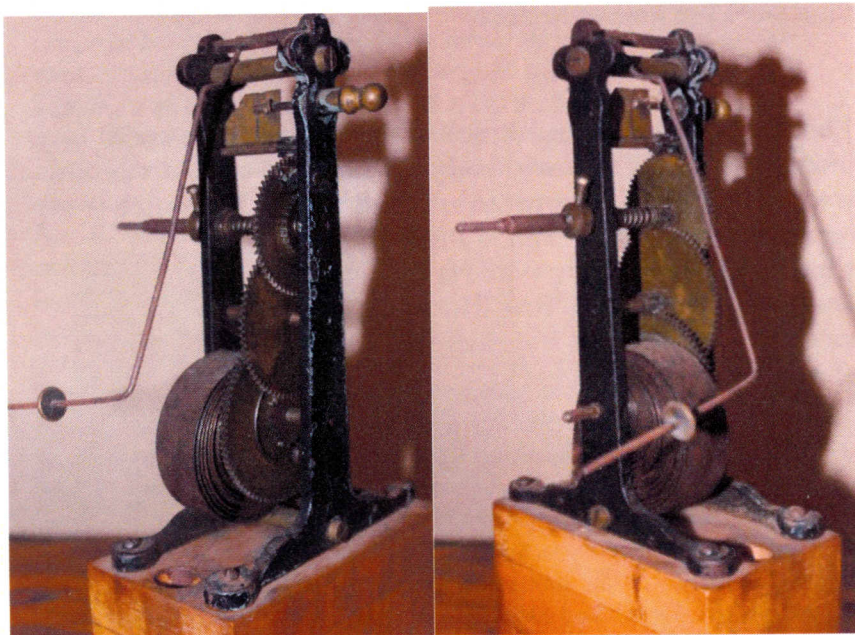
Continued on page 13

Photo of Vince Angell and his Alarm Clock Collection at the June Meeting



Mystery movement

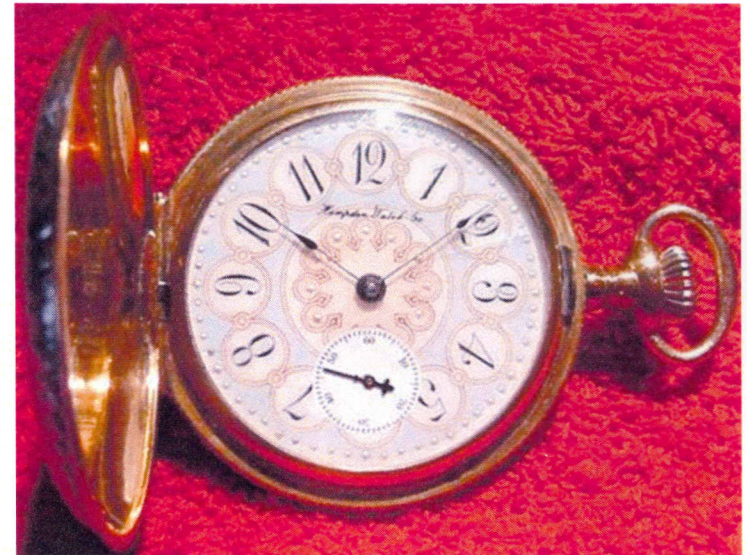
If you know what movement this is and what it goes to please let me know. Hopefully I'll have an answer in the next bulletin. Email: justfourkicks@comcast.net



What an amazingly beautiful watch!

This is a Hampden "John Hancock:" railroad grade pocket watch. It is 18 size, is stem wound and lever set and has 21 jewels. The watch is in a heavy gold filled hunter case with gorgeous engravings on both the front and back.

The nicest thing about it, however, is the stunning fancy glass enamel dial. Usually, dials like this are found on relatively low grade watches, so it's especially rare to find one on a high grade railroad watch! The serial number on this watch is 1027379, which dates it to about 1898. Although later railroad standards forbade hunter case watches, at this early date they could still be railroad approved



Time Flies When You're
Collecting Pocket Watches!

CHAPTER #107 MEETINGS

Second Sunday of the Even Numbered Months

Mart: 10:30AM
 Chapter: 12:00PM
 Board: after the Chapter Meeting

Future Meeting Dates

October 12, 2014
 December 14, 2014
 February 08, 2015

We want to keep our members coming to the chapter meetings on a regular basis. If you have problems with transportation to and from meetings, let a director or officer know so we can help you find a carpool.

Only NAWCC members can participate (buy or sell) in our Mart. Be prepared to show your current membership card.

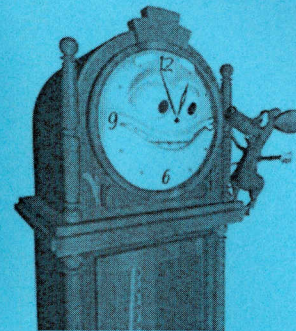
Other NAWCC Chapter Meetings in Northern California		
Chapter	Meeting Address	Meetings
De Anza #94	Odd Fellows Lodge 20589 Homestead Rd Cupertino, CA	2 nd Sunday even months (except April)
Monterey Bay #70	Live Oak Grange Hall 1900 17th Ave Santa Cruz, CA	3 rd Sunday odd months
Sacramento #71	Sacramento Garden Center 3330 McKinley Blvd. Sacramento, CA	4 th Sunday odd months
San Francisco #5	Boys and Girls Club 401 Marina Blvd. San Leandro, CA	2 nd Sunday odd months

DIRECTIONS TO CHAPTER MEETINGS

(except August and December)
743 Diablo Road, Danville

Take Interstate 680 to the Diablo Road exit in Danville. Go east on Diablo Road for 0.6 mile. The Grange Hall will be on your right. Parking is available in the front and rear. Enter from the front; *i.e.*, street side. Facing the building from the street, there is a ramp on the right side for handicap and cart access.

CHAPTER LIBRARIES



BOOK: The Chapter book library is located at Classical Clocks and Antiques, 1082 E. Stanley Blvd., Livermore. Contact Nile Godfrey (925-449-2127) for more information.

VIDEO: Chapters 107 and 5 share a DVD video library. Contact Price Russ (925-937-9231) for information.

TOOL: Contact Walt Hubrig (925-685-0260) or Price Russ (925-937-9231) for information on the tools and parts available for use by Chapter members.

Disclaimer

Statements of opinion and/or fact made by authors of papers or articles read before or appearing in the publications of the Chapter are to be accepted as the author's own. The Chapter assumes no responsibility for the accuracy or correctness of any statement of its contributors. This statement of responsibility shall appear in each issue of the Bulletin containing any of the foregoing.