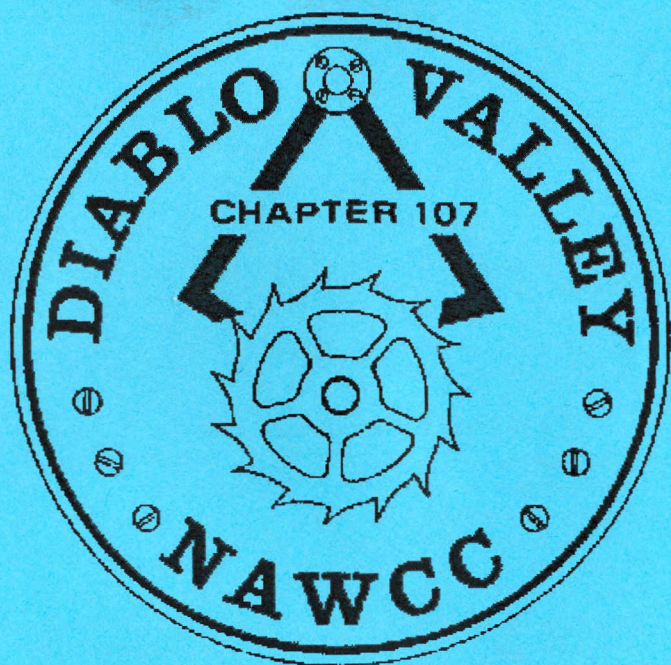


BULLETIN



February 2014
Volume 211

President's Message

Working together we can continue to make 2014 an exciting and productive year for chapter 107. I want to thank the outgoing officers, directors, committee members and all who participate in chapter activities for making 2013 such a successful year for the chapter. **Price Russ** merits a special thank you for his tireless work on behalf of the chapter.

Please note that our first regular meeting has been changed from the second Sunday of February to the first Sunday due to a conflict with the hall. This is the only meeting affected by this conflict for the year. I'm writing this before our first board meeting scheduled for January 19. Several exciting items are on the agenda including bringing in a special speaker, purchase of a video recorder and microphone, as well as several other interesting proposals. A report of the board meeting will be presented at our February meeting. Anyone who has suggestions or ideas to improve the chapter, please pass them on to me or one of the other board members.

In the past the home tours of **Dale Gardner** and **Bob Simons** collections have been a highlight of chapter activities for me. We are looking for volunteers who are willing to invite the chapter to view their collection. We also need a site for the chapter picnic and white elephant auction for August. Please let me know if you are interested in hosting one of these activities.

Finally, I would like to mention our chapter web site at www.nawcc.org. If you have not checked it out please do so. You will find copies of the bulletin, chapter bylaws, what's available in our lending library and other interesting items.

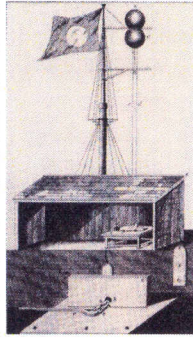
John

2014 BUDGET

CATEGORY DESCRIPTION	2013 Actual	2014 Budget
INCOME		
CD INTEREST	\$114.00	\$100.00
MEMBERSHIPS	\$1,200.00	\$1,200.00
OTHER		
Auction Sales	\$198.00	\$100.00
Chapter Pins	\$0.00	\$0.00
Library/Tools/Video Sales	\$0.00	\$0.00
Donations	\$195.00	\$0.00
Programs	\$0.00	\$0.00
Refunds	\$0.00	\$0.00
Christmas Lunch	\$945.00	\$950.00
Total other Income	\$1338.00	\$1050.00
TOTAL INCOME	\$2652.00	\$2350.00
EXPENSES		
BULLETIN & NOTICES		
Postage	\$35.00	\$30.00
Other	\$43.00	\$50.00
TOTAL BULLETIN & NOTICES	\$78.00	\$80.00
FOOD & DRINK		
Christmas	\$1,181	\$1,200.00
Meetings	\$371.00	\$150.00
Picnic	\$218.00	\$200.00
TOTAL FOOD & DRINK	\$1,170.00	\$1,550.00
INSURANCE	\$0.00	\$0.00
LIBRARY: Books, Tools, Videos	\$0.00	\$0.00
MISCELLANEOUS		
Bank Charges	\$0.00	\$0.00
Donations	\$0.00	\$0.00
Membership Refunds	\$0.00	\$0.00
TOTAL MISCELLANEOUS	\$0.00	\$0.00
P. O. BOX	\$180.00	\$190.00
PHOTOS	\$0.00	\$0.00
PROGRAMS	\$0.00	\$50.00
REGIONAL	\$0.00	\$0.00
RENTALS (Grange Hall, Danville)	\$480.00	\$480.00
TOTAL EXPENSES	\$2508.00	\$2,350.00
OVERALL TOTAL	\$143.00	\$0.00

Distributing the Time

Previous articles discussed obtaining and keeping time. To be useful to society at large, the time needs to be distributed. In the late 1820s, a Captain Wauchope of the Royal Navy came up with the idea of dropping a ball on a pole atop the observatory at a specified time. His plan is shown in the picture. This method was implemented at Greenwich in 1833 and around 1845 in Washington. It was particularly important for allowing ships in harbors to check their timepieces. Another popular but less accurate way was to fire a cannon or ring a bell. (By knowing distance from the observatory, the report could be corrected for the speed of sound.) The use of such methods was limited to those within sight or hearing of the observatory. Distributing time to more distant locations depended on transporting a well-regulated balance wheel clock from the observatory to the remote location.

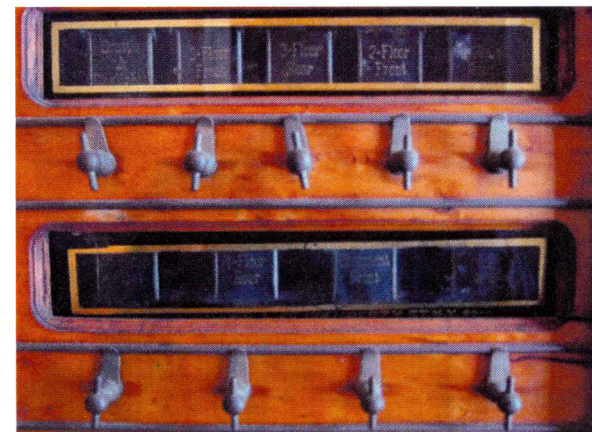


This changed with the invention of the telegraph. In 1865 the Naval Observatory was connected to the Washington fire-alarm telegraph and a signal from the observatory was used to strike the fire bells at 8 AM, noon, and 6 PM. Time balls, rather than being manually operated, could also be released by telegraph signals linked to electromagnets. Western Union had a connection in the State Department Building, which was connected to the fire-alarm system. Western Union connected its lines to the fire-alarm system and started sending time signals throughout its network. Because each city worked on its own local time, the signals had to be corrected for the difference from Washington or more specifically Naval Observatory time. Western Union's role in distributing time led to conflicts particularly with observatories that were in the practice of selling their time signals. Ultimately Western Union won out. As late as the 1950s, Western Union telegraph machines and clocks were commonly found in businesses all over the country.

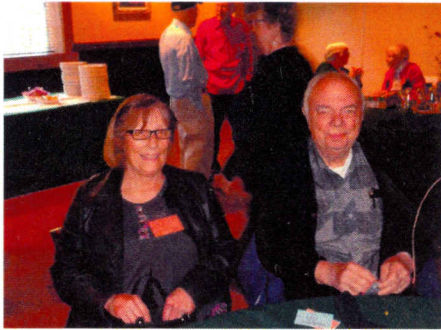
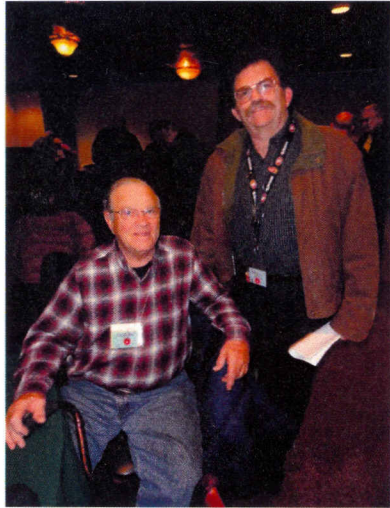
Continued on page 11

Waterbury Clock Co., wall-mounted, pendulum movement, clock that is dated Sept. 13, 1898.

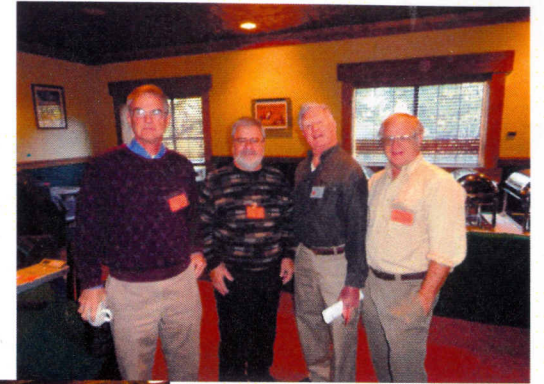
I imagine that it is one of the earliest security alarms. It once had a dry cell battery. Wiring within connects to displays labeled Scuttle & Skylight, 3rd Floor Rear, 2nd Floor Front, etc. Apparently the clock was connected to doors and windows throughout the premises. When the connection was either broken or made the clock's bell would sound and a display would indicate where the intrusion was made.

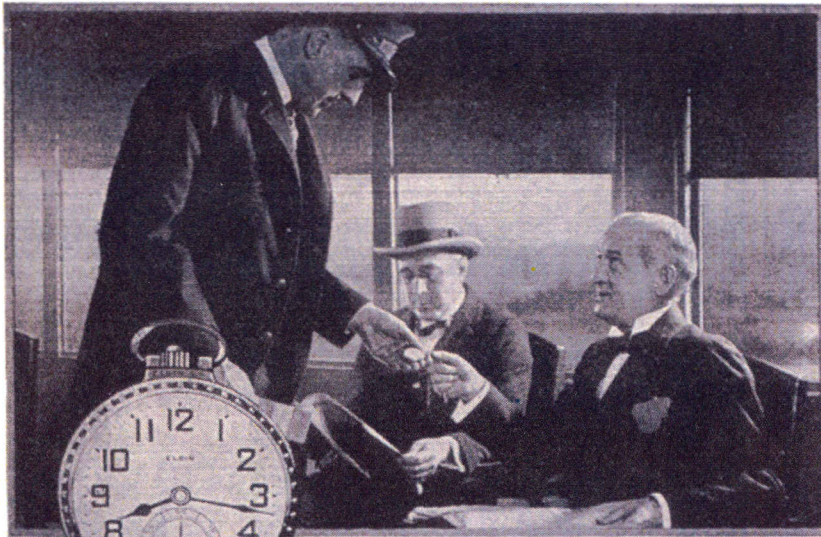


*****Ingersoll Alarm System which utilized a Waterbury Clock movement



December 2013 Meeting





The Elgin
B. W. Raymond—21 Jewels

© E. N. W. CO.

“You see, I took a railroad man’s tip and got an Elgin”

The commuting banker—proud of his reputation for punctuality—had missed his evening train twice in a month.

But his conductor-friend gave him scant sympathy. “Why don’t you get rid of that ornamental antique of yours?” he bluntly queried, “and get a real watch—a railroad man’s watch—an Elgin 21 jewel B. W. Raymond?”

Shortly thereafter, the banker began to live—and travel—on time.

That’s another interesting fact about the Elgin B. W. Raymond model.

Though primarily designed and built expressly to railroad standards, it is becoming almost as popular with business men, as it has been, since its inception,

with seasoned railroad men. One reason for this is that the B. W. Raymond is as good to look at, as it is unflinching in performance.

Though a Hercules in its capacity to take punishment without flinching, the B. W. Raymond is neither clumsy nor ugly. It is lithe, trim and graceful in design. A Spartan “on duty”—a dress watch when service clothes are discarded for dress wear.

Almost any official railroad time inspector will welcome the opportunity to tell you of the amazing scientific perfection of this Elgin model. But don’t merely listen! Look! You’ll see a time-piece that combines maximum watch elegance with maximum service efficiency.

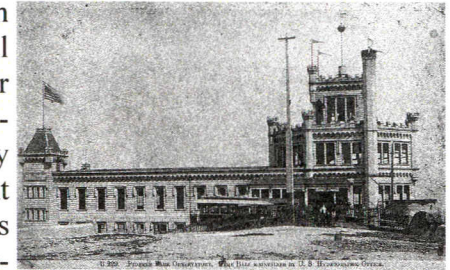
ELGIN

THE WATCH WORD FOR ELEGANCE AND EFFICIENCY

ELGIN NATIONAL WATCH COMPANY ELGIN, U. S. A.

Continued from page 6

Time balls proliferated in the late 1800s as prestige item and way to get time to the masses. In the San Francisco time ball locations included: the Pioneer Park Observatory on Telegraph Hill (shown), the Ferry Building, and the Fairmont Hotel. The lady on the pole is protesting (1937) on the Fairmont Hotel time ball to “Save the San Francisco Time Ball”.



Radio brought further changes. The navy began radio transmission of time in 1904. As commercial radio developed, stations provided time as a service to the listeners. By the mid-1940s the National Bureau of Standards was broadcasting time signals. This led to conflicts over roles and responsibilities. (While NBS was responsible for frequency standards, the primary responsibility for time remains with the Naval Observatory.)

Today time distribution is embedded in the internet, GPS, cell phones, cable TV, and so on. Twenty years ago we were generally happy knowing the time to within a few minutes. Now it would be difficult to find disagreement to the second among our “smart” devices.

One important change

Mart hours will be from 9:30 to 11:30 with the formal meeting and program starting at noon.



CHAPTER #107 MEETINGS

Second Sunday of the Even Numbered Months

Mart: 9:30AM
 Chapter: 12:00PM
 Board: after the Chapter Meeting

Future Meeting Dates

April 13, 2014 June 08, 2014
 August 10, 2014 October 12, 2014
 December 14, 2014 February 08, 2015

We want to keep our members coming to the chapter meetings on a regular basis. If you have problems with transportation to and from meetings, let a director or officer know so we can help you find a carpool.

Only NAWCC members can participate (buy or sell) in our Mart. Be prepared to show your current membership card.

Other NAWCC Chapter Meetings in Northern California		
Chapter	Meeting Address	Meetings
De Anza #94	Odd Fellows Lodge 20589 Homestead Rd Cupertino, CA	2 nd Sunday even months (except April)
Monterey Bay #70	Live Oak Grange Hall 1900 17th Ave Santa Cruz, CA	3 rd Sunday odd months
Sacramento #71	Sacramento Garden Center 3330 McKinley Blvd. Sacramento, CA	4 th Sunday odd months
San Francisco #5	Boys and Girls Club 401 Marina Blvd. San Leandro, CA	2 nd Sunday odd months

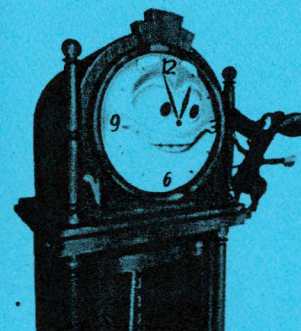
DIRECTIONS TO CHAPTER MEETINGS

(except August and December)

743 Diablo Road, Danville

Take Interstate 680 to the Diablo Road exit in Danville. Go east on Diablo Road for 0.6 mile. The Grange Hall will be on your right. Parking is available in the front and rear. Enter from the front; *i.e.*, street side. Facing the building from the street, there is a ramp on the right side for handicap and cart access.

CHAPTER LIBRARIES



BOOK: The Chapter book library is located at Classical Clocks and Antiques, 1082 E. Stanley Blvd., Livermore. Contact Nile Godfrey (925-449-2127) for more information.

VIDEO: Chapters 107 and 5 share a DVD video library. Contact Price Russ (925-937-9231) for information.

TOOL: Contact Walt Hubrig (925-685-0260) or Price Russ (925-937-9231) for information on the tools and parts available for use by Chapter members.

NOTICES FOR MEMBERS

(The Bulletin accepts notices from Chapter members for all items/subjects horological - wanted, for sale, give-away, services, and so forth. There is no charge. All you have to do is supply copy to the editor.)

Wanted: Articles for the *Bulletin*. Contact Tina Thomas (209) 481-3930.