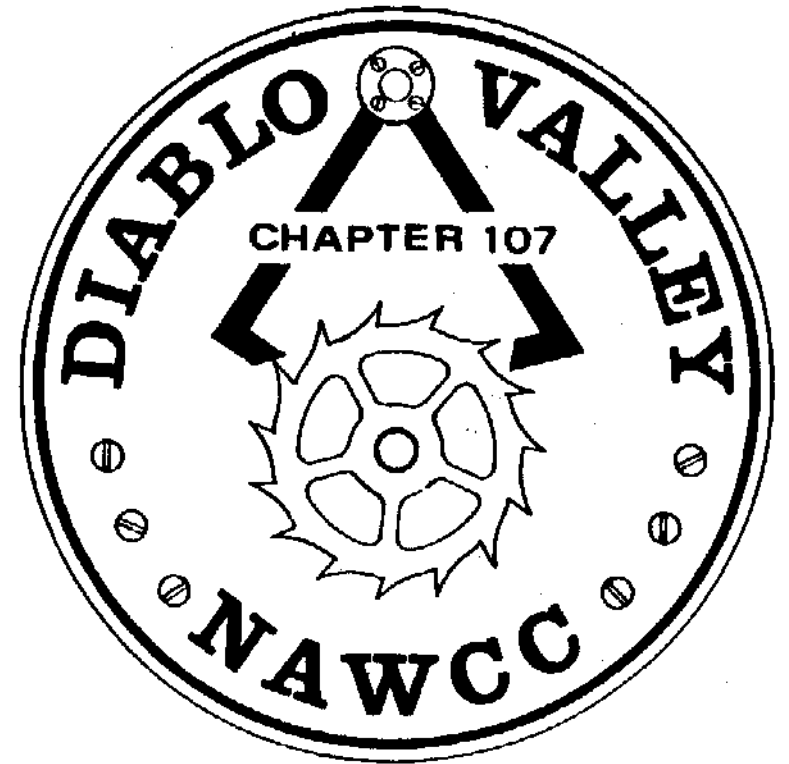


# BULLETIN



**June 2009**  
**Volume 183**

# DIABLO VALLEY

## Chapter 107

National Association of Watch and Clock Collectors

Chapter Established March 5, 1978

### "Accent on Education"

#### OFFICERS

President	Tom Kochmann	925-228-8436	kochman3@aol.com
Vice Pres.	Nile Godfrey	925-449-2127	jng3@aol.com
Vice Pres.	Jay Taylor	510-522-2409	nutnut@alamedanet.net
Secretary	****open****		
Treasurer	Walt Hubrig	925-685-0260	dottiewalt@astound.net
Past Pres.	Dean Thomas	925-455-0929	dno337@att.net

#### DIRECTORS

2009	Bert Bradley	510-527-3454	bertrambradley@cs.com
2009	Chip Kumparak	408-499-4538	chips@garlic.com
2009	Bob Thomas	209-823-3863	btclock@comcast.net
2009-2010	Gareth Busher	925-686-5983	
2009-2010	Ross Smith	925-820-2180	mainuse@msn.com

#### COMMITTEE CHAIRS

Display	****open****		
Editor	Price Russ	925-937-9231	gpruss@pacbell.net
Library	Nile Godfrey	925-449-2127	jng3@aol.com
Mart	****open****		
Membership	Earl Watrous	510-569-4175	efwatrous@yahoo.com
Nominating	****open****		
Photo	Sophia Gardner	510-531-7565	
Program	Jay Taylor	510-522-2409	nutnut@alamedanet.net
Program	Nile Godfrey	925-449-2127	jng3@aol.com
Raffle	Jack Coulter	925-284-1031	
Refreshment	Lois Naye	925-934-4557	lnaye@aol.com
Tool Library	Walt Hubrig	925-685-0260	dottiewalt@astound.net

# Meeting Notice

June 14, 2009

Mart 11:30 Meeting 12:30

Room B-8

Acalanes Adult Center

## Basic Lathe Work by Tom Kochmann

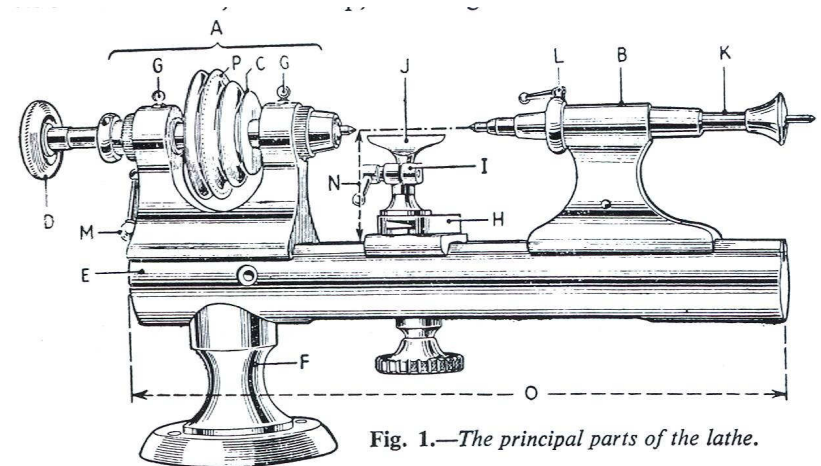


Fig. 1.—The principal parts of the lathe.

- |                     |                 |                            |
|---------------------|-----------------|----------------------------|
| A. Headstock.       | F. Foot.        | L. Runner fixing lever.    |
| B. Tailstock.       | G. Oil caps.    | M. Headstock fixing lever. |
| C. Pulley.          | H. T-rest shoe. | N. Height of centres.      |
| D. Draw-in spindle. | I. T-rest bush. | O. Length of bed.          |
| E. Bed.             | J. T-rest.      | P. Index holes.            |
|                     | K. Runner.      |                            |

## IN MEMORIUM

John Stohr, who probably did more for Chapter 107 than any other member, passed away on May 22.

It would be impossible to list all of John's contributions to our chapter. However, his interests were not limited to clock repair and keeping the chapter functioning. Among other things, he was active in his lodge and liked to garden. (There was always a vegetable plot along the walkway from the driveway to the front door.)



As tribute to John, a few of his *Bulletin* articles focused on helpful hints are reprinted in this issue, which is dedicated to his memory.

### *President's Message*

By the time you receive this message, news of John Stohr passing may have already reached you. Having recently fallen ill, and on steady oxygen, John's health went fast. It was only last summer that he helped carry cases of soda into my mom's backyard at the picnic. This just one of thousands of tasks, small and large, John did for the chapters he was involved with. John was also in the Masonic Lodge and one can only imagine that he was just as active there. I always counted on John, and when you phoned him for something he would always answer the phone with a "Stohr"! I didn't know John very well on a personal level, and having known him for thirty five years feel somewhat sorry for that. I just always knew that when he was involved, things were going to be OK. As we remember John in our own way it has occurred to me that wherever he is now I am sure he is helping to run the show.

*Tom*

### *Editor's Page*

This morning, May 23, 2009 I called the Stohr residence to ask John if it would be a good time to pick up the pictures taken at the last meeting. It was always John's practice to drop off the pictures and when the *Bulletin* was ready for mailing, he would pick them up, staple, fold, seal, and mail them. Earlier this week he called me to say he had the pictures but was "out of steam" and was not sure he could get them to me. We agreed that I would pick them up later in the week. I tactfully asked John if he would like me to take over the tasks associated with mailing the *Bulletin*. Characteristically he declined. You can imagine my shock when I called this morning, and his son informed me that John had passed away last night. He also said the family did not want to ruin the holiday weekend for John's friends, so they were not going to spread the word until Tuesday. This really touched me. It seemed to sum up John's character - always do what you can for the other person while quietly keeping things moving forward.

John was a long-term member of Chapter 107. I can not think of anyone who has contributed more to its success over the whole history of the Chapter. To say he will be sorely missed is a gross understatement. During the time I have been in the chapter, John has officially been the Secretary and Chair of the Nominating Committee. In reality he was the force driving almost all Chapter activities. He put together the slate of officers, arranged for speakers, helped organize the picnic, wrote up Chapter activities for the *NAWCC Bulletin* and quietly did whatever needed to be done. John was also always willing to help with clock repair problems.

I would like to dedicate this issue to John; *aka* Johnny. Because of the family's request not to spread the news and my schedule, I have not been able to include tributes from the membership in this issue. If you would like to write a few words or an article about John, I would be happy to print it in the next issue.

*Price*



## CLOCK WHEEL REPAIR

From Issue 57 April 1988

The making or cutting of a new clock wheel is beyond the ability of most repair people. A few, like Tom Kochmann in our area, have the elaborate equipment needed to do the job.

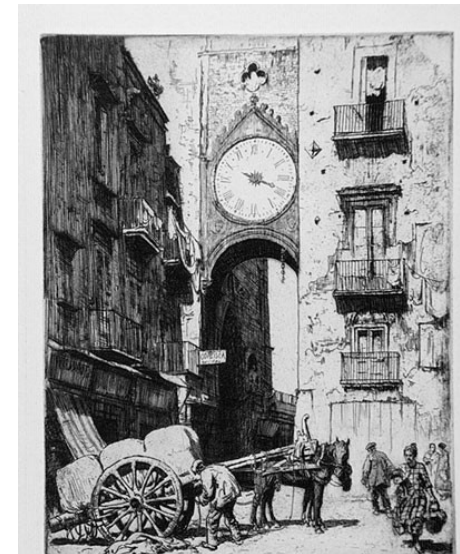
However most clock wheels missing only a few teeth can be repaired. The first step is to cut an inset into the rim of the wheel, spanning the width of the lost tooth or teeth. A jeweler's saw or a small swiss type file or both are needed for this critical step. A dovetail type cut will add strength to the replaced tooth. In the area removed from the wheel, tightly fix an oversized blank strip of brass which will be soldered into the wheel rim. The tighter the fix, the stronger the repair.

When the replacement strip has been fitted, remove and lightly tin with solder along the edges of the wheel cut and replacement strip. Refit and solder the two edges together. Dress the repaired area with a file to a uniform thickness of the wheel. Prior to hand filling in the missing teeth, I like to make a pattern of the existing teeth by laying the wheel on paper and tracing with a sharp pencil, the teeth outline. Trace a greater number of teeth than are missing from the wheel. Cut out the pattern and lay on the brass strip so that the existing teeth on either side of the replacing strip match. With a sharp scribe, trace the teeth shapes into the blank area. (Use a felt tip pen with permanent ink applied to the blank, allow to dry, trace pattern into the inked area). Now hand file, and your wheel is repaired.

(note on soldering: Solders are of two types; hard and soft. Soft solder has a high percentage of lead and melts at a temperature under 400 Degrees Farenheit. Solder bought in the hardware store is soft solder. There is a "soft-hard" solder called "tix" which contains some silver and is much stronger. Tix requires a special flux, both of which are available through Horological suppliers. Hard solder also called silver solder, contains a large percentage of silver, requiring greater heat and a borex flux to apply. Silver solder has much greater strength than soft solder but requires skills and heat similiar to welding to apply.)

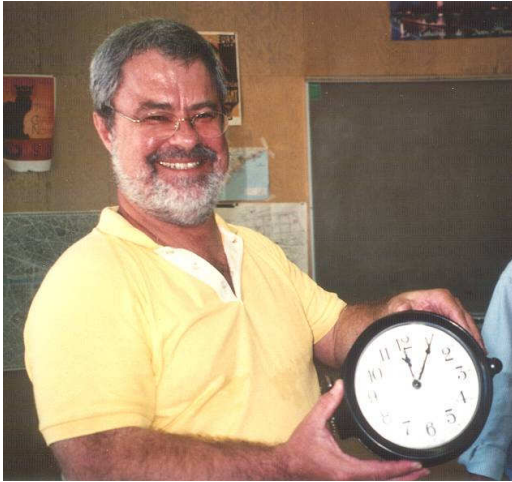
John Stohr

## NAPLES, ITALY

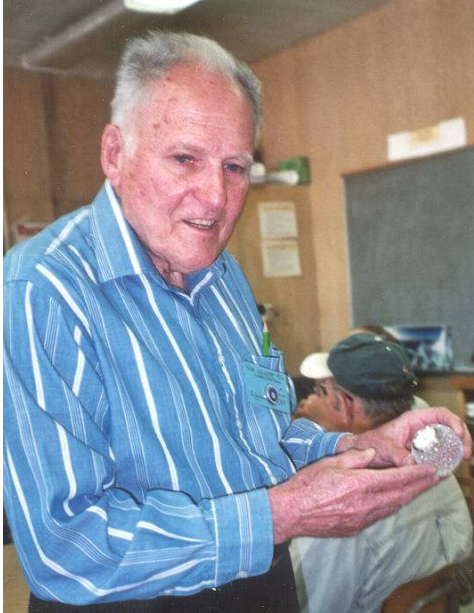


This drawing of the Naples Fish Market Clock was made in 1938. Did the clock survive the war? John was stationed in Naples during World War II. Could this clock have kindled John's interest in clocks?





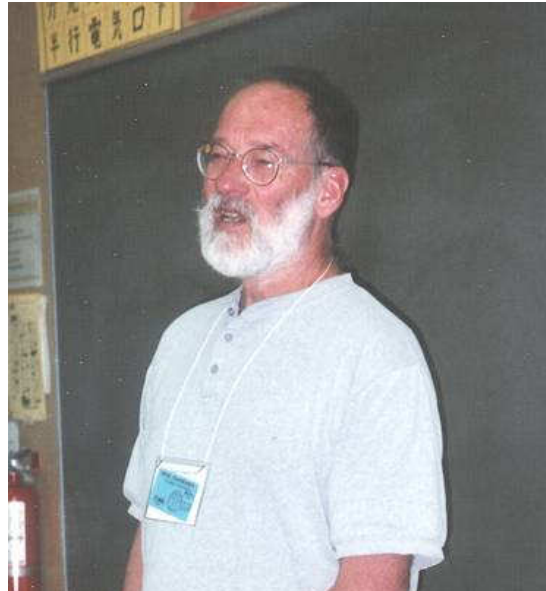
Jerry Konicek (new member)



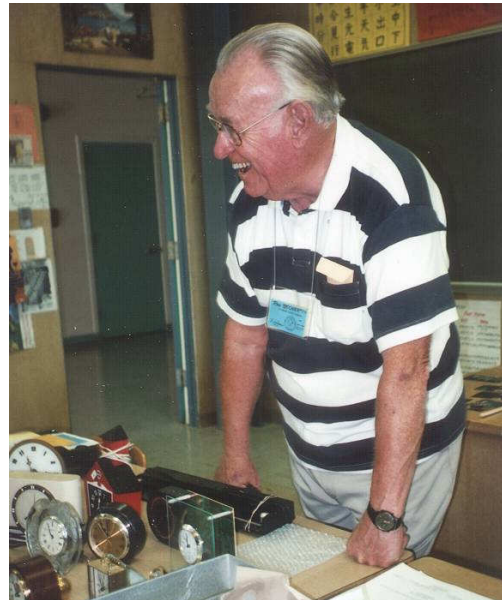
Bob Wahrer

# April 2009 Meeting

Photos by Sophia Gardner



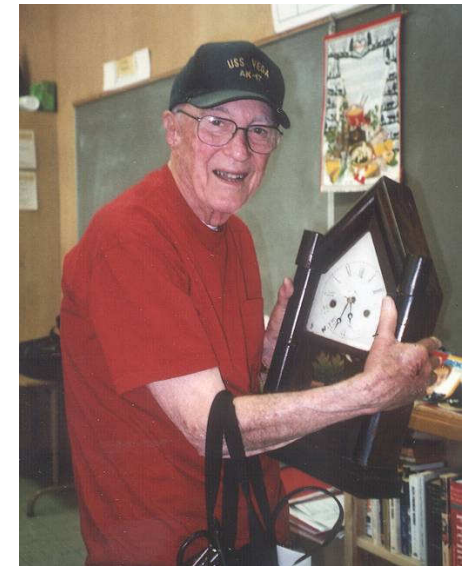
Seth Finkelstein (speaker)



Ron Bechler



Gareth and Jean Busher  
Bert Bradley on right



Joe Kanter





PENDULUM WOBBLE . . . . . by John Stohr

Had trouble with pendulum clocks where the pendulum wobbles or dishes? Here's some ideas that might help.

Pendulum wobble can be caused by looseness in the top support or suspension spring mounting post. Excessive spring movement should be removed by tightening the mounting arrangement. However, don't tighten too much. Wobble more likely is caused by the suspension spring being too tight in its slot. To verify, remove the pendulum and check that the suspension spring, pinned in position, can pivot freely under its own weight. Any sign of friction must be removed. Friction can also be caused by the taper pin or screw holding the spring being tight in the spring mounting hole.

With the suspension spring free to align itself with the vertical, next check for buckle or "oilcan" effect when the spring flexes. If you see buckle, remove spring and check spring edges for dents, bends or stretch. Replace spring if found.

With two legged springs, both edges must be parallel at the flex point where they enter the reinforcing plates. Sometimes both legs can be bent an equal amount to one side or another as a temporary fix until a new spring is available.

The sandwich of metal or plastic at the top of the suspension is for both strength of the mounting hole in the spring and also as a straight edge for the spring to flex against. This edge should be square to the length of the spring.

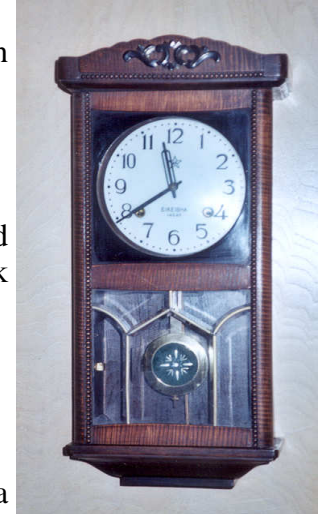
*Continued on page 11*

## Wait. Don't Tell Me!

What is the significance of the clock on the right?

What trick did John Stohr recommend for getting a mainspring arbor to "pick up" the inner coil of the spring?

What is the principal purpose of oiling a main spring?



Continued from page 10

While not as critical as the suspension spring, checks should be made of the pendulum hook to verify that the pendulum on the hook can align itself vertically.

Another point to check is the crutch or point where the suspension contacts the pendulum or pendulum hanger. If this point does not lie in vertical center line of the pendulum, a twisting movement is created which can also cause wobbles.

If all else fails, try a stiffer suspension spring which will change the frequency of the pendulum swing and also correct wobble.

*John*

From Bulletin Issue 68 April 1990

## OK, Now Tell Me.

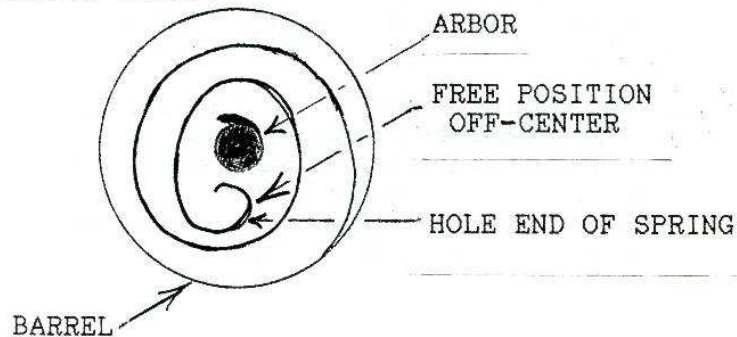
The clock is the one described by John Stohr in the October 2006 *Bulletin* as his favorite. It was also his first.

The following is from *Bulletin* Issue 69, June 1990.

Can't get the spring arbor winding hook to pick up the spring?

If your'e having trouble getting a spring arbor to pick up the inner coil of a mainspring this may help.

To hook the mainspring, the inner coil need not be a "tight" fit on the arbor. it must be "snug" enough to allow the arbor hook to pick up the spring and also to allow the second inner coil to compress the first coil around the arbor when wound to obtain the holding power.



The following is from "Hole End Clock Springs" by John Stohr, *Bulletin* Issue 72, December 1990.

Lubrication --

A good quality clock spring with polished surfaces will perform better dry than with heavy grease or oil lubricants. Use a light oil or grease to prevent corrosion rather than lubrication.

*continued on page 13*

*continued from page 12*

Heavy oil or grease bridges the coil leaves causing a viscous drag or plate adhesion and adds to the pressures normally present between leaves of the spring coil. This causes a "jerky" output to the clock time train as the spring unwinds.

Surface roughness on any clock spring can reduce output torque. This includes rust pits which can also cause spring breakage. The smoother the surface, the better the action.

(For more information on hole end springs, see the original article.)

## CHAPTER LIBRARIES

**BOOK:** The Chapter book library is located at **Classical Clocks and Antiques**, 1086 E. Stanley Blvd., Livermore. Contact **Nile Godfrey** (925-449-2127) for more information.

**VIDEO:** Chapters 107 and 5 share a DVD video library. Contact **Price Russ** (925-937-9231) for information.

**TOOL:** Contact **Walt Hubrig** (925-685-0260) or **Price Russ** (925-937-9231) for information on the tools and parts available for use by Chapter members.

There is no cost to borrow items from these collections.

## NOTICES FROM MEMBERS

(The Bulletin accepts notices from Chapter members for all items/subjects horological - wanted, for sale, giveaway, services, and so forth. There is no charge. All you have to do is supply copy to the editor.)

**Wanted:** Price Russ is looking for copies of Chapter 107 Bulletins 6-28, 40, 54, 55, 78, 93, 102, 104, 106 110, 111, 112-115, 118, and 119 to complete his collection. Contact him if you can supply these issues or let him make copies.

## CHAPTER #107 MEETINGS

### Second Sunday of the Even Numbered Months

Mart: 11:30AM  
 Chapter: 12:30PM  
 Board: after the Chapter Meeting

### Future Meeting Dates

August 9, 2009	October 11, 2009
December 13, 2009	February 14, 2010
April 11, 2010	June 13, 2010

We want to keep our members coming to the chapter meetings on a regular basis. If you have problems with transportation to and from meetings, let a director or officer know so we can help you find a carpool.

**Only NAWCC members can participate (buy or sell) in our Mart. Be prepared to show your current membership card.**

Other NAWCC Chapter Meetings in Northern California		
Chapter	Meeting Address	Meetings
<b>De Anza #94</b>	Odd Fellows Lodge 20589 Homestead Rd Cupertino, CA	2 <sup>nd</sup> Sunday even months (except April)
<b>Monterey Bay #70</b>	Live Oak Grange Hall 1900 17th Ave Santa Cruz, CA	3 <sup>rd</sup> Sunday odd months
<b>Sacramento #71</b>	Sacramento Garden Center 3330 McKinley Blvd. Sacramento, CA	4 <sup>th</sup> Sunday odd months
<b>San Francisco #5</b>	Boys and Girls Club 401 Marina Blvd. San Leandro, CA	2 <sup>nd</sup> Sunday odd months

## DIRECTIONS TO CHAPTER MEETINGS

### *Sunday Meetings* (except August and December)

#### From Oakland - Highway 24 going East

Take Pleasant Hill Road South exit.  
 At light, turn right onto Pleasant Hill Rd.  
 At end, turn left on Olympic Blvd. Go 0.9 miles.  
 At light, turn right onto Tice Valley Blvd. Go 0.6 miles.  
 Turn right into Acalanes Adult Center (1963 Tice Valley Blvd.).

#### From San Ramon - Highway 680 going North

Take Olympic Blvd. exit.  
 Left on Olympic Blvd. Go 0.9 mile.  
 At light, turn left onto Tice Valley Blvd. Go 0.6 miles.  
 Turn right into Acalanes Adult Center (1963 Tice Valley Blvd.).

#### From Benicia - Highway 680 going South

Take Olympic Blvd. exit.  
 Right on Olympic Blvd. Go 0.8 mile.  
 At light, turn left onto Tice Valley Blvd. Go 0.6 miles.  
 Turn right into Acalanes Adult Center (1963 Tice Valley Blvd.).

### VOLUNTEER NEEDED

The Chapter needs someone to serve out John's term as Secretary. One of the Secretary's responsibilities is submitting articles to the "Chapter Highlights" section of the *NAWCC Bulletin*. It is important for the Chapter to be represented in the national publication. Please consider volunteering.

