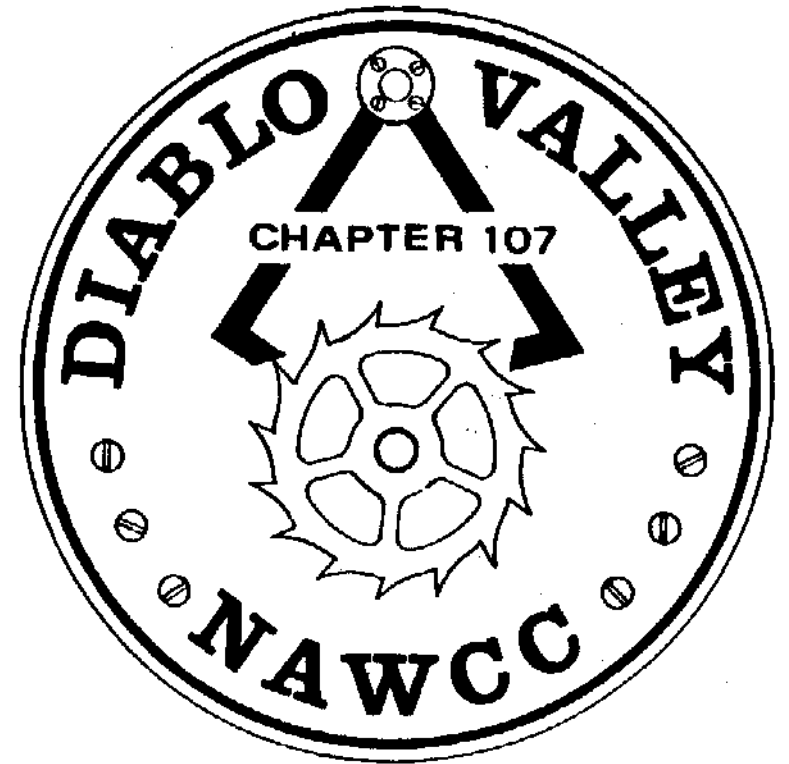


BULLETIN



October 2008
Volume 179

DIABLO VALLEY

Chapter 107

National Association of Watch and Clock Collectors

Chapter Established March 5, 1978

"Accent on Education"

OFFICERS

President	Dean Thomas	925-455-0929	dno337@att.net
Vice Pres.	Jay Taylor	510-522-2409	nutnut@alamedanet.net
Vice Pres.	Earl Watrous	510-569-4175	efwatrous@yahoo.com
Secretary	John Stohr	925-376-6476	jstohr@sbcglobal.net
Treasurer	Walt Hubrig	925-685-0260	dottiewalt@astound.net
Past Pres.	Clarence Kobel	925-447-3383	

DIRECTORS

2008	Tom Armour	510-654-3363	
2008	Bob Wahrer	925-462-4912	jbwahrer@pacbell.net
2008-2009	Bert Bradley	510-527-3454	
2008-2009	Chip Kumparak	408-499-4538	chips@garlic.com
2008-2009	Bob Thomas	209-823-3863	btclock@comcast.net

COMMITTEE CHAIRS

Display	****open****		
Editor	Price Russ	925-937-9231	gpruss@pacbell.net
Library	Nile Godfrey	925-449-2127	jng3@aol.com
Mart	****open****		
Membership	Roy Holman	510-530-5428	royholman@gmail.com
Nominating	John Stohr	925-376-6476	jstohr@sbcglobal.net
Photo	Sophia Gardner	510-531-7565	
Program	Jay Taylor	510-522-2409	nutnut@alamedanet.net
Program	Earl Watrous	510-569-4175	efwatrous@yahoo.com
Raffle	Jack Coulter	925-284-1031	
Refreshment	Lois Naye	925-934-4557	lnaye@aol.com
Tool Library	Walt Hubrig	925-685-0260	dottiewalt@astound.net

Meeting Notice

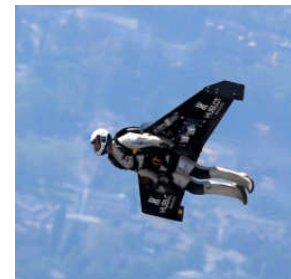
October 12

Mart 11:30 Meeting 12:30

Room B-8
Acalanes Adult Center

Introduction to
The Chapter Library
by
Nile Godfrey

VAGUELY HOROLOGICAL NEWS



On September 26th, Yves Rossy, aka FusionMan, crossed the English Channel using a jet powered wing. He was sponsored by Hublot a Geneve watchmaking firm. If you are bored with the usual metal cases - gold, platinum, titanium, and so on - they offer a man's wristwatch completely covered in baguette diamonds.

President's Message

From the hot rods in the driveway, to the hotdogs on the grill.....this was one of the best ways to end our summer.....our Chapter Picnic!

A special thanks goes out to John and Walt, for their culinary skills and for their ability to withstand the hot sun. Also, thanks to everyone that supplied the salads, side dishes and desserts. Did you know that Lois Naye actually IRONS the tablecloths she brings for the tables?

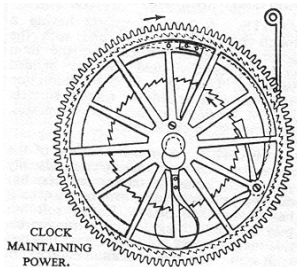
Price had a full day in the sun himself. As our Auctioneer, he did his usual outstanding and humorous job as he bought and sold his own donations; thanks to his wife Bernice.

One of the highlights of the auction was the competitive bidding between Nile Godfrey and Ron Bechler for the Chelsey Ships Clock, donated by Walt. Thanks to all those that donated to the auction as well as those who bid. It's for the good of our chapter.

The old world custom, of having guests arrive through the front door, so they can be greeted by the hostesses, Ingrid and Gisela, was charming and appreciated. Thanks Tom for introducing us to your family and for hosting the picnic.

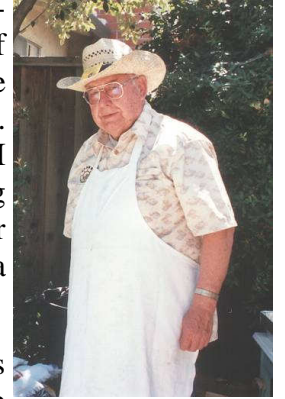
If you were unfortunate enough to have missed the picnic, you will have another opportunity to participate in the auction at our holiday party in December. So, go through your closets again and bring a sought after Horological prize for the auction table! See you there!

Dean



Editor's Page

Let me start by joining Dean in thanking the Kochmann family for hosting the picnic. It was great. Unfortunately I do not have any pictures of the Kochmann family to include in this issue. If someone has pictures of Ingrid, Gisela, and Tom that they would like to share, I can include them in the next issue. In addition to those mentioned by Dean, I would like to recognize Jay Taylor for doing the shopping. The centerfold picture of our chefs does not do justice to Walt, here is a better one.



Thanks also go to Joe Kanter for alerting us to the closing of the Hungry Hunter and Bob Wahrer for his article on the Worshipful Company of Clockmakers. By the way, admission to the Company's museum is free.

For those curious about the Hublot watch mentioned on page 3 and shown below, it can be yours for only \$1,000,000. In addition to the diamonds, it includes a sixty second flying tourbillon movement. At least one gets a quality timekeeper along with the bling. Personally I don't care for the idea of it having a rubber strap, so I am not going to buy one.

Price



THE WORSHIPFUL COMPANY OF CLOCKMAKERS

Last July, Jan and I spent a few days of vacation in London. We had a good time examining the horological items in the many museum of London. A visit to The National Maritime Museum at Greenwich was also fitted into our schedule. However, I would like to tell you about one unexpected highlight of our trip. This was a visit to the museum of “The Worshipful Company of Clockmakers”.

While in London, I noted a reference to “Clockmakers Museum” on a map that only showed a few major streets. The museum was in the center of a about a mile square between several main streets. I could not find any reference to this museum on any other map or directory. Furthermore, no one that I asked knew anything about it. Jan and I decided to take a bus to the general area and walk around to see if we could locate this place. After about 2 hours of walking with no success, we went into the Museum of London which was near by. The first 5 or 6 people that we asked did not know anything about the “Clockmakers Museum”. Finally, one person at the museum recalled that it was nearby at the “Guldhalbry”, (Or something that sounded like that. Actually she was saying ”Guildhall Library” in the local accent.) In spite of her accent, this lady was very helpful. She located the Guildhall Library on their ‘MapQuest’ and printed out a map for us. We were now all set to go to the museum the next morning.

The Guildhall Library is a modern building, about a 6 block walk from our bus stop. The Guildhall Library was founded in 1420 to preserve records relating to the history of London and to the trade guilds. The receptionist there directed us to the “Clock Room”. The Company of Clockmakers was established in 1631, whereas the museum was started in 1817. The museum was last refurbished in 2002. Their impressive collections has many items, watches, clocks and tools, dating from the sixteenth century thru to the present. Most unusual was the lack of anyone else in and around the museum. Only one security person was seen several
(continued on next page)

IMPORTANT CHAPTER ISSUES

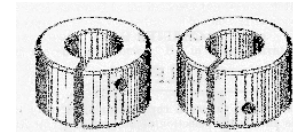
December Luncheon Meeting Location

The Hungry Hunter has gone out of business. Walt Hubrig and others have been working on finding a new location. Their findings will be presented at the upcoming meeting for discussion. Be thinking about what aspects of the luncheon are important to you and how much you are willing to spend.

Chapter Officers

New officers and directors will be elected at the December meeting. John Stohr, the chair of the Nominating Committee, is looking for suggestions - particularly for President and the two Vice Presidents. Also Roy Holman has indicated that he wants to step down as membership chair. You can volunteer or nominate someone else for any of these positions. These offices are vital to the continuing success of the Chapter. Please consider serving.

Flat hairspring
collet



Breguet hairspring
collet

(Guildhall, continued from previous page)

doors down the hallway. All of the tall case clocks were running and there was a sign indicating that the clocks are wound weekly every Tuesday. Every item was well displayed and cataloged. Jan and I had the whole clock room to ourselves. I took about 40 photos of the collection, but my descriptions got lost and I found that you can get a better view of their items on the internet. I recommend that everyone check out their website for pictures of the collection and of the history of many London clockmakers, www.clockmakers.org.

Has anyone else in the Chapter has been at this museum?

Bob Wahrer

8



1

August 2008 Meeting

Photos by Sophia Gardner



2

9

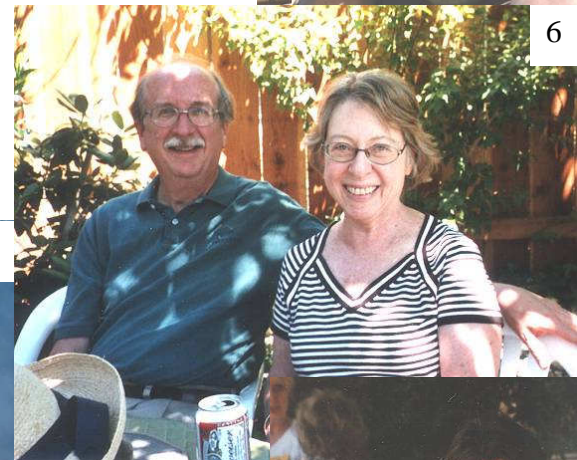


3



4

See page 13 for identities of those pictured.



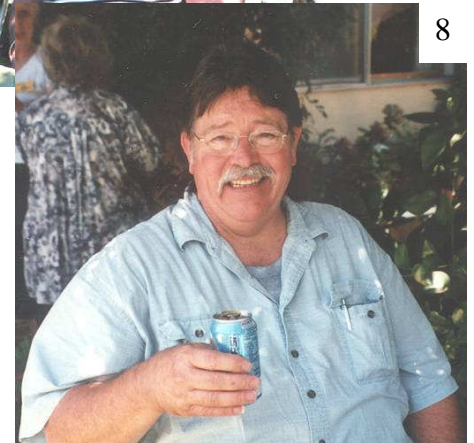
6



7



5

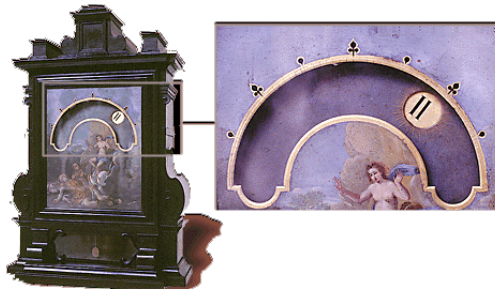


8

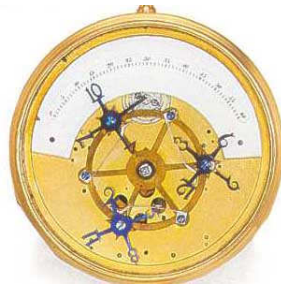
WANDERING HOUR DIALS

A wandering hour dial is one where the hour appears in a window that moves clockwise across the dial. The minutes are indicated by how far along the hour window is in its passage. At the end of the hour, the window disappears on the right and a new hour window appears on the left. Such displays are also known as floating hour or chronoscope.

These dials were developed by the Campanus brothers working in Rome during the late 17th century. Supposedly they were developed for Pope Alexander XII for use at night. A lamp was used to back-light the hour window, so he could read the clock in the dark. The clock shown is from this period.



In the simplest form, there is an outer face with a semicircular cutout. Behind the outer face there is a circle with two windows 180° apart. It rotates once in 2 hours. As one window goes beyond the cut out, the other appears. Behind this circle there are two disks that move with it. One has odd hours. The other has even. As a new window appears the disk behind it is advanced to show the next hour. Other versions have three or four windows and disks. This three disk watch illustrates the point. (Also see p. 15.)



Wandering hours were adapted for use in watches by the end of the 17th century. This was to reduce the friction that occurs between the two concentric pipes that carry the hands in a conventional watch. One of the most famous makers to adopt this concept was Joseph Windmills (ca. 1640-1724) of London who became Master of the Clockmakers' Company in 1702. It became fashionable for the English king to give such watches to visitors or in recognition of loyalty.

Wait. Don't Tell Me!

Glucydur, isoval, mazak, melior, pinchbeck, and spelter all refer to varieties of what?



This is the coat of arms of what organization?



Where would one find the wandering hour clock with the dial shown on the right?

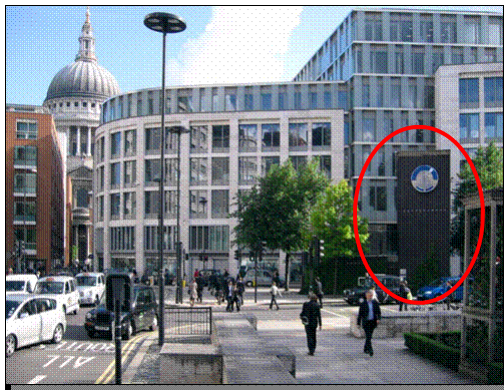
In 1876 Joseph Naphtaly purchased land in Tice Valley. Ultimately he extended his holdings to 1,436 acres on which he raised pears, apples, and wine grapes. He built a winery and distillery on a flat piece of land (a bench) within his holdings. Later he invested in a branch railroad to Danville that started at the corner of Tice Valley Blvd. and Olympic Blvd. The station was called *Saranap* for his wife Sarah. What is now located on the bench where the winery and distillery once stood?

OK, Now Tell Me.

Glucydur, isoval, mazak, melior, pinchbeck, and spelter are names of metals used in horology. Glucydur is a beryllium alloy used in balance springs and uncut balances. Isoval is another alloy used in balance springs. Mazak is used for clock barrels. Pinchbeck is used to simulate gold in plating. (For more on Christopher Pinchbeck see Issue 162, December 2005) Spelter is crude zinc used to cast cheap clock cases.

The coat of arms belongs to the Worshipful Company of Clockmakers of London, which was founded in 1631 by Charles I.

The wandering hour clock dial belongs to the *Newgate Street Clock* erected by the Worshipful Company of Clockmakers in 2006 on Newgate Street, London to celebrate the 375th anniversary of the company. It is located about 200 yards from St. Paul's, which can be seen in the background. The clock is electric and regulated by GPS signals. In addition to the time it digitally displays the date and temperature.



Del Valle School where we hold our meetings is on the site once occupied by Naphthaly's winery and distillery. Rossmoor occupies most of his farm.

FROM THE LIBRARY

Have you ever been stumped by the meaning of a horological term or how to pronounce it? This can be a real problem - particularly with foreign terms. The Chapter Library has several books that can help you. Gerschler's *The Clock & Watch Pronunciary* and *Dictionnaire Horloger Terminologie Numerotation-Eng* by Ebauches Sa are two books devoted to this problem. Gerschler's book includes alternative spellings and common misspellings. For example the entry for *glucydur* lists *glucedor* as an alternative spelling and gives the pronunciation as "glu she dor". Glucydur is discussed further in Wait Don't Tell Me.

AUGUST MEETING PICTURES

1) Nancy Ankrum (new member), 2) Chip Kumparak, and Lucy and Phill Hart, 3) Dick Sears, 4) Lois Naye, 5) John Stohr and Walt Hubrig, 6) Price and Bernice Russ, 7) Mike and Bobbie Kooken, 8) Wayne English

CHAPTER LIBRARIES

BOOK: The Chapter book library is located at **Classical Clocks and Antiques**, 1086 E. Stanley Blvd., Livermore. Contact **Nile Godfrey** (925-449-2127) for more information.

VIDEO: Chapters 107 and 5 share a DVD video library. Contact **Price Russ** (925-937-9231) for information.

TOOL: Contact **Walt Hubrig** (925-685-0260) or **Price Russ** (925-937-9231) for information on the tools and parts available for use by Chapter members.

There is no cost to borrow items from these collections.

NOTICES FROM MEMBERS

(The Bulletin accepts notices from Chapter members for all items/subjects horological - wanted, for sale, giveaway, services, and so forth. There is no charge. All you have to do is supply copy to the editor.)

CHAPTER #107 MEETINGS

Second Sunday of the Even Numbered Months

Mart: 11:30AM
 Chapter: 12:30PM
 Board: after the Chapter Meeting

Future Meeting Dates

December 14, 2008	February 8, 2009
April 12, 2009	June 14, 2009
August 9, 2009	October 11, 2009

We want to keep our members coming to the chapter meetings on a regular basis. If you have problems with transportation to and from meetings, let a director or officer know so we can help you find a carpool.

Only NAWCC members can participate (buy or sell) in our Mart. Be prepared to show your current membership card.

Other NAWCC Chapter Meetings in Northern California		
Chapter	Meeting Address	Meetings
De Anza #94	Odd Fellows Lodge 20589 Homestead Rd Cupertino, CA	2 nd Sunday even months (except April)
Monterey Bay #70	Live Oak Grange Hall 1900 17th Ave Santa Cruz, CA	3 rd Sunday odd months
Sacramento #71	Sacramento Garden Center 3330 McKinley Blvd. Sacramento, CA	4 th Sunday odd months
San Francisco #5	Boys and Girls Club 401 Marina Blvd. San Leandro, CA	2 nd Sunday odd months

DIRECTIONS TO CHAPTER MEETINGS

Sunday Meetings (except August and December)

From Oakland - Highway 24 going East

Take Pleasant Hill Road South exit.
 At light, turn right onto Pleasant Hill Rd.
 At end, turn left on Olympic Blvd. Go 0.9 miles.
 At light, turn right onto Tice Valley Blvd. Go 0.6 miles.
 Turn right into Acalanes Adult Center (1963 Tice Valley Blvd.).

From San Ramon - Highway 680 going North

Take Olympic Blvd. exit.
 Left on Olympic Blvd. Go 0.9 mile.
 At light, turn left onto Tice Valley Blvd. Go 0.6 miles.
 Turn right into Acalanes Adult Center (1963 Tice Valley Blvd.).

From Benicia - Highway 680 going South

Take Olympic Blvd. exit.
 Right on Olympic Blvd. Go 0.8 mile.
 At light, turn left onto Tice Valley Blvd. Go 0.6 miles.
 Turn right into Acalanes Adult Center (1963 Tice Valley Blvd.).



Closing Thought

No matter how long or hard you shop for an item, after you buy it, it will be on sale somewhere cheaper.

Contributed by Joe Kanter