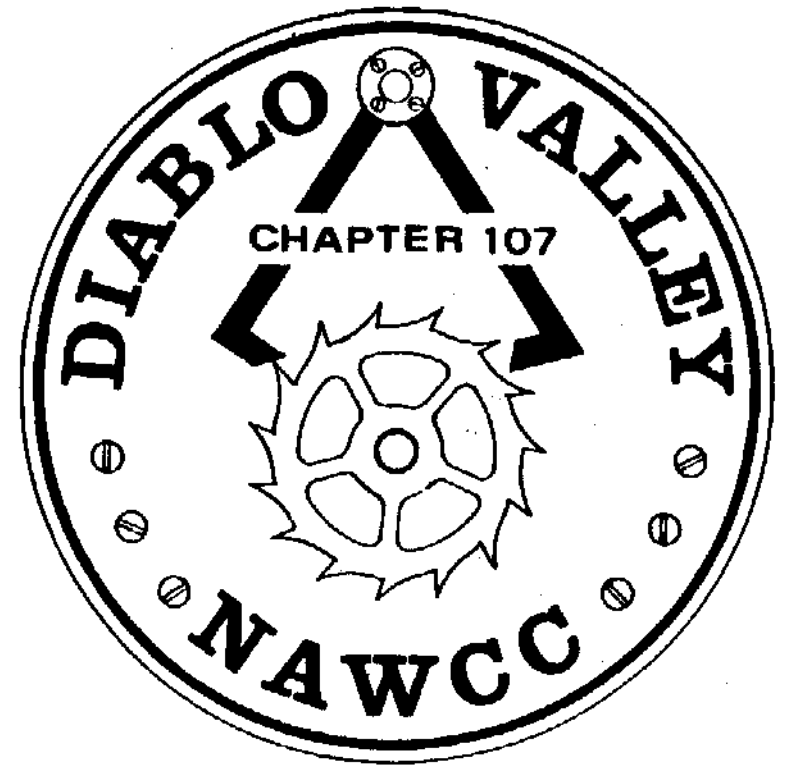


BULLETIN



February 2006
Volume 163

DIABLO VALLEY

Chapter 107

National Association of Watch and Clock Collectors

Chapter Established March 5, 1978

"Accent on Education"

OFFICERS

President	Jack Coulter	925-284-1031	
Vice Pres.	Clarence Kobel	925-447-3383	
Vice Pres.	Roy Clark	925-376-6356	
Secretary	John Stohr	925-376-6476	jstohr@sbcglobal.net
Treasurer	Walt Hubrig	925-685-0260	dottiewalt@ca.astound.net
Past Pres.	Bob Wahrer	925-462-4912	jbwahrer@pacbell.net

DIRECTORS

2006	Gareth Busher	925-686-5983	
2006	Miles Maynard	925-933-8549	mmaynard@pacbell.net
2006-2007	Sandy Cuthill	925-686-3144	
2006-2007	Earl Watrous	510-569-4175	
2006-2007	Dean Thomas	925-455-0929	

COMMITTEE CHAIRS

Display	****open****		
Editor	Price Russ	925-937-9231	gpruss@pacbell.net
Library	Sandy Cuthill	925-686-3144	
	Nile Godfrey	925-449-2127	jng3@aol.com
Mart	****open****		
Membership	Roy Holman	510-530-5428	rholmanjr@juno.com
Nominating	John Stohr	925-376-6476	jstohr@sbcglobal.net
Photo	Sophia Gardner	510-531-7565	
Program	Clarence Kobel	925-447-3383	
Program	Roy Clark	925-376-6356	
Raffle	Jack Coulter	925-284-1031	
Refreshment	Lois Naye	925-934-4557	lnaye@aol.com
Tool Library	Walt Hubrig	925-685-0260	dottiewalt@ca.astound.net

Meeting Notice

February 12, 2006

Mart 11:30, Meeting 12:30

Room B-8

Acalanes Adult Center

INTERESTING CLOCK PLACES IN AND AROUND LONDON

BY

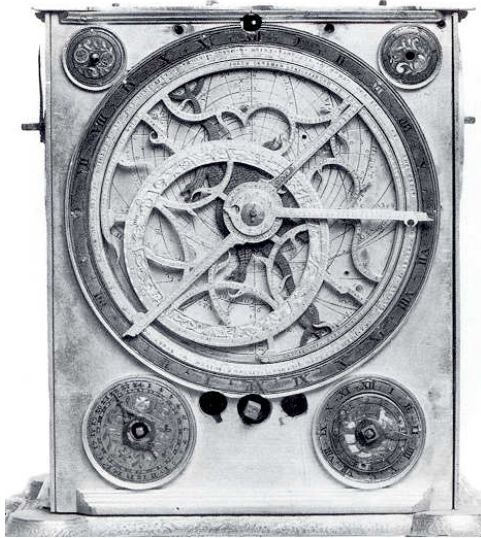
LEE TAYLOR



CLOCKS IN THE BARGELLO (4)

This German type 16th century clock (gilded bronze, 18 cm H, 13.7 W, 14.5 D, Latin inscriptions) is constructed with faces on each of four rectangular sides. Because of its complexity, it merits a detailed face-by-face description. This article will cover only the front and back faces. A future article will discuss the other faces and the symbols for the hours of the day.

The center of the front face is an astrolabe surrounded by a circle divided twice into 12. The drum is adjusted to 52 degrees north, which indicates the clock was for use in northern Germany. In the astrolabe, there is a silver dragon that indicates the period of the lunar orbit, whose cusps are represented by the dragon's head and tail. On top of this, the circle of the zodiac has been inserted showing the constellations and the most important stars.



Near each of the four corners there is an enameled medallion. The two smaller ones, near the top, are for regulating the movement - time on the left, and strike on the right. The medallion on the lower left has one hand and is divided in 24. The one on the lower right has one hand but two dial circles, each divided in 12 indicating the mechanism of an alarm clock.

The back face (page 10) also has a central dial and 4 enameled medallions. In the center there is a large circle, divided into 24 parts. This circle may rotate because as shown "1" is in what we would call the "10" position. Inside this circle there are two
Continued on page 10

2006 Proposed Budget

Income:

CD Interest	\$600
Memberships	\$600
Other	
Auction Sales	\$100
Christmas Lunch	\$550
Miscellaneous	\$0

Total Income **\$1,850**

Expenses:

Mandatory	
Bulletin - Printing	-\$100
Bulletin - Postage	-\$150
Insurance	\$0
PO Box	-\$100
Rentals - Acalanes ¹	\$0
Discretionary	
Door Prizes	-\$100
Food & drink - Christmas	-\$1100
Food & drink - Meetings	-\$100
Food & drink - Picnic	-\$200
Library - Books	\$0
Library - Tools	\$0
Library - Video	\$0
Miscellaneous	\$0
Photos ²	\$0
Regional	\$0

Total Expenses **-\$1,850**

Difference **\$0**

¹ Acalanes is not charging for use of the room

² Photos are donated by the Gardeners.



Peggy and Wayne English



Tom and Marsha Beales



Jay Taylor and Dale Gardner

December 2005 Meeting

Photos by Sophia Gardner



Mary and Earl Watrous
with halo



John and Lorraine Stohr



Nile and Cinde Godfrey



Jan and Bob Wahrer



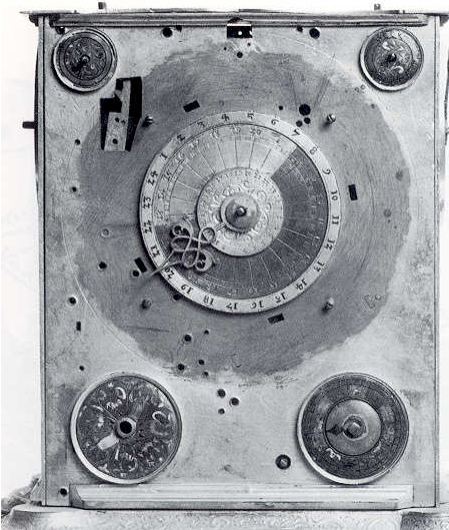
Lee Ann and Bill Koppel

BARGELLO (continued from page 7)

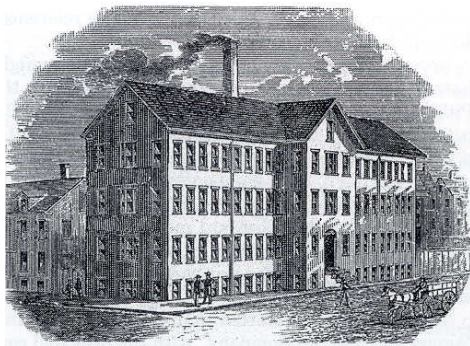
superimposed silver dials for the hours and a small disc divided into the 24 hours. There is also one hand. The hole with the bar inside on the upper left is from a now missing calendar. (The function of the dials is unclear to me but may relate to the system of unequal hours - 12 hours of day and 12 of night. *ed.*)

The two small medallions are for the dominical numbers and the epact. Suffice it to say that these are used

in the calculation of Easter. Those really wanting to know about them can consult *Mapping Time* by Richards. The two larger medallions at the bottom mark the planets that govern the days of the week and follow the motion (path) of the sun through the Zodiac. This topic will be explored further when the other faces are discussed.

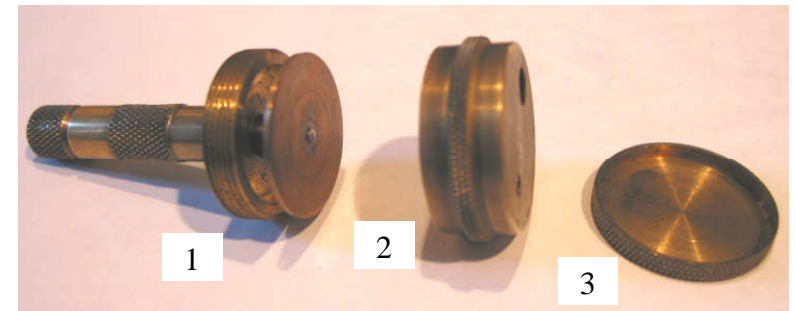


AMERICA'S FIRST WATCH FACTORY



from *Origins of the Waltham Model 57* by Ron Price

Wait. Don't Tell Me!



What is the purpose of this tool? Parts 1 and 2 screw together. The center disk in part 1 can be rotated by the knurled knob on the far left. The center disk and its connecting rod slide in and out with respect to part 2.

We have all heard of “doing it in a jiffy”. How long is a jiffy?



The watch pictured is an early Appleton Tracy and Co. Model 57. What is special about the Model 57?

This issue's closing thought is by Shawn Alexander. Who is he?

OK, Now Tell Me.

The tool is to flatten the ends of balance pivots. According to an old LaRose catalog, Swiss balance pivots are rounded and polished to reduce friction. This may cause the balance to swing too freely. By flattening the tip of the pivot, friction is increased, and the amplitude of the balance's swing is reduced. The balance assembly is placed between the parts 1 and 2 in the photo. The center plate of part 1 is pushed against the end of the balance pivot and turned to abrade the tip. It would seem more sensible to use a weaker spring. One exception might be to bring the mechanism to equal rate in all positions.

According to the on-line encyclopedia Wikipedia, in computer systems a jiffy is the duration of one tick of the system timer interrupt. Typically, this time is 0.01 second.

The Model 57 is the first successful mass produced watch. The Boston Watch Co. founded in 1850 by Dennison, Howard, Davis, and Curtis was the first firm to build watches completely from interchangeable machine-made parts, but their business failed. In 1857 Royal Robbins bankrolled the rebirth of the company as the American Watch Co. in Waltham, MA. and began production of the Model 57 - named for the year it was introduced. Over the next 25 years, nearly a million Model 57s were produced. The story of the Model 57 with all its variants is much too complicated to tell here, For details see Ron Price's new book, *Origins of the Waltham Model 57 (NAWCC Special Order Supplement No. 7)*. This and the companion books *A Study of E. Howard & Co. Watchmaking Innovations 1858 -1875* by Clint Geller and *Boston: Cradle of Industrial Watchmaking* edited by De Lucca were recently released by the NAWCC. (The latter two volumes are *Special Order Supplements* 6 and 5, respectively.) Anyone interested in American watches and/or mass production will want to read these books.

Your editor has no idea who Shawn Alexander is. There is a football player by that name, but is the quotation from him?

NEW GREENWICH EXHIBIT

On February 14, the National Maritime Museum in Greenwich, England will open new galleries devoted to time and space. The themes of the exhibit will be Time and Longitude, Time and Greenwich, Time for the Navy, and Time in Society. Each theme will have its own gallery. The project also includes a new planetarium, an education center, and a horological workshop with public sessions.

INTERESTING GADGETS - NEW AND OLD

Last October the New York Times ran a special advertising supplement on watches. Among the watches said to "turn heads" was the one shown. It is not difficult to figure out how it works, but it is difficult understand anyone actually using it for anything other than a joke. At a retail price of \$20,000, that is some joke.



Also in October, *Scientific American* reprinted an article from 1855 about a patent for an ejector bed. If one did not respond to the alarm clock built into the bed, one side-rail would be released dumping the occupant onto the floor. This is certainly a less subtle snooze alarm than *Clocky*, the clock that jumps off the table and rolls away.

TOOL LIBRARY

Contact **Walt Hubrig** (925-685-0260) or **Price Russ** (925-937-9231) for information on the tools and parts available for use by Chapter members. These are available at no cost.

NOTICES FROM MEMBERS

(The Bulletin accepts notices from Chapter members for all items/subjects horological - wanted, for sale, giveaway, services, and so forth. There is no charge. All you have to do is supply copy to the editor.)

CHAPTER #107 MEETINGS

Days and Times

Mart Second Sunday 11:30AM Even numbered months
 Chapter Second Sunday 12:30PM Even numbered months
 Board Second Sunday after the Chapter Meeting
 Evening First Friday 7:30PM Odd numbered months

Future Meeting Dates

FRIDAY

March 3, 2006
 May 14, 2006
 July 2006 - None
 September 2006 - None
 November 3, 2006
 January 5, 2007

SUNDAY & BOARD

April 9, 2006
 June 3, 2006
 August 13, 2006
 October 8, 2006
 December 10, 2006
 February 11, 2007

We want to keep our members coming to the chapter meetings on a regular basis. If you have problems with transportation to and from meetings, let a director or officer know so we can help you find a carpool.

Other NAWCC Chapter Meetings in Northern California		
Chapter	Meeting Address	Meetings
De Anza #94	Odd Fellows Lodge 20589 Homestead Rd Cupertino, CA	2 nd Sunday even months (except April)
Monterey Bay #70	Live Oak Grange Hall 1900 17th Ave Santa Cruz, CA	3 rd Sunday odd months
Sacramento #71	Sacramento Garden Center 3330 McKinley Blvd. Sacramento, CA	4 th Sunday odd months
San Francisco #5	Boys and Girls Club 401 Marina Blvd. San Leandro, CA	2 nd Sunday odd months (1 st Sunday in May)

DIRECTIONS TO CHAPTER MEETINGS

Sunday Meetings
(except August and December)

From Oakland - Highway 24 going East

Take Pleasant Hill Road South exit.
 At light, turn right onto Pleasant Hill Rd.
 At end, turn left on Olympic Blvd. Go 0.9 miles.
 At light, turn right onto Tice Valley Blvd. Go 0.6 miles.
 Turn right into Acalanes Adult Center (1963 Tice Valley Blvd.).

From San Ramon - Highway 680 going North

Take Olympic Blvd. exit.
 Left on Olympic Blvd. Go 0.9 mile.
 At light, turn left onto Tice Valley Blvd. Go 0.6 miles.
 Turn right into Acalanes Adult Center (1963 Tice Valley Blvd.).

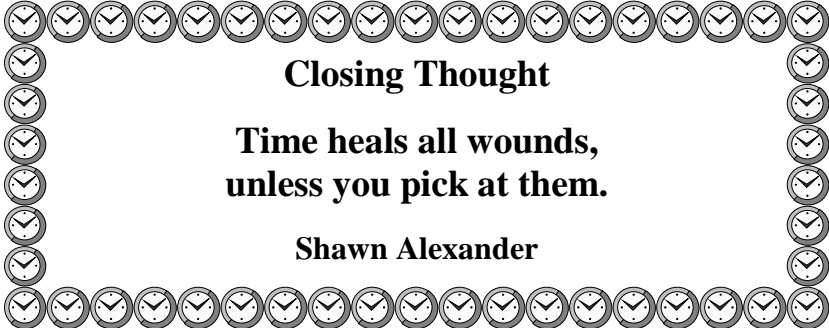
From Benicia - Highway 680 going South

Take Olympic Blvd. exit.
 Right on Olympic Blvd. Go 0.8 mile.
 At light, turn left onto Tice Valley Blvd. Go 0.6 miles.
 Turn right into Acalanes Adult Center (1963 Tice Valley Blvd.).

Only NAWCC members can participate (buy or sell) in our Mart. Be prepared to show your current membership card.



Hole Gauge



Closing Thought

**Time heals all wounds,
unless you pick at them.**

Shawn Alexander