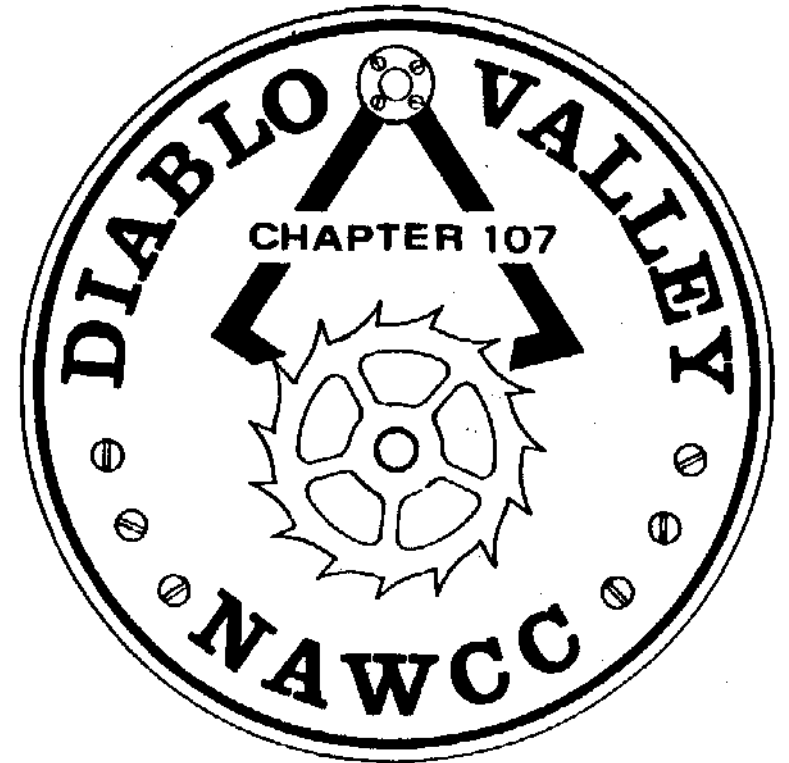


BULLETIN



February 2003
Volume 145

DIABLO VALLEY

Chapter 107

National Association of Watch and Clock Collectors

Chapter Established March 5, 1978

"Accent on Education"

OFFICERS

President	Bob Wahrer	925-462-4912	jbwahrer@pacbell.net
Vice Pres.	Dale Gardner	510-531-7565	
Vice Pres.	Jason Evans	925-376-0654	
Secretary	John Stohr	925-376-6476	jstohr@sbcglobal.net
Treasurer	Walt Hubrig	925-685-0260	
Past Pres.	John Stohr	925-376-6476	jstohr@sbcglobal.net

DIRECTORS

2003	Tom Armour	510-654-3363	armourtom@aol.com
2003	Sandy Cuthill	925-686-3144	
2003	Bill Koppel	925-934-9391	bclockn@sbcglobal.net
2003-2004	Lois Naye	925-934-4557	lnaye@aol.com
2003-2004	Jack Coulter	925-284-1031	

COMMITTEE CHAIRS

Display	****open****		
Editor	Price Russ	925-937-9231	gpruss@pacbell.net
Library	Sandy Cuthill	925-686-3144	
Mart	****open****		
Membership	Roy Holman	510-530-5428	rholmanjr@juno.com
Nominating	John Stohr	925-376-6476	jstohr@sbcglobal.net
Photo	Sophia Gardner	510-531-7565	
Program	Dale Gardner	510-531-7565	
Program	Jason Evans	925-376-0654	
Raffle	Jack Coulter	925-284-1031	
Refreshment	Lois Naye	925-934-4557	lnaye@aol.com
Tool Library	Walt Hubrig	925-685-0260	

Meeting Notices

FEBRUARY 9

Special Mart 11:30

**(Tools and Books from the Collection of
Phil and Sarah Russell - see page 12)**

Meeting 12:30

Room C-7

Acalanes Adult Center

Replacing and Polishing Clock Pivots and Bushings

By Bob Yeomans

Pivot care is basic to clock and watch repair. There are many approaches to this problem. Hear and see how Bob does it. Please chime in with how you do it and why. For those who want to "study up", John Losch's web site, home.att.net/~jclosch/articles.htm, has a good discussion. Another interesting approach to the problem was presented in a series of articles by J. M. Huckabee in *Horological Times*. These articles start in September 2001.

MARCH 7

Topic and location will be announced in a separate mailing. If you have ideas or desires for Friday programs, share them with Bob Wahrer, Dale Gardner, or Jason Evans.

President's Message

Let me start out by wishing everyone a Happy, Healthy and Prosperous New Year! As has been the custom for several years now, the Chapter's December get-together was at the Hungry Hunter Restaurant in Lafayette. Not only did we have a wonderful meal, but we also elected the new officers for the coming year and had our annual clock auction. This year there were more than 50 items to be auctioned off. I hope that everyone enjoyed it as much as I did.

I want to thank the outgoing officers for their service and also thank the new officers for "volunteering" to help during the coming year. Extra thanks goes to John Stohr for his successful effort as nominating chairman. John must have spent many hours on the telephone contacting chapter members and coming up with the slate of new officers for the ballot.

The program at our February meeting will be by Bob Yeomans about Pivot Polishing, Pivot Repair & Bushings. This should be a very interesting and informative program. I personally never seem to get the pivots in a clock that I overhaul polished as fine as I think that they could be. I am looking forward to learn some better techniques for this critical operation.

The programs for this coming year have not all been finalized. If you have any suggestions for a program, please let me or any other board member know about it. Even if it is just a preliminary idea, lets talk about it. Maybe someone in our Chapter can help to develop it into an interesting program. One more thought along this line, I believe that we all have some interesting homological things to share. Personal activities such as: a recent addition to our collection, a repair problem, visit to a museum, book review, etc. would be of interest to others in the chapter. Please feel free to introduce these at any meeting. If you have a short subject that may require about 10

to 20 minutes, and it could not be expanded into an hour program, we may form a full program out of several such 15-minute mini-programs.

Our meetings for February, April, June & October will continue to be at Acalanes Adult School. The specific room(s) will be determined later. August will again be our picnic and December will the Holiday luncheon. Watch this Bulletin for details.

Bob Wahner

Editor's Section

Let me be the first to wish the Chapter a Happy 25th Birthday. (See the next issue for more on the anniversary.) This chapter has always put a strong emphasis on horological education. This is reflected in our motto -"Accent on Education." This Bulletin has been a major part of our educational efforts. Over the past year, I have endeavored to maintain and strengthen that role. Frankly I am starting to run low on ideas and need your help. Yes, you have heard that before, but it gets truer by the issue. Please contribute short articles. If you can't do that, just give me some ideas or questions you would like answered.

Sophia outdid herself with pictures of the Holiday Luncheon and Auction. I had an awful time selecting ones for this issue. There were quite a few excellent pictures of couples. I will bring them to the meeting to distribute. For this issue, I decided to limit myself to ones with clocks as well as people.

The QX3 microscope discussed in the last issue is now being produced by Digital Blue. According to the company's web site, playdigitalblue.com/products/qx3/main, they are available from many sources including toy and computer stores.

Price Russ

WOOD FINISH

At the October meeting I showed a wooden box I made for a pocket chronometer and promised an article on the finish used on the wood. The box is pictured on the right. It is made of mahogany. The design is based on a box shown in von Bertele's book on chronometers and a photo supplied by the Bayer Museum in Zurich.



What I used is called the "4-F" finish. (No, that is not a reference to the Selective Service Board.) It is "Frid's Fast Fine Finish" for its creator Tage Frid, who was an editor of *Fine Woodworking* magazine and the author of several excellent books. His two-volume *Tage Frid Teaches Woodworking* is now available in a single paperback. The following description is paraphrased from this book.

The 4-F finish is based on oil and shellac. It can be applied quickly and easily. This was my first attempt. Frid recommends Watco and orange shellac but other oils can be used. First apply an even coat of oil with a rag. Immediately apply a coat of 3-lb cut shellac with a rag or cheap brush. (Be sure the shellac is fresh.) When the surface is tacky, rub along the grain with 000 steel wool until all the oil and shellac are removed from the surface. Pay attention to corners and other recesses to remove build up there. Wipe the surface clean with a dry cloth. For a higher shine a second coat of shellac can be applied.

Remember that being a shellac finish it is not waterproof so is most appropriate for small pieces not exposed to moisture - definitely not the choice for a tabletop. Water spots can be removed with a little oil rubbed in with steel wool.

Price Russ

HELP NEEDED FOR LIBRARY

For many years, Roy Holman has stored our Chapter Book Library in his home and transported it to meetings. Now that he is traveling more and unable to attend every meeting, he feels the Chapter would be better served by finding a new storage location and a volunteer to bring the books to meetings.

Our book, video, and tool libraries are unique resources and among our greatest assets but only when they are accessible to the members. If you can help with the storage and/or transportation of our books, please, speak up at the next meeting or contact a board (not bored) member. Remember if you store them, you get the perquisite of easy access to the contents.

A QUESTION TO PONDER

I recently purchased a high quality watch. The movement is very clean and has good motion, but I know it has not been serviced recently.

As oil gets old, dirty, and gummy the energy transmitted to the escapement will decrease. This will lead to reduced amplitude of pendulum swing or reduced balance wheel action. Similarly a clean movement with no lubrication will generally have poor action. We know that operating a movement dry or with old lubricant will lead to excessive wear.

Here is my question. If a movement has good action, is it safe to run it? I mean this as a serious question that I would like us to discuss at a meeting.

(Chronometers for polar service were sometimes run dry; *ie*, with no oil, but that is another story. Besides if your life depended on it, you would probably sacrifice the chronometer's lifespan.)

Price Russ

December 2002 Luncheon and Auction

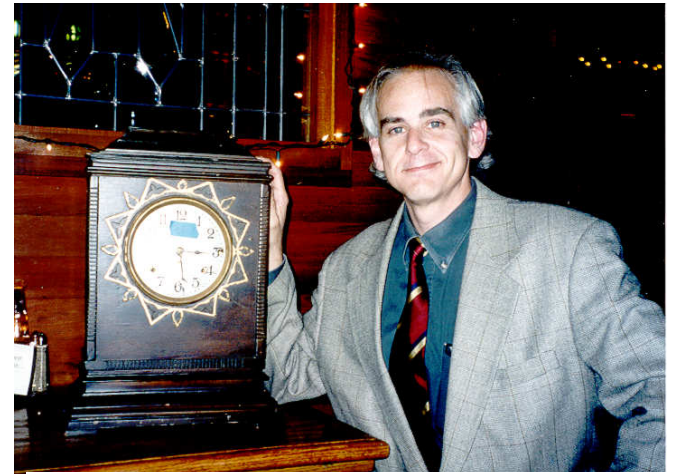
Photos by Sophia Gardner.



Tom Armour



Jennifer and David Kanter



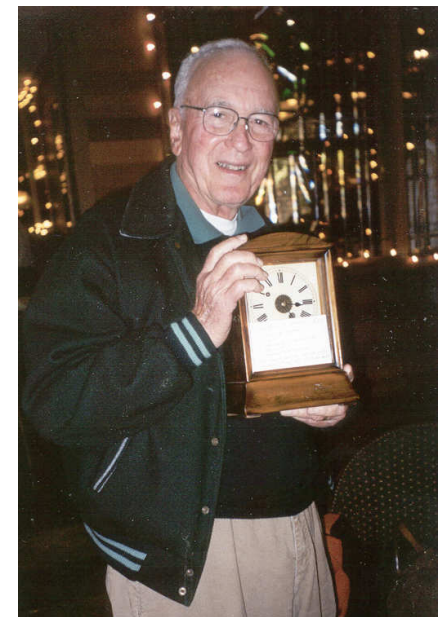
John McKeen



Lee Ann and Bill Koppel



Sandy Cuthill



Joe Kanter

Wait. Don't

Answers to last issue's questions

The clock pictured last issue is the well known "Shepherd's Electro-Magnetic Clock" located just outside the gates at the Greenwich Observatory. It was built by Charles Shepherd and installed in 1852 by George Airy, the Astronomer Royal. It was used to transmit Greenwich Mean Time, GMT, to London and other locations over telegraph lines. It was instrumental in the establishment of standard time throughout Great Britain. For a detailed description see *Electrical Timekeeping* by Frank Hope-Jones of Synchronome fame.

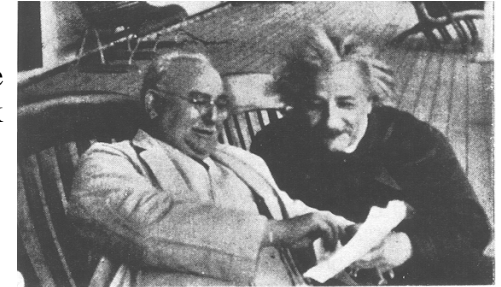
Shellac, an extract from lac bugs dissolved in alcohol, is a common wood finish. It comes dry and in solution. The white variety is bleached and has a shorter shelf-life than the orange variety. Shellac absorbs water and will turn milky if applied under humid conditions. If you must apply shellac in high humidity, dilute with lacquer thinner. Many chemicals will remove shellac. This can be a good or bad thing depending on the situation. Ammonia is an inexpensive remover. Two good references for wood repair and finishing are *The Furniture Doctor* by Grotz and the books by Frid discussed on page 6.

P. T. Barnum's first involvement in American horology was through an 1852 investment in the Litchfield Manufacturing Co. which made paper mache items including clock cases. (40% of the Jerome clock models in 1853 had such cases. If anyone has one of these, it would a wonderful display item for a Chapter meeting.) After a complicated series of transactions, it ended with the failure of the Jerome Manufacturing Co. and the financial ruin of Chauncey Jerome in 1856. The details of story can be found in Bailey's *From Rags to Riches to Rags: The Story of Chauncey Jerome* (NAWCC Bulletin Supplement #15, 1986.)

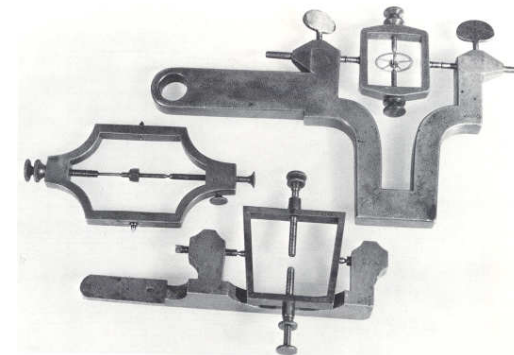
Tell Me!

New Questions

Who is the man on the left and what type clock did he invent?



What type of watch is this? Why is it important?



What are these tools? What is their function?

TOOL AND BOOK DONATION

Fred Bausch has made a generous donation to the Chapter of tools and books that originally belonged to Phil and Sarah Russell. Approximately 50 books and several tools including let-down chucks, movement holders, a spring winder, a bushing tool, and an engraver are being added to our book and tool libraries. The complete list of books will be published at a later date.

Not all of the donated material could be added to our libraries. The rest of the books and tools will be offered for sale to the membership at the February meeting. Proceeds from the sale will go to the Chapter. All members are encouraged to take advantage of this unique opportunity to expand their book and tool collections and to acquire mementos of the Russells who contributed so much to Chapter 107 over the years.



TOOL LIBRARY

The following tools are available for loan.....at NO COST!

Contact **Walt Hubrig** (925-685-0260) for:

- L&R Ultrasonic Cleaner w/basket 11 3/4" x 9 3/4" x 6"
- TIMETRAX #160AC Timing machine with beat amplifier
- Webster Depthing Tool
- Webster Escape Wheel Tooth Straightener
- Power Punch (for end holes in mainsprings etc.)

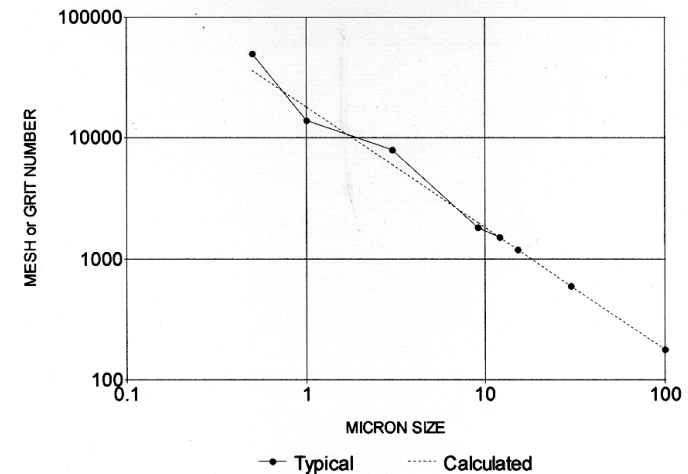
Contact **Price Russ** (925-937-9231) for:

- Unimat Lathe, Electronic watch testers, Seitz Tool,
- WW Lathe drawbar tap and die, Bench Micrometer,
- Watch Cleaning Machine, Demagnetizer, and
- Miscellaneous watch tools and parts

\$ DUES DUE \$

Chapter dues for 2003 are still only \$15.00. This includes your spouse. You may pay at the next meeting or mail a check to Roy Holman at 4300 Everett Ave., Oakland, CA 94602. Please make checks payable to Diablo Valley Chapter 107. Badges can be picked up at any meeting after your payment is received.

EQUVALENT MICRON SIZES & GRIT NUMBER



NOTE: 3/0 Emery Paper is about 15 micron or 1200 Mesh.
4/0 Emery Paper is about 10 micron or 1800 Mesh.

Table contributed by Bob Wahrer

NOTICES FROM MEMBERS

The Bulletin accepts notices from Chapter members for all items/subjects horological — wanted, for sale, giveaway, services, and so forth. There is no charge. All you have to do is supply copy to the editor.

CHAPTER #107 MEETINGS

Days and Times

Mart	Second Sunday	11:30AM	Even numbered months
Chapter	Second Sunday	12:30PM	Even numbered months
Board	Second Sunday	after the Chapter Meeting	
Evening	First Friday	7:30PM	Odd numbered months

2003 Meeting Dates

FRIDAY

January - None
 March 7
 May 2
 July - None
 September 5
 November 7

SUNDAY & Board

February 9
 April 13
 June 8
 August 10
 October 12
 December 14

We want to keep our members coming to the chapter meetings on a regular basis. If you have problems with transportation to and from meetings, let a director or officer know so we can help you find a carpool.

Other NAWCC Chapter Meetings in Northern California		
Chapter	Meeting Address	Meetings
De Anza #94	Odd Fellows Lodge 20589 Homestead Rd Cupertino, CA	1st Sunday even months (except April)
Monterey Bay #70	Live Oak Grange Hall 1900 17th Ave Santa Cruz, CA	3rd Sunday odd months
Sacramento #71	Sacramento Garden Center 3330 McKinley Blvd. Sacramento, CA	4th Sunday odd months
San Francisco #5	401 Marina Blvd. San Leandro, CA	2nd Sunday odd months

DIRECTIONS TO CHAPTER MEETINGS

Sunday Meetings

From Oakland - Highway 24 going East

Take Pleasant Hill Road South exit.
 At light, turn right onto Pleasant Hill Rd.
 At end, turn left on Olympic Blvd. Go 0.9 miles.
 At light, turn right onto Tice Valley Blvd. Go 0.6 miles.
 Turn right into Acalanes Adult Center (1963 Tice Valley Blvd.).

From San Ramon - Highway 680 going North

Take Olympic Blvd. exit.
 Left on Olympic Blvd. Go 0.9 mile.
 At light, turn left onto Tice Valley Blvd. Go 0.6 miles.
 Turn right into Acalanes Adult Center (1963 Tice Valley Blvd.).

From Benicia - Highway 680 going South

Take Olympic Blvd. exit.
 Right on Olympic Blvd. Go 0.8 mile.
 At light, turn left onto Tice Valley Blvd. Go 0.6 miles.
 Turn right into Acalanes Adult Center (1963 Tice Valley Blvd.).

Friday Technical Meetings

Location varies. Program for March will be announced later.

Due to our tax exempt status, only NAWCC members can participate (buy or sell) in our Mart - be prepared to show a current NAWCC membership card.

