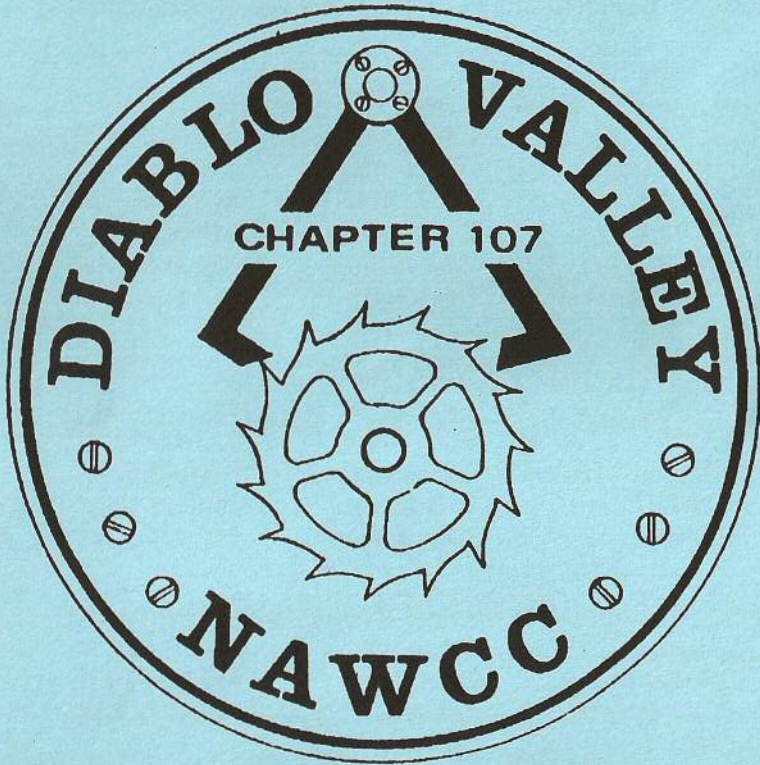


# BULLETIN



June 1996  
Volume 105

# DIABLO VALLEY CHAPTER 107

National Association of Watch and Clock Collectors

Chapter Motto "Accent on Education"

## Meetings

Chapter	Second Sunday 11:30AM	- Even numbered months
Evening	First Friday 7:00PM	- Odd numbered months
Board	Second Sunday - following the Chapter Meeting	

## 1996 OFFICERS

President	Jay Taylor	510-522-2409
Vice President	Rich Simpson	510-672-2051
Vice President	John Stohr	510-376-6476
Secretary	Roy Holman	510-530-5428
Treasurer	Walt Hubrig	510-685-0260
Past President	Roy Clark	510-376-6356

## DIRECTORS

1996	Dick Heep	510-939-4924
1996	Russ Price	510-937-9231
1996	Dale Gardner	510-531-7665
1996/7	Lois Naye	510-934-4557
1996/7	Tom Beales	510-376-6212

## COMMITTEE CHAIRS

Display	****open****	
Raffle Drawing	Jack Coulter	510-284-1031
Library	Sandy Cuthill	510-686-3144
MART	****open****	
Membership	Roy Holman	510-530-5428
Nominating	John Stohr	510-376-6476
Photo	Richard Simpson	510-339-9529
Program	Richard Simpson	510-339-9529
" "	John Stohr	510-376-6476
Refreshments	Lois Naye	510-934-4557
Tool Library	Walt Hubrig	510-685-0260
Bulletin/Editor	Steve Fabes	510-831-8799

## Meeting Information

June 9th 1996

ACALANES ADULT CENTER

(the old Del Valle High School - Room D-1)

\*\* see directions at inside of the back cover \*\*

MART Set-up	11:30AM
MART Starts	Noon
Ends	1.00PM
Program Starts	1:00PM
Board Meeting	Following the Program

Members are invited to stay and attend the Board Meeting

\*\*\*\*\* June 9th Program \*\*\*\*\*

It's that crazy Summer Time of Year again  
Yes. The Ugly Clock Contest, the Cookie Bake-Off  
and the White Elephant Auction Sale



Each one of these three events poses a challenge  
that any proud and worthwhile member of  
Chapter #107 can easily step up to.

Cooking/baking we all do well and its just a  
matter of choosing the winning recipe. Every one  
of us has more ugly clocks that we will admit to,  
the trick is in finding them. The Summer Auction  
is that chance to clear out the treasured pieces  
and boxes of horological junk that will become  
some lucky buyers treasure trove.

Its up to you - the challenge has been made!

# President's Message

*Fellow Members,*

*As you can see by the calendar, we are half way through the year and the best has yet to come. April as many of you are aware, I made a side trip to the NAWCC Museum in Columbia PA. The new clock tower is beyond my expectations and the museum is slightly rearranged from my last trip four years ago and was still a pleasure to walk through. I spent an hour with NAWCC staff discussing items from the library to help with membership. The next hour was spent on a wonderful tour of the NAWCC School of Horology. I was escorted through the class rooms and given demonstrations on the video and state of the art camera facilities for working with the students. I was able to spend time talking to some of the students and getting a feel for the school and the associated costs such as room and board. We will discuss at the June meeting and if anyone is interested please let me know as I have extra school brochures and class listings.*

*For the June meeting we are booked with exciting events. We are trying to get Fran Sweet, Bob Mac Iver's daughter to come by and discuss what it was like growing up in a house full of clocks.*

*Remember there will be no donuts for the June meeting as this is our Cookie Bake-off Contest so everyone should start planning - we hope to have at least twelve entries this year. The grand finale will be the Ugly Clock Contest along with the White Elephant Auction Sale. Remember that all the proceeds go to the Chapter #107 General Funds. Do I need to say more about the UGLY Clock Contest? Bring your treasures by, this is a chance to be recognized for your Horological Collection - remember this is open to both watches and clocks.*

*The attendance for last month's Friday night meeting was 12 members. The videos were all new releases from the NAWCC Library that I picked up while I was in Columbia PA. We had three great selections to choose from and finally decided to view the NAWCC movie on Early American Tall Case Clock Exhibit currently at Columbia PA. We concluded the evening with Restoration of a Carriage Clock. We did not have sufficient time to view Staffing the Balance Wheel. This video was actually produced by the NAWCC School of Horology. I did have time to view this video at home and would recommend it to anyone of you interested in watch or small clock repair. Also as a side note the quality and technical information provided is a great example of the ability and*

*professionalism at the NAWCC School of Horology. I will continue to try to get as new a selection of videos as is possible for each Friday evening meeting so do plan on attending. Remember, please let me or one of the Chapter directors know if there is a specific subject that would be appropriate for the Friday meetings.*

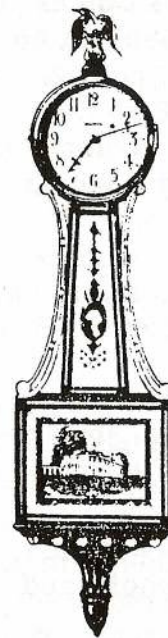
*If anyone is interested in volunteering for the MART set up for the upcoming October regional, please let me know. The majority of the effort will be required from Thursday October 10th, Noon to 9pm and Friday, October 11th from the early morning, 6:30am until 9am.*

*I look forward to seeing everyone at the June meeting.*

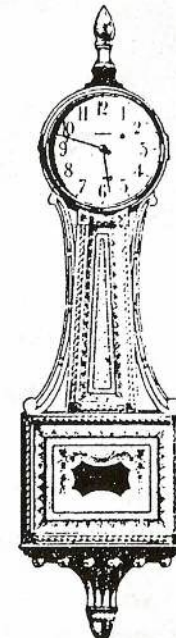
*Sincerely, Jay Taylor*

*You can reach me at the following;*

*Home 510-522-2409 Work 415-432-3802 Fax 415-432-2957  
e-mail [taylor@visa.com](mailto:taylor@visa.com)*



**WALTHAM**  
THE SCIENTIFICALLY BUILT CLOCK  
**BANJO CLOCKS**



# EXECUTIVE COMMITTEE

The Chapter #107 Board of Directors Meeting held April 14th, 1996 immediately following the Sunday Chapter Membership meeting. Recorded by Secretary Roy Holman. The meeting was opened by Board President Jay Taylor.

Present Jay Taylor, Price Russ, Roy Holman, Lois Naye, John Stohr, Tom Beales, Roy Clark, Rich Simpson, Dick Heep, Walt Hubrig, Ed Kane and John McKeen

Minutes Regional - all seems to be going well with no problems. Jay Taylor is making a list of members who are willing to help with the unloading and transportation of the MART items.

Meetings - the Friday Evening programs will continue as long as the attendance remains significant.

Program - June will be the Ugly Clock Contest, Cookie Bake-Off and the White Elephant Auction Sale.



August will be held at the home of Lois Nye in Walnut Creek - Lois urges members to bring a chair or two.

October will be deferred in favor of the Regional at the Oakland Convention Center

Members - There are 23 members who have not renewed their membership for 1996. They will be sent notices but no June Bulletin.

Bulletin - more input is requested to keep our Chapter publication meaningful and interesting.

It was suggested that Jay Taylor find other Chapters that put out a good Bulletin with the intent of sharing material.

## \*\*\* 1996 MEETING DATES \*\*\*

SUNDAY  
1996

Jun 9th  
Aug 11th  
Oct - canceled  
Dec 8th

FRIDAY EVE  
1996

-  
Sep 6th  
Nov 1st

BOARD  
1996

\* now follows  
the Sunday  
General meeting

We continue to stay at the same locations for all of our 1996 meetings. The even numbered month second Sunday meetings at Acalanes Adult Center and the odd numbered month first Friday evening meetings at the Civic Bank of Commerce just across the street next to the Safeways supermarket - so come along and join us!

## TOOL Library

The following tools are available for two week periods...  
.....at NO COST!  
call Walt Hubrig @ 510-685-0260

- \*\*\*\* TIMETRAX #160AC Timing m/c with beat amplifier
- \*\*\*\* Webster Depthing Tool
- \*\*\*\* Webster Escape Wheel Tooth Straightener
- \*\*\*\* Power Punch (for end holes in mainsprings etc.)

## Clocks at the Haas-Lilienthal House

Harold Montano has asked that we tell you about an exhibit at the fabulous Haas-Lilienthal house in San Francisco on Franklin Street. Its an exhibit of deco fashion and decor that includes several interesting period clocks and time pieces that were owned by the Haas and Lilienthal families. If you have never been to this house then even without clocks you have missed a treat. With the period clocks it should be fantastic. Dates are July 3rd thru the 28th, Wednesday thru Sunday, 10am to 4:30pm. Call 415-441-3000 for more information

## Lighting for Watch Photography

The following information was pulled from the Internet by Steve Fabes. The original author is Alan Heldman at [congreve@aol.com](mailto:congreve@aol.com)

There are really two issues when photographing watches or any small object; the lens and obviously lighting.

First as to the lens, there are four approaches;

- A. put a regular lens on a bellows or an extension tube
- B. put on an add-on magnifying lens in front of the regular lens - a so called "plus diopter"
- C. put the regular lens on the camera BACKWARDS using a so-called "reverse adapter"
- D. use a macro lens (which Nikon calls a micro lens)

The macro lens is obviously the better way to go if your budget permits. A 105mm or a 200mm macro lens will give you more working distance from the movement than a typical 50mm or a 60mm lens. I think that it's a bit easier if you cannot go for the macro lens to try option C and reverse your current lens. This is because a typical standard lens is not designed for ultra close-up work and will work a whole lot better on very small objects if turned backwards.

Now to lighting...

First, a ring-light will work OK but because it eliminates all shadow sometimes details are lost. It also assume that we are shooting the front of the watch without the crystal in place. If the crystal is in place you will probably get a donut reflection on the glass.

A very cheap, low tech and successful way to light a movement with its crystal in place is to buy some frosted Mylar or similar material and make it into a cone shape - say two inches in diameter at the small end and six inches in diameter at the other end. Put the cone with the small end up and the watch on the table with the wide end of the cone around it. Then aim a good strong light through the frosted Mylar. Point the camera through the small end of the cone. You should get a nice rounded light without harsh shadows. If the camera has a built in meter, use that for the correct exposure - you will not need any fancy compensation formulas.

Finally, stop down the lens as much as is possible for the depth of field. Although you will generally find it sharpest not quite stopped all the way down - say stop down to f22 and not f64 - check you own camera for the outside aperture limit.

## Judging Clock Dials on Face Value

from Harold Montano

Harold forwarded an article that I too had read in the "Country Living" magazine. My initial reaction to the Living article was one of disdain because it made a passing reference to putting quartz movements into antique wooden dials. I read the article again and apart from the quartz transgression it is pretty interesting. Due to space constraints I will paraphrase the article.. Ed..

When examining a clock dial make note of the spandrels - that's the decoration in the corner areas, the broken arch - the semi circle above many square dials and the style of the numerals, Roman or Arabic. Note also a name and often a town.

The term dial comes from the pre 18thC term for a sun-dial - a "dials" and the telling of time was called "dyalling"

Dials are typically square or arched. Small dials around 11 inch square were the norm up until circa 1725. After this they got larger (15") and the broken arch appeared.

The earliest grandfather clock dials date to the late 17C and were always brass. Spandrels if present were smaller and showed human figures, in later dials they were larger and the spandrels took the form of abstract filigree patterns.

A matte finish inside the chapter ring signals pre 1730 while engraved patterning carries thru the late 18C. Enameled or painted dials became fashionable after about 1775. The early technique was called japanning and required a steady hand.

In England, after 1800 dial painters began to use Arabic numbers for the hour markings. At the same time small lines replaced the dots previously used to mark the individual minutes.

Automation, rocking sailing ships arrived circa 1800. Moon phases first appeared as early as 1750 but were not popular until the early portion of the 19C.

Some horologists consider the period between 1820 and 1840 the beginning of the deterioration of the art of dial painting.

## Editor's Note

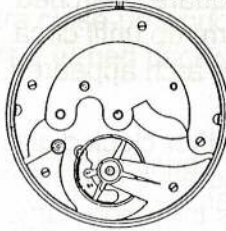
by Steve Fabes

The challenge as always is not only getting articles but also finding the time to get the Bulletin prepared. I am traveling too much and find little time to do the work to maintain the quality that this Chapter deserves.

I will keep to the task but if there is an aspiring Editor who is shy and is holding back - **don't....!**

I will not abandon this work but would like to hear from anyone who has some time to help get the content of the future issues of this great Chapter Bulletin back up to the level it held a year or so ago.

ILLINOIS SPRINGFIELD WATCH CO.



Model 2, 8 size, hunting, lever set.



Model 1, 6 size, hunting, lever set.

(ph)510-831-8799 (fax)415-278-7474 (e-mail) sfabes@netcom.com

### From Oakland - Highway 24 going East

Take Pleasant Hill Road South exit  
At light, turn right onto Pleasant Hill Rd  
At end, turn left on Olympic  
At light, turn right onto Tice Valley  
Go up until first light  
Go another 150 yards and just before Pedestrian X-ing - turn right into Acalanes Adult Center, Del Valle Theater - room D-1  
(address 1963 Tice Valley Boulevard)

### From San Ramon - Highway 680 going North

Take South Main exit  
Left on Newell  
Left on Olympic  
Left on Tice Valley  
Go up until first light  
Go another 150 yards and just before Pedestrian X-ing - turn right into Acalanes Adult Center, Del Valle Theater - room D-1  
(address 1963 Tice Valley Boulevard)

### From Benicia - Highway 680 going South

At 680/24 take Highway 24 to Oakland/Lafayette  
Take first exit - Pleasant Hill Road South  
Go under freeway onto Pleasant Hill Rd  
At end, turn left on Olympic  
At light, turn right onto Tice Valley  
Go up until first light  
Go another 150 yards and just before Pedestrian X-ing - turn right into Acalanes Adult Center, Del Valle Theater - room D-1  
(address 1963 Tice Valley Boulevard)

**Note:** *Due to our tax exempt status only NAWCC members can participate (buy or sell) in our MART - be prepared to show your current NAWCC membership card*