

[NAWCC Community](#) | [Chapter List](#)

[Sign in](#)



National Association of

WATCH&CLOCK

Collectors, Inc.

NAWCC Chapter 52 - Los Padres

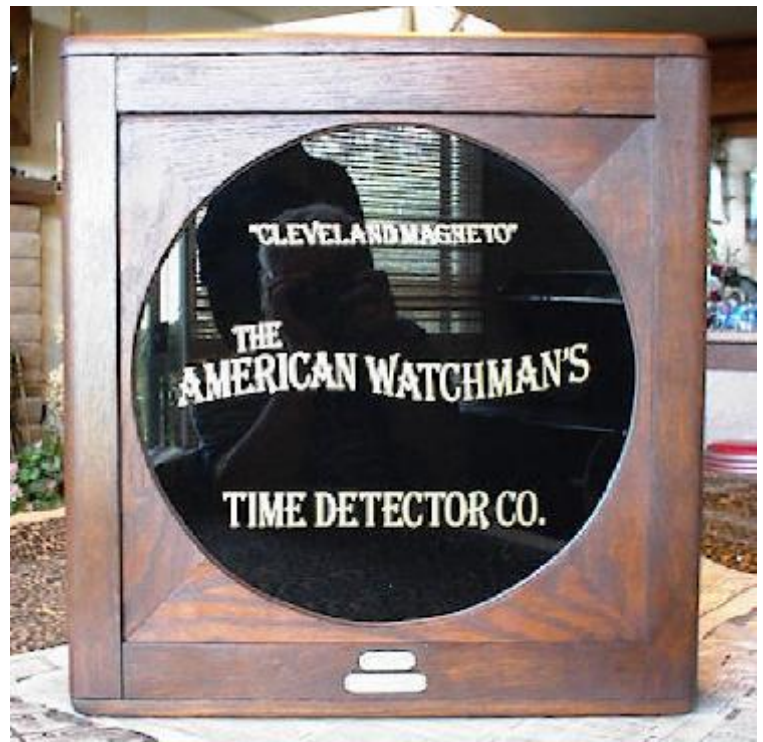
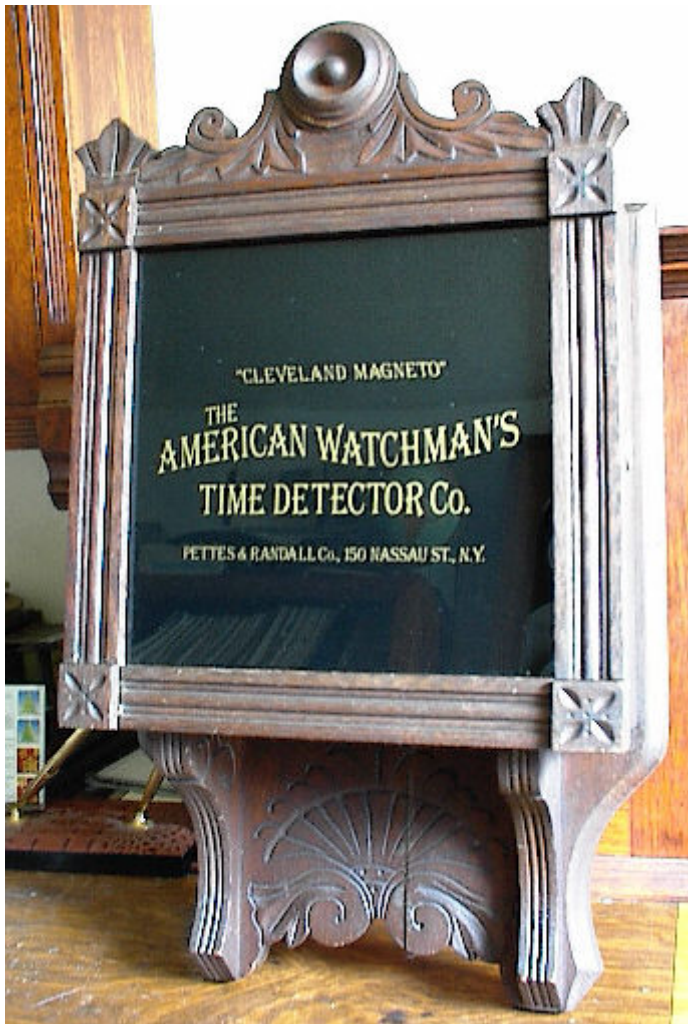
American Watchman's Time Detector

CIRCA 1905 , PREVIOUS TO 1900 THIS COMPANY WAS KNOWN AS THE CLEVELAND ELECTRIC MANUFACTURING COMPANY, AROUND 1900 IT WAS INCORPORATED AS THE AMERICAN WATCHMAN'S TIME DETECTOR COMPANY. CHECK THE DETEX LINK ON THE HOME PAGE TO SEE A DIFFERENT EXAMPLE.

[NAWCC disc link](#)

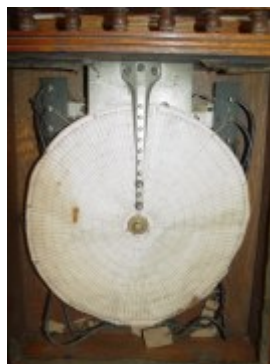
THIS UNIT COULD HAVE 3 STATIONS, BUT IS ONLY SET UP FOR ONE. Glass is 9.5 inches square

Scroll down to see some great pix, catalogs and billheads.





Later example serial # 10430 circa 1919 (35 station 22 inch square) pics above show Seth Thomas #10 chart drive, mechanism and Petis and Randall sticker. The two above are from the Bill Kapp collection.



the above clocks come from a private collection. A gorgeous 60 beat self

winding movement that appears original to the case. The screw holes in the back match perfectly to the self winding bracket. Note the door opening from right to left which is typical on these Watchman clocks. I can't see where the watchman's device was mounted, if it ever was. I would expect it to be on the left side of the case, with the paper dial centered between the Clock dial

Below are some billheads and a 1900 ish catalog.

**The Cleveland Magneto
American Watchman's
Time Detector**



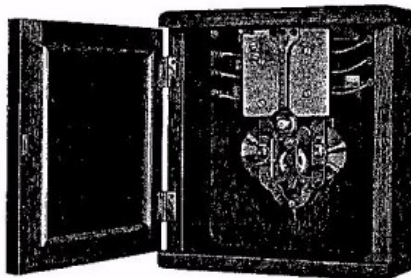
Manufactured by
**The AMERICAN WATCHMAN'S
TIME DETECTOR COMPANY**
3403 PERKINS AVENUE
CLEVELAND - OHIO

TIME DETECTOR COMPANY

Explanation

The Cleveland Magneto is the result of 32 years of experience and the use of the best materials obtainable.

That every establishment employing one or more watchmen require a Time Detector is a fact long realized—it is merely a question of selection, which is done on reliability.



Size of 6 Station Outfit—11 1-4" x 12 3-4" x 5"

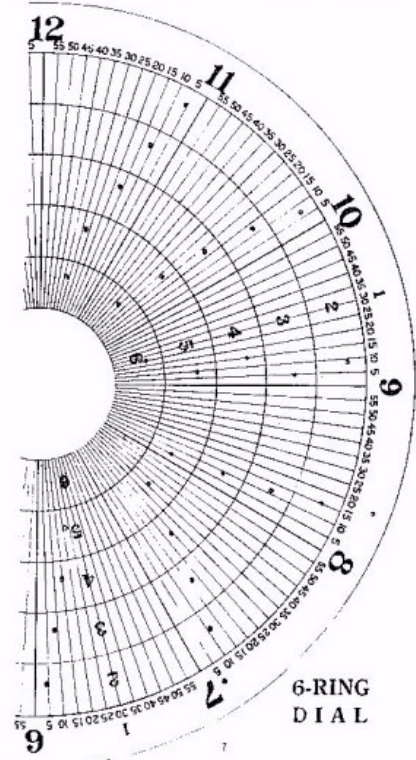
We know that a careful examination will demonstrate that this system combines all the desirable features necessary to a Watchman's Time Detector at less expense than can be obtained by any other system at whatever price.

The Cleveland Magneto American Watchman's Time Detector is approved by all insurance companies, fully patented in the United States, Canada and Europe.


A System of Merit

The most simple, durable and reasonable outfit at any price.

TIME DETECTOR COMPANY



UNPARALLELED ACCURACY
WE PREFER TO MAKE THAN ANY OTHERS. CUSTOMERS.
ESTABLISHED 1880



THE AMERICAN WATCHMAN'S
TIME DETECTOR CO.
NEW YORK CITY

ELECTRIC INTERMEDIATE CLOCKS FOR WHAT MOTORS
ELECTRIC TIME SYSTEM (MOTOR OR A SECONDARY)
SCHOOL PROGRAMME SYSTEM
INDIVIDUAL TYPE ALARM
INTERIOR TELEPHONE SYSTEM
EMPLOYEE TIME RECORDS (MOTOR OR A SECONDARY)
ELECTRICAL CONSTRUCTION A SPECIALTY

LONG DISTANCE TELEPHONE CO. OF N.Y.

AVAILABLE IN N.Y. CITY FUNDS
MAKE DRAFTS TO J.S. LINDEN, TREASURER

614 New York May 25-1898
ORDER NO. 205 Held to Richard Jones Hospital
Hospital Department City
Repairs of Time part of clock
including Time & material
Held to
J.S. Linden
J.S. Linden

ESTABLISHED 1880.

THE

Cleveland Electrical Mfg. Co.

SOLE
MANUFACTURERS
OF THE

AMERICAN
WATCHMAN'S

Time Detector.

MANUFACTORY,
SALESDROOM AND OFFICE

44 AND 46 SHERIFF STREET.

CLEVELAND, O.

BRANCHES:

234 BROADWAY, N. Y., . . . J. S. MORSE, SUPT.
149 LA SALLE ST., CHICAGO, . . W. H. WHITESIDE, SUPT.

GENERAL AGENCIES:

35 E. HADLE ST., BUFFALO, . . JAYNES ELECTRICAL CO.
22 UNION ST., NEW ORLEANS, . . C. S. BIRT CO.
CITY OF MEXICO, MEXICO, . . MEXICAN TELEPHONE CO.

M. M. HOBART, PRESIDENT
W. C. WALKER, SECRETARY.

ADDRESS AND CORRESPONDENCE TO

ARTHUR B. FOSTER, GENERAL MANAGER.

THE CLARK-BRITTON PRINTING CO., CLEVELAND, O.

RECEIVED THE ONLY AWARD GIVEN FOR A WATCHMAN'S TIME DETECTOR AT
THE GREAT COLUMBIAN EXPOSITION AT CHICAGO IN 1893.

APPROVED BY ALL THE

MUTUAL AND STANDARD INSURANCE

COMPANIES.

FULLY PATENTED IN THIS COUNTRY AND EUROPE.

THESE TIMES ARE MARKED BY THESE INSTRUMENTS IN THE AS ALL
OF THE TIME DETECTORS COMBINED.

It is the Company's Right Watchman's Time Detector is the only one of this System. Watchman's Time
Detector is the only one of this System.

THE AMERICAN WATCHMAN'S TIME DETECTOR CAN ONLY BE PURCHASED FROM
AUTHORIZED AGENTS OF THIS COMPANY, AND IT WILL BE TO YOUR
ADVANTAGE TO PLACE ORDER WITH THEM ONLY.

CAUTION.

This Company owns the Patent granted to C. F. RANKIN, October
24th, 1882, No. 263,328.

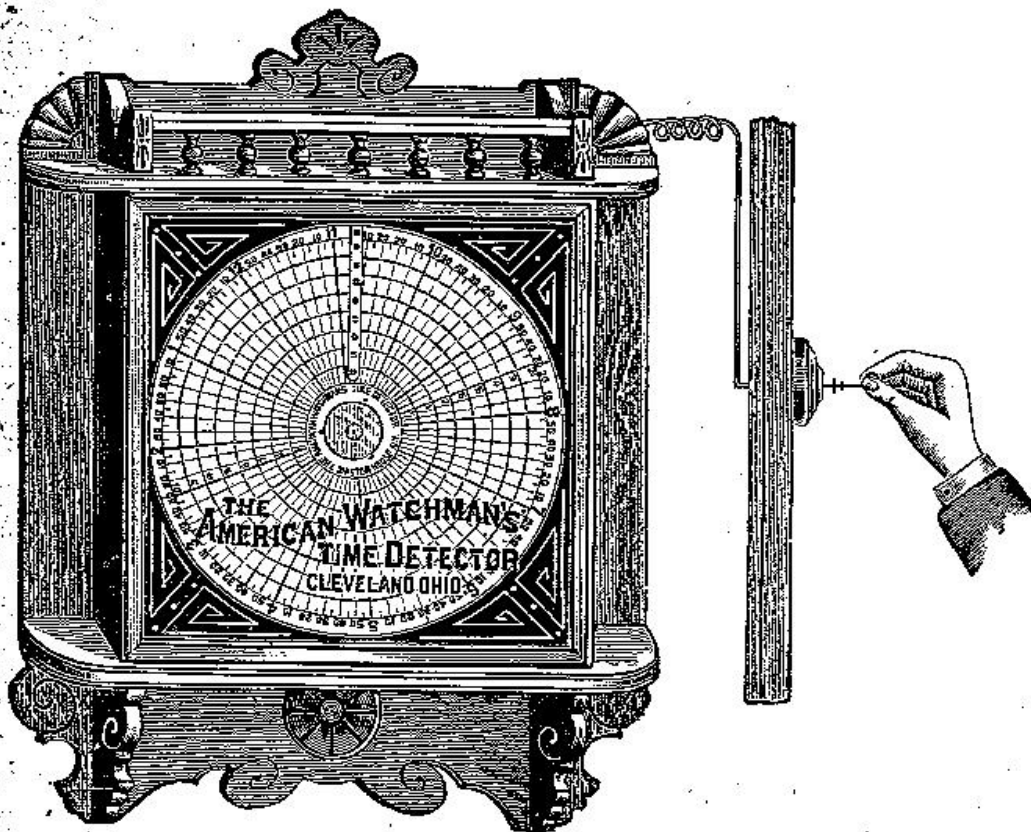
All Watchman's Time Detectors made or used without consent for each
station, including the right granted to this Company by the above patents, and reg-
isters with individual Watchman's Time Detector, No. 263,328, issued by this Company,
responsible for such unlawful use, and the consequences thereof, and liable to suit
therefor.

It is proved in the fact that suits have been brought in the courts, and
injunctive decrees rendered by the courts, and the patents. We do not, however,
need or care to call attention to this matter, but prefer to rely on the merits of
our superior system.

THE AMERICAN
WATCHMAN'S TIME DETECTOR

Shows Absolutely to the Minute where the Watchman is
and where he is not.

Explanation. The system that we describe and illustrate in these pages, is one which has been perfected by years of experience and study at great expense, and we feel that what we now offer to the public is no longer an experiment in any sense, and as we have had much more experience in Time Detectors than all others together (being the only concern in existence devoted exclusively to this business), we think a careful consideration of the following pages will repay anyone who is interested in the efficiency of night watchmen.



The above cut represents the Detector in Standard Case closed, one station in operation.
Dimensions of Case, 26 inches long by 19 inches wide.

We think that a careful examination will demonstrate that this system combines all the desirable features necessary to a Watchman's Time Detector, at less expense than can be obtained by any other system at whatever price.

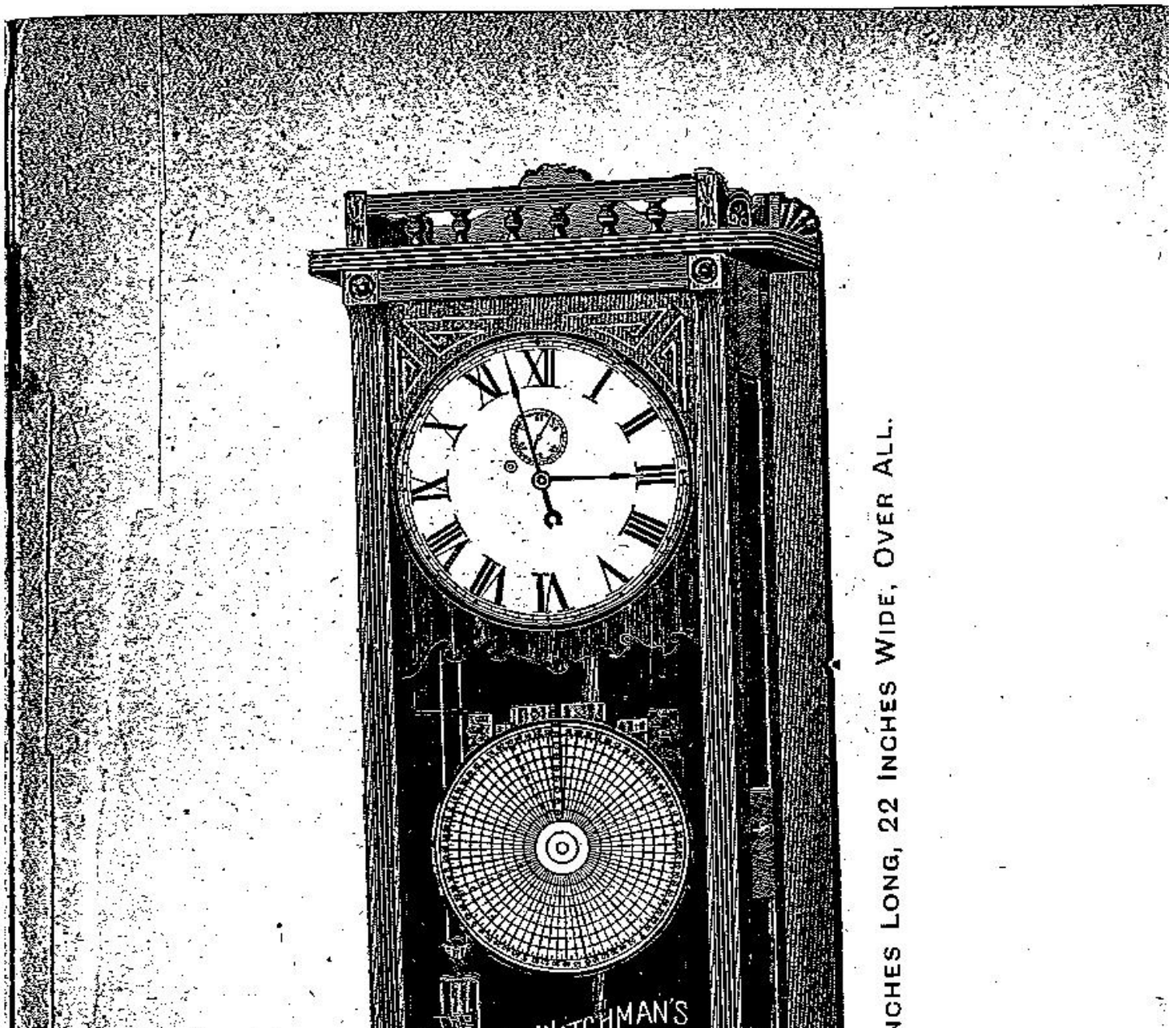
Its Object. The American Watchman's Time Detector is designed to and does keep an exact record of the doings of the night watchman in any establishment where it is in use. The instrument closed with a Yale lock, is placed in the office and connected by insulated electric wires to key stations placed in different parts of the premises where the watchmen are required to pass. As the watchman passes on his rounds he operates each station in turn, and this is instantly recorded in the Detector in the office, showing *where* each watchman is, and *when* he is at each station.

The record is made on a paper dial 12 inches in diameter (shown in cut), which revolves on time by a clock movement. The record is made by needles, each punching a hole (see dial inset) through the paper dial, one of which is operated by each key station. If the station is operated, a record is made; if it is not, no record is made.

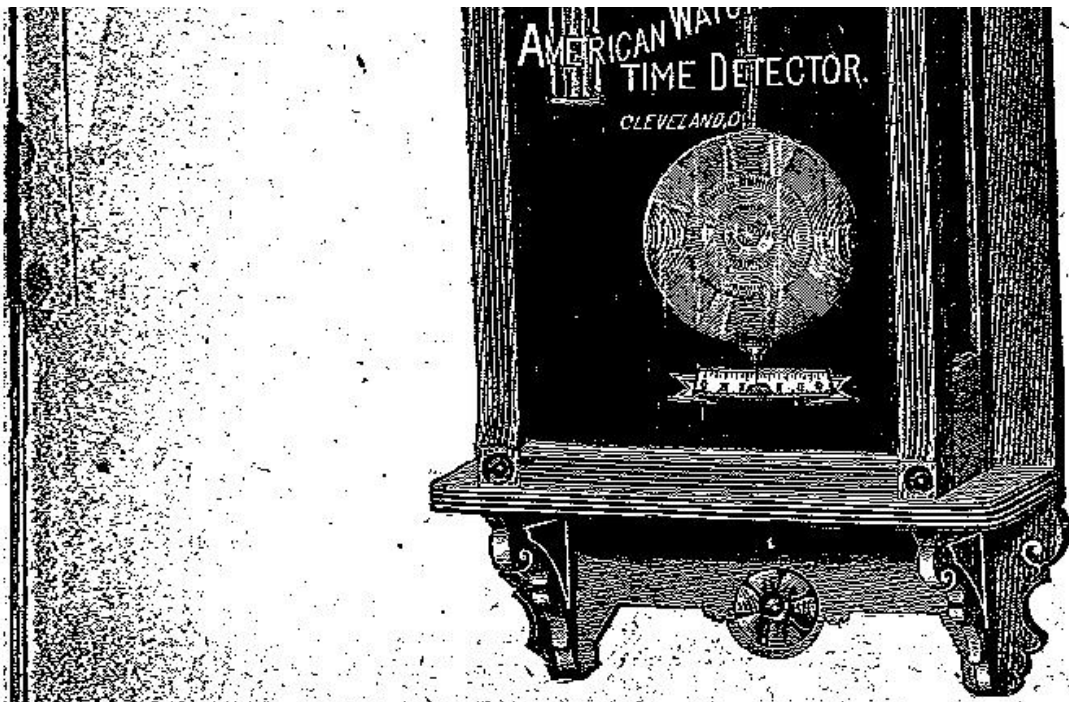
The Dial. A new dial is put on every day, so that a daily record is kept of the doings of the night watchman. ANY NUMBER OF STATIONS MAY BE CONNECTED TO A SINGLE INSTRUMENT AND FROM ANY DISTANCE, AND FOR ANY NUMBER OF WATCHMEN; ONE DIAL KEEPS THE WHOLE RECORD, WHICH CAN BE READ AT A GLANCE. The time of making the record is shown by figures (1 to 12) in the margin. As each station is independent of the others, it shows which are visited and which are not. Each ring on the dial corresponds to a station, so that a nine station system has nine circles on the dial, and a fifty station system a dial with fifty circles, etc; and if five men were to make a record on this (fifty station instrument), each one having ten stations, the record of the first watchman might be made to appear on the ten outside rings of the dial, the record of the second man on the next ten rings, and so on, so that all the men can be making their rounds at the same time; and still a record for each one will appear on the dial entirely distinct and independent of the others, as one station has no connection with the others. IT MAKES NO DIFFERENCE HOW MANY WATCHMEN ARE EMPLOYED; THERE IS A SEPARATE RECORD FOR EACH, AND ONE WATCHMAN CANNOT MAKE A RECORD FOR THE OTHERS WITHOUT IT BEING RECORDED ON THE DIAL. We have instruments keeping a record of fifteen watchmen on a single dial, and the whole is read at a glance. THERE IS NO POSSIBLE WAY OF MAKING THE RECORD EXCEPT BY OPERATING THE STATION. It is mechanically so simple that it is not liable to get out of order, and when once put in operation requires little attention. It can be put in position by any competent mechanic.

It is impossible to tamper with it in any way without certain detection. The wire is cabled both inside and outside where necessary, and covered in exposed places.

The instrument is put up on a guarantee to do all that is claimed for it.

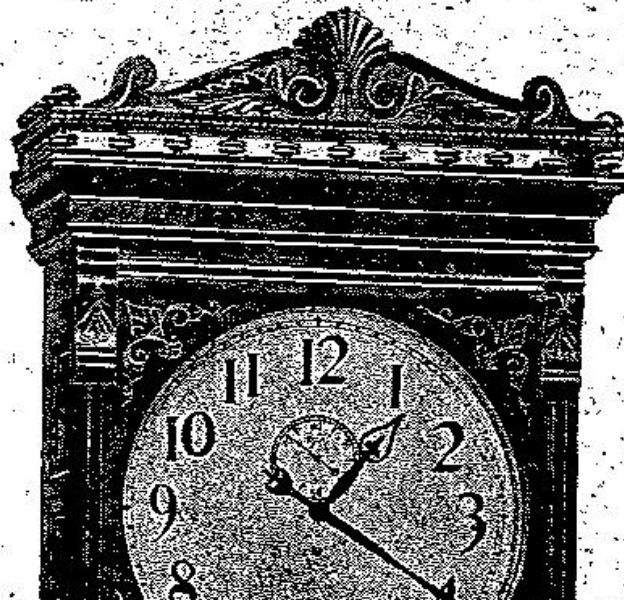


22 INCHES LONG, 22 INCHES WIDE, OVER ALL.

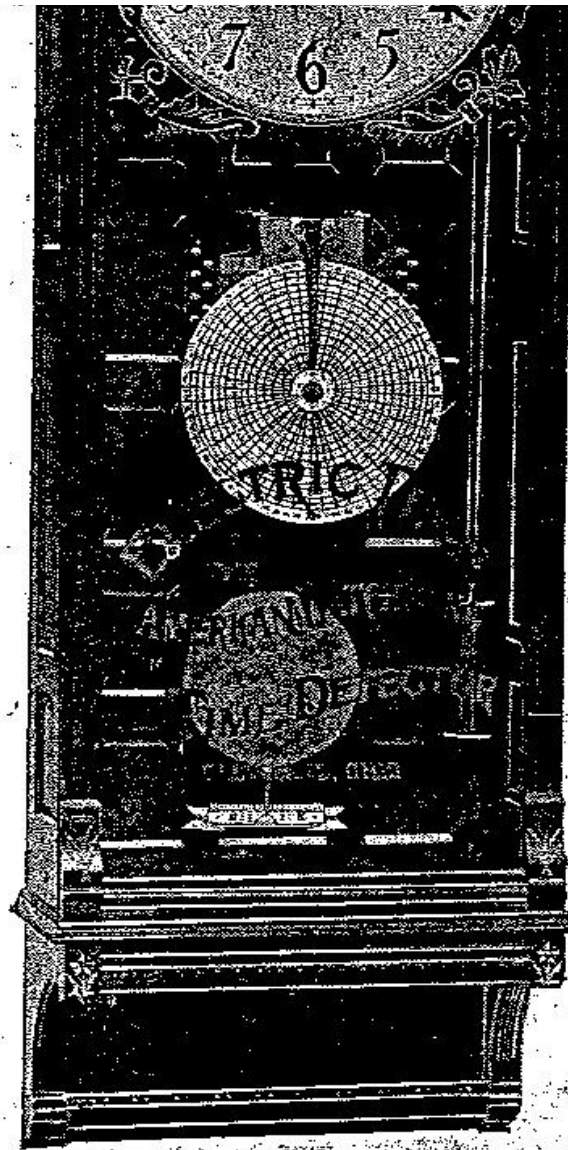


SIZE OF CASE, 66 IN

No. 18.



VIDE, OVER ALL.



SIZE OF CASE, 77 INCHES LONG, 25 INCHES W

No. 31.

THE AMERICAN WATCHMAN'S TIME DETECTOR.

11

Special Regulators. The cuts on pages 9 and 10 represent our No. 18 and No. 31 Regulators for those who desire a finished movement, and an especially elegant case. To our No. 31 movement we attach our *Electric Time System*, when desired. This consists of Secondary Dials placed in the principal departments of Factories and run *electrically* from Regulator in office, thus insuring uniform time throughout your plant without the trouble of winding or the expense of keeping Clocks in repair.

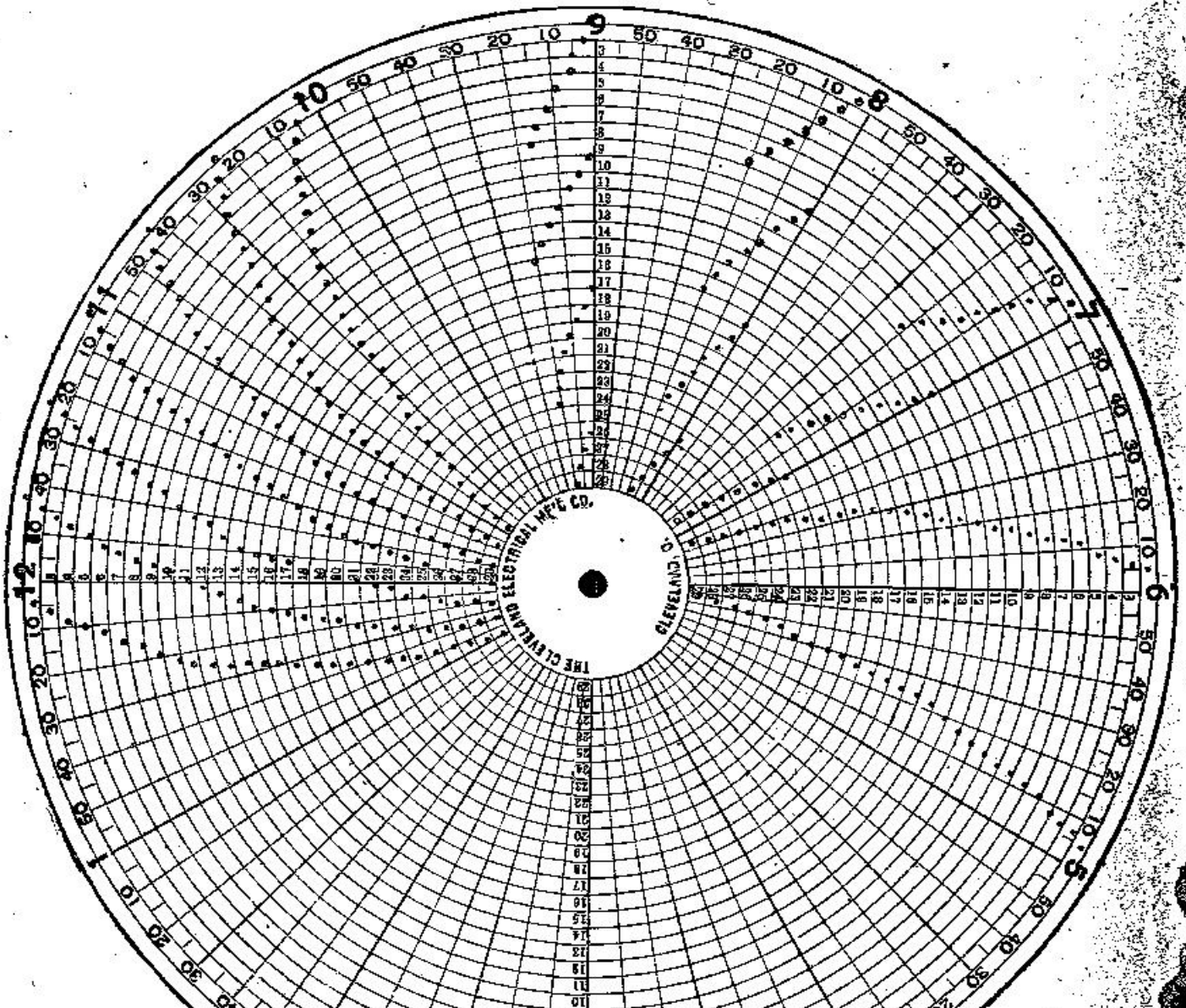
If you are at all interested in the subject of Time Detectors for Night Watchmen or Electric Time, we invite your correspondence, and shall be pleased to explain more in detail the working and expense of our System.

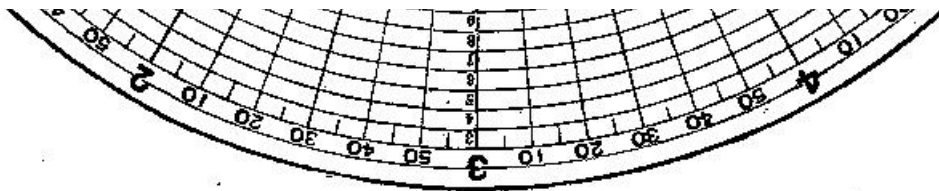
Police Service for Towns and Cities. The system is exactly adapted to the wants of towns, cities and villages, for keeping the record of the movements of the night policemen and patrolmen. That there can be no collusion or combination to make the record, one for another, without detection, has been proved in scores of cases where this system is in use.

Appreciated by Insurance Companies. Insurance Companies appreciate the value of Time Detectors and Mutual Companies insist upon their use, and Standard Companies, in fixing the rate of insurance, fix a lower rate to those using ours, and in some localities we are able to effect a discrimination in the rate of insurance, even between different kinds of Time Detectors. In very many cases the instrument will pay for itself in less than a year by difference of insurance, and certainly in the long run anything that improves the risk reduces the rate of insurance, for all these things are taken into consideration in fixing the rate. The insurance proposes to cover actual value of premises only, and not the loss occasioned by the stoppage of the business until a new mill is built, and this risk must be carried by the owner, and how can it be better insured than by having efficient service by the watchman who with our system is compelled to patrol the premises as often as his employer requires.

12

... THE AMERICAN WATCHMAN'S TIME DETECTOR. ...





The above cut represents the dial reduced one-half. See explanation on opposite page.

THE RED DOTS on the opposite dial are intended to represent the perforations through the paper as they would be made by watchmen making their regular rounds. The 5 o'clock record shows that one watchman made the entire course of 29 stations, and that it took him 50 minutes to make the trip, the 6 o'clock shows the same thing. 7 o'clock shows the record of the three watchmen going at the same time over different buildings. Supposing the record to be completed by each man in 20 minutes; one watchman has 11 stations which he visits in regular order; the second watchman has 10 stations which he visits in regular order; the third watchman going over a still different course has 8 stations. The 8 o'clock record shows the movements of four watchmen going at the same time; the first watchman having 8 stations; the second one 8 stations; the third 8 stations, and the fourth watchman 5 stations, so that we have a separate record of the movements of all the men going

at the same time over different courses. The 9 o'clock record shows the same thing. From 10 o'clock on the records show how we can trace the movements of the various men, each man going over the entire premises, one following the other. After the first man has been gone 20 minutes, the second man starts in at station 1; when he has been gone 20 minutes, the third man starts in at station 1; at this time the first watchman is at station 25; the second watchman is at station 12, and the third watchman at station 1. No. 1 completes his record at 10 minutes before the hour, and at 11 o'clock starts in again for his second route, so that by this means each watchman traverses the entire course every hour, and each point in the premises is passed every twenty minutes, supposing this to be the number of stations, and also that it requires 50 minutes to make the rounds or thereabout. This of course would vary according to the size of the place and the length of time to cover the premises, showing that there is no possibility of any of the records of one man being the work of another, without its being shown upon the dial.

There is a wide difference in watch-clocks.

Have you the best system for night watchmen?

Is it suited to every place where night men are employed?

By *this* system the record of any number of men is kept on *one* dial.

It is not a complicated system, which requires an electrician to keep it in order.

It is very economical in price, often costing no more than the mechanical instruments.

It shows not only the time that the watchman is at each station, but his course between stations as well, as accurately as though he was being followed.

It seems fair to assume that any system which has proved unreliable and defective in hundreds of cases must give way to some more approved system.

In nine out of ten instances where our system is adopted we displace some sort of watch-clock, and usually it is because there has been an experience of the watchman's tampering with—"beating"—the clock.

We take watch-clocks in trade every day and have a good many of every known kind of mechanical watch-clocks, all for sale cheap.

We invite the most careful examination of our system and our record as well, and will be glad to answer any inquiries whether you wish to buy or not.

We have a number of imitators but no equals.

WRITE FOR AN ESTIMATE.

Copyright © 2015 Chapter 52 - Los Padres. All rights reserved.

Powered by Higher Logic