



HEART OF AMERICA

CHAPTER 36 NEWSLETTER

CHAPTER 36

NAWCC RIVER CITIES REGIONAL SPECIAL ISSUE

MARCH, 2006

Meeting Date & Time: Date change for April meeting!!!
Sunday, April 17 - Mart begins at 1:00
Meeting and Program at 2:00

Location: Lenexa Community Center
13420 Oak
Lenexa, Kansas

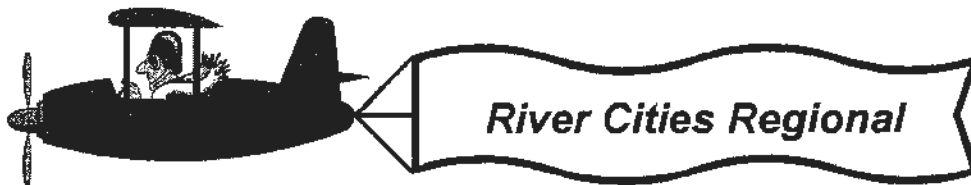
Directions: Exit I-35 at 95th Street, west to Pflumm (3rd light),
right on Pflumm (1 1/2 blocks) to Community
Center (west building)

Reminder: River Cities Regional April 1-2
KC Expo Center, 1730 N. Ambassador Drive

Program: Double Dial Clocks by Wayne Herrmann

IN THIS ISSUE

April Meeting	1
Invitation to Attend	
River Cities Regional	1
Regional Leaders	2
Meeting Calendar	2
Regional Presentations And Workshops	2
River Cities Regional	3
Atkins Exhibit	
Silent Auctions	
Breakfast Banquet	
New Membership?	3
Restoration Clock Prize	4
Enclosures:	
River Cities Regional Registration Form	



Dear friends:

I would like to invite you to Kansas City's "River Cities Regional" to be held **April 1-2** at the K.C. Expo Center near the airport. There should be something for everyone in the mart room and in the programs presented. Dealers will be there so that you can stock up on items for your clock/watch shop or your personal collection. The best in town hospitality room will serve the best in town cookies, cakes, etc. You will have opportunities to win fantastic door prizes.

Our guest lecturer, Phil Gregory, teaches reverse glass painting, stenciling, woodwork repair, dial painting and gold leafing to NAWCC chapters throughout the Midwest. Phil has a wealth of knowledge and interests to share. NAWCC guest is Tom McIntyre, 2nd Vice Chairman of NAWCC, who will speak at the Breakfast Banquet on Saturday morning. There will be hands-on movement assembly/disassembly, demonstrations, silent auctions, lectures, a special horological exhibit, spacious mart and well-planned security.

Rooms are blocked out at the nearby Radisson (816-464-2423). Single or double rooms are \$69, but your reservation must be made by March 17 to receive this excellent rate. Register now and be sure to include reservations for the Breakfast Banquet before it is sold out, where you will be eligible to win a Seth Thomas half column clock, beautifully restored by Chapter 36 members.

While you are in Kansas City, plan to stop in Village West and visit Cabella's and Great Wolf Lodge, and Nebraska Furniture.

Barbara Hohendorf
Chairman, River Cities Regional

Newsletter of the N.A.W.C.C.

Heart of America

Chapter 36

Published bi-monthly

on meeting months

Meetings schedule:

April 17, 2005

June 12, 2005

August 14, 2005

October 9, 2005

December 11, 2005

Email: dkstofer@kc.rt.com

CHAPTER 36 RIVER CITIES REGIONAL

President—Jerry Thomsberry
816-941-9492

General Chairman & Publicity
Barbara Hohendorf
913-299-3670

Registration—Bill Donegan
913-345-9121

Finance—Jerry VanLanker
816-836-4485

Mart—Bill Dugan
913-782-1057

Exhibit—Darrell Carr
913-888-7569

Programs—Jerry Thomsberry
816-941-9492

Hospitality—
Wanda Hill & Irene Bellis
816-481-0336

Door Prizes & Silent Auction—
Wayne & Ruth Herrmann
913-432-6374

Breakfast—Jacki Hamilton
816-254-8278

Security—Dan Ward
913-268-3494

NATIONAL LEADERS

Hugh Overton
NAWCC Secretary

William Donegan
NAWCC Fellow
Awards Committee

William Dugan
NAWCC Fellow
Research Committee

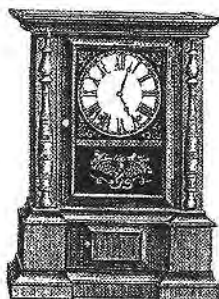
Ruth Herrmann
NAWCC Fellow

Wayne Herrmann
NAWCC Fellow

An impressive lineup of presenters will be featured at the River Cities Regional. Scheduled presentations and workshops will include:

Clocks Manufactured by Irenus Atkins and Associates - Phil

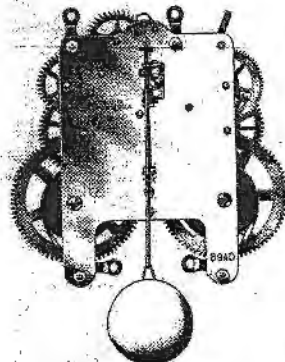
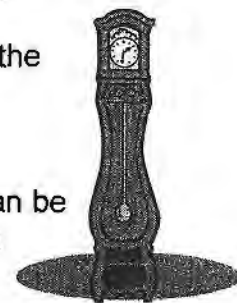
Gregory will chronicle the contributions of Irenus Atkins and his family to the clock manufacturing industry. Phil will identify the unique characteristics of the various clocks made by Atkins and his family and a number of associates.



Atkins Clock Display - After Phil's presentation on Atkins Clocks, you are invited to hear an evaluation of the Atkins clocks in the River Cities Regional display as you take a "walking tour" with Phil. Clocks from Phil

Gregory's personal collection will supplement the display.

Should a Hahl Clock Be Placed in the Hall? - Using the actual clock from the Administration Building at Ottawa University, Wayne Herrmann and Joe Gensheimer will explain the mechanical operation of Hahl clocks, the manufacturing history, and locations where examples can be found. You will not want to miss the opportunity to learn more about this unique and rare clock.



Assembly and Disassembly of Simple Clock

Movement - Designed to assess the non-repairman's interest in clock repair, this introductory workshop led by Larry Boucher, clock repair professional, will be held on the Mart floor. Participants will be given some basic information about the process before disassembling a simple clock movement. With assistance from members of your host chapters, participants will reassemble the movement.

They Tell Some Whoppers About Watches? - Richard Trambala, third generation watchmaker in the Trambala family, will share some unusual information about the history of the watch manufacturing industry. He will also include some more modern concepts about the industry. Richard's family of watchmakers includes his father and grandfather, himself, and his daughter.

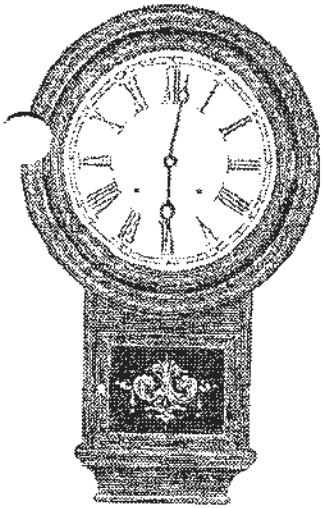
Grandpa's Old Watch - Who Made it, When and

Where? - Have you held on to a sentimental timepiece without knowing about its collectability or manufacturing history? If you have questions

about a family watch or one you have purchased in the past, you are invited to bring it to Mile Sandler's table on the Mart Floor and receive answers. Times set aside for this activity will be posted and announced each day of the Mart.



**FOCUS ON
ATKINS CLOCKS
FOR RIVER CITIES
REGIONAL EXHIBIT**



The clock exhibit for our upcoming Regional will feature Atkins clocks and small statuary novelty clocks. If you haven't called Darrell Carr (913-888-7569) yet with information on the clocks you will be bringing, please do so now.

It will be the responsibility of the clock owner to deliver the clock the first day and pick up the clock at the end of the show. Our club membership will provide security during the open mart time in hourly intervals. Chapter 36 has had outstanding clock displays at past Regionals, so let's all pitch in for the April Regional.

Phil Gregory will be giving a talk in the exhibit area on the Atkins clocks displayed.

Moses (816-361-8852) has volunteered to assist me and is also available for any questions that you may have.

Darrell Carr

**RIVER CITIES REGIONAL
TABLE HOLDERS \$1 PER ITEM
FOR SILENT AUCTIONS**

Table holders—take note that silent auctions will run Friday afternoon and a good part of the day on Saturday. This is a great place to market those items for which you don't have or don't want to make table room!



We've Got Hospitality!

Wanda Hill and Irene Bellis will be offering an array of cookies and sweets and coffee in the Hospitality Room on the Mart floor. Cookies can be taken to the Hill's house, delivered to the Regional, or call Wanda or Irene to arrange for pickup. (Chapter 36 members and spouses - we're counting on your cookies!)



**Don't Forget Your
Breakfast Banquet
Ticket!**



**RIVER CITIES REGIONAL AT
KC EXPO CENTER -** The same place it was held in 2003, at 1730 No. Ambassador

Drive. Hope everyone is planning to attend the breakfast on Saturday, April 2, 2005, at 8 am. Cost is \$10.00 for a buffet breakfast, which will include seasonal fresh fruit, just-baked biscuits and sausage gravy, cheesy scrambled eggs, hash brown potatoes, bacon, bagels and cream cheese, coffee, hot teas and juices. Make your reservation now before the breakfast is sold out!!

Tom McIntyre, NAWCC 2nd Vice Chair, will be our guest, awards will be presented and a drawing will be held to determine the winner of the "Restoration Clock" and other prizes. BUT you must purchase a breakfast ticket and be present to win. The lucky winner will be proud to display this clock in his or her collection.

Jaeki Hamilton

Banquet Chairman

Chapter 36 Membership Application

Please complete this form and a \$10.00 check made payable to NAWCC Chapter 36 and mail to: Jerry VanLanker, Treasurer, 1715 S. Vermont, Independence, MO 64052. Or better yet, come to the next meeting and join in person.

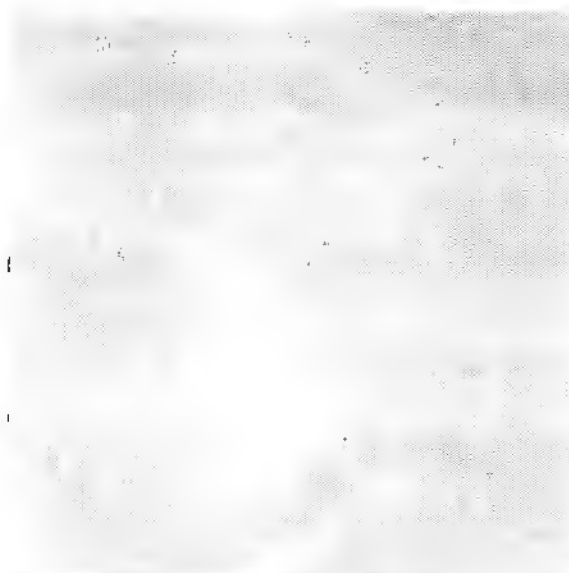
Name _____ NAWCC # _____
Street Address _____ City/State/Zip _____
Phone _____ Email address _____



N.A.W.C.C.
 Heart of America Chapter 36
 Jerry Thornsberry, President
 905 W. 120th St.
 Kansas City, MO 64145



March, 2005



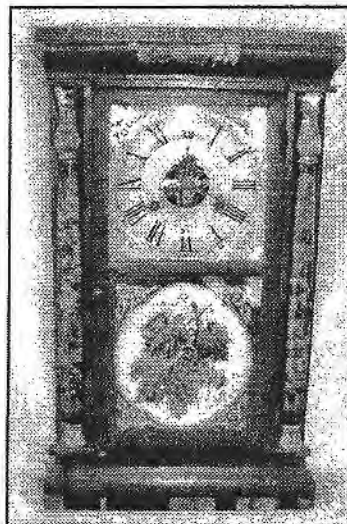
6806245340



Chapter 36 Members

Please note the April chapter meeting has been changed to April 17th to give members some breathing room from the River Cities Regional! Come prepared to pay your annual dues at the April meeting or mail them to Treasurer, Jerry VanCanker!

Win This Clock at the Breakfast Banquet!



This is the "BEFORE" picture of the Seth Thomas half column clock that has been restored using the combined expertise of the Chapter 36 Restoration Committee members.

This clock and several other very nice horological items will be door prizes at the Breakfast Buffet Banquet on Saturday morning. You must be present to win! Be sure to include payment for the Breakfast when mailing your registration form. The event may be sold out if you wait until the Regional date to purchase a ticket!

RIVER CITIES REGIONAL KC EXPO CENTER

1730 N Ambassador Drive, Kansas City, Missouri
April 1-2, 2005

Host: Heart of America, Chapter 36 **Hotel:** Radisson Hotel KCI - \$69
Co-Hosts: Great Plains, Chapter 58 11828 NW Plaza Circle, Kansas City MO
Mid-Missouri, Chapter 51 Ph: 816-464-2423

Chairman: Barbara Hohendorf (single or double - this rate honored only
913-299-3670 through March 17 - call now!)
bhohendorf@kc.rr.com

Mail registration to: Bill Donegan **Pre-registration deadline March 25, 2005**
12721 Mohawk Circle **No refunds after March 25, 2005**
Leawood, KS 66209 **Confirmations by email or mail**
bjdon@kc.rr.com

DEMONSTRATIONS - SPACIOUS MART - SECURITY - HOSPITALITY - DOOR PRIZES
HOROLOGICAL EXHIBIT - SILENT AUCTIONS (\$1) - LECTURER (National Representative)

17,500+ Sq Ft Mart Area

Friday, April 1, 2005
8:00 a.m. Registration opens
8:00 a.m. Table holder set-up
9:00 a.m. Mart opens
1:00 - 4:00 p.m. Programs
6:00 p.m. Mart closes

Unlimited Tables

Saturday, April 2, 2005
8:00 a.m. Breakfast
9:00 a.m. Registration opens
9:00 a.m. Mart opens
10:00-2:00 p.m. Programs
3:00 p.m. Mart closes

All NAWCC Rules Apply

NAME: _____ **NAWCC #** _____
Check if you are: Fellow Star Old Timer National Officer _____
SPOUSE _____ **NAWCC #** _____
ADDRESS: _____ **City** _____ **State** _____ **Zip** _____
PHONE: _____ **Additional badge names:** _____
Email address: _____ (Limit 2 Mart badges per table)

Pre-registration @\$15 ea. (\$17 at door) \$ _____
Spouse, Children @\$10 ea. (children under 18 free) \$ _____
Tables (8') @\$35 ea. (5th table free) Half Table \$20 \$ _____
Breakfast @\$10 ea. (door prizes) \$ _____

Check payable to River Cities Regional enclosed for total of \$ _____

NAWCC, its officers, members and this Regional are not responsible for any
loss, injury, or tort during this meeting.

Send door prizes to: Wayne & Ruth Herrmann
5839 Perry Lane, Merriam, KS 66203