



HEART OF AMERICA

CHAPTER 36 NEWSLETTER

CHAPTER 36

NATIONAL ASSOCIATION OF WATCH AND CLOCK COLLECTORS

AUGUST, 2004

Meeting Date & Time: Sunday, August 8 - Mart begins at 1:00
Meeting and Program at 2:00

Location: Lenexa Community Center
13420 Oak
Lenexa, Kansas

Directions: Exit I-35 at 95th Street, west to Pflumm (3rd light),
right on Pflumm (1 1/2 blocks) to Community
Center (west building)

Reminder: Unpaid dues notices mailed out in July. Members
with dues unpaid after this meeting will be dropped
from the roster. Please mail your dues to Jerry
VanLanker, Treasurer, or pay at the meeting.

Program: Fort Leavenworth Kansas Clock Tower, Dan Ward

Committee Notice: Program Committee members - plan to meet
immediately following the August 8th meeting

IN THIS ISSUE

<i>August Meeting</i>	1
<i>August Program</i>	1
<i>September Picnic</i>	1
<i>Chapter Officers</i>	2
<i>Meeting Calendar</i>	2
<i>Meeting Minutes</i>	2
<i>Carthage Invitation</i>	2
<i>The Mart</i>	2
<i>In Memoriam</i>	2
<i>National Convention</i>	3
<i>New Membership?</i>	3
<i>Upcoming Events</i>	4

Chapter 36 Picnic Scheduled for September 12

Sunday, September 12, 2004
Beginning at 3:00 – meal at 4:00
Chatlain Park, 63rd Terrace & Carter,
Merriam, KS

Directions: This small park is located in the triangle just west of I-35 and just South of Shawnee Mission Parkway. Those coming from the west on Shawnee Mission Parkway will make a right turn just past Robinson Street at the Merriam Drive/Carter Avenue Exit. Those from the east will exit from I-35 onto Shawnee Mission Parkway going west. Turn right onto Merriam Drive and right again on Carter and Chatlain Park exit.

The gazebo shelter house has picnic tables, drinking fountain, electrical outlets, portable toilets and playground. Soft drinks and table service will be provided. Bring a covered dish. (Leona Miller will be furnishing brisket!)

A few not-so-serious mart items usually show up at the picnic, along with parts and pieces, and miscellaneous items.



Heart of America

Chapter 36

Published bi-monthly
on meeting months

Meetings schedule:

- August 8, 2004
- October 10, 2004
- December 12, 2004
- February 13, 2005
- April 10, 2005

Email: dkstofer@kc.rr.com

CHAPTER 36 OFFICERS

President

Jerry Thornsberry
905 W. 120th Street
Kansas City, MO 64145
816-941-9492

Vice President - Kansas

Dan Ward
11706 W. 61st Terrace
Shawnee Mission, KS 66203
913-268-3494

Vice President - Missouri

Jim Schaefer
604 NW 53 Street
Kansas City, MO 64118
816-454-4106

Treasurer

Jerry VanLanker
1715 S. Vermont
Independence, MO 64052
816-836-4465

Secretary & Newsletter Editor

Donna Stofer
9627 Grandview
Overland Park, KS 66212
913-648-3034

Immediate Past President

Jacki Hamilton
13704 E. 41 Terrace
Independence, MO 64055
816-254-8278

NATIONAL LEADERS

Hugh Overton
NAWCC Secretary

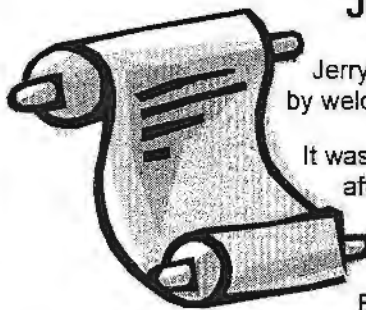
William Donegan
NAWCC Fellow
Awards Committee

William Dugan
NAWCC Fellow
Research Committee

Ruth Herrmann
NAWCC Fellow

Wayne Herrmann
NAWCC Fellow

June 13, 2004 HOA Meeting Minutes



Jerry Thornsberry opened the meeting of fifty plus attendees by welcoming several new members and guests.

It was announced that Don Higley died Saturday, June 12th, after a very short illness.

For their service and hard work during the past term, Certificates of Appreciation were awarded to Irene Bellis, Joe Gensheimer, Jacki Hamilton, Bob and Wanda Hill, and Clement Wagner. The certificates were presented by Jerry Thornsberry to those present.

The program of Hanging Kitchen Clocks produced a large group of clocks for display. Presenters Don Allen, Harold Engelhaupt, Bill Knouse and Jerry Thornsberry gave brief talks with information on clocks displayed from their collections.

The new format for the Chapter 36 Newsletter was given a round of applause with many favorable comments.

Minutes of the April meeting were corrected to read: Al Scott was a candidate for the Kansas Vice President, not the Missouri Vice President. Jerry VanLanker, Treasurer, reported a chapter account balance of \$855.42, and a regional account balance of \$7,365.87.

Minutes submitted by Bill Dugan

Mart Man says -

"Bring a clock, parts, books, any item horological to the Mart. Clean out your closets and make room for that next clock purchase!"



IN MEMORIAM

Donald G. Higley
Jan. 13, 1935 - June 12, 2004

The family requests contributions in Don's memory be made to the NAWCC Museum. Don was an active chapter member and friend. He will be missed.

*We're invited . . . to join Ozark Chapter 57
for a summer picnic on Sunday, August 1, 2004*

At the home of Hugh and Ruth Overton
1335 S. Main St., Carthage, Missouri, 417-358-5861

Mart will start at 9:00 a.m. under the shade trees.

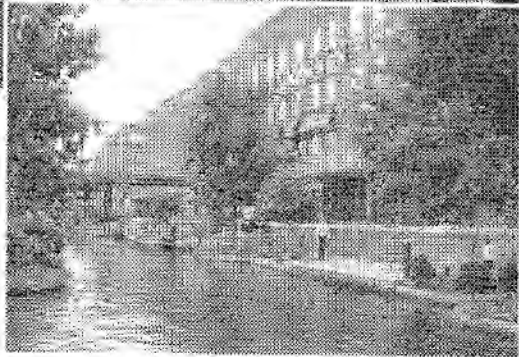
Bring clocks, watches, etc. for sale.

Bring a card table for your mart items and lawn chairs. Bring a covered dish of your favorite picnic food.

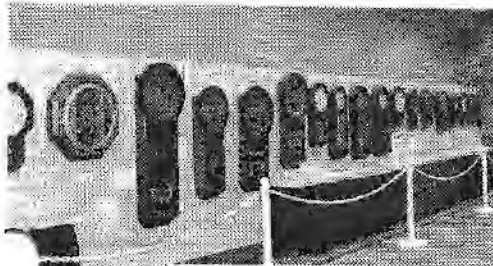
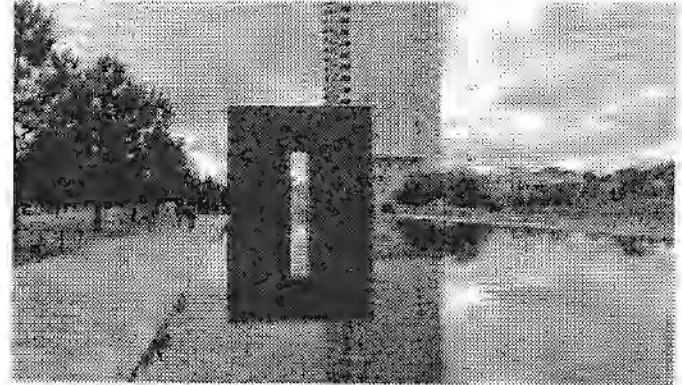
(Table service & cold drinks will be provided.)

Editor's note: Anyone who has never toured Hugh & Ruth's lovely home should not miss this event. You'll enjoy a tour of their home and carriage house, a great mart, great food and fellowship on the expansive lawn of the Overton's home. While you're there, take a driving tour of the stately Victorian homes of Carthage. (Ruth will have brochures!)

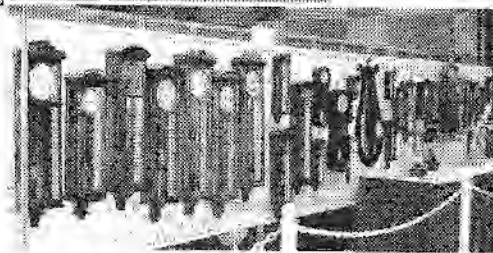
OKLAHOMA CITY NAWCC 59TH NATIONAL CONVENTION



**JUNE 30 -
JULY 3,
2004**

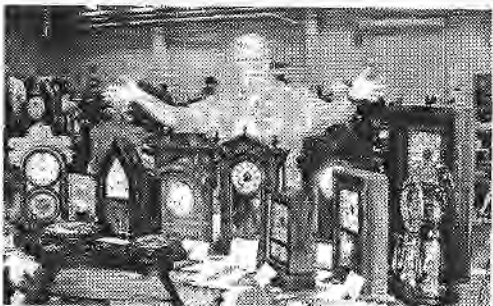


Chapter 36 was well represented at the 59th NAWCC National Convention in Oklahoma City with 24+ members in attendance holding 11+ tables. The host and 4 co-host chapters brought together a well-planned and well-executed national convention. There were over 800 tables sold, an excellent exhibit, a good variety of programs and lectures, and the Thursday night barbeque and Saturday night banquet were well attended.



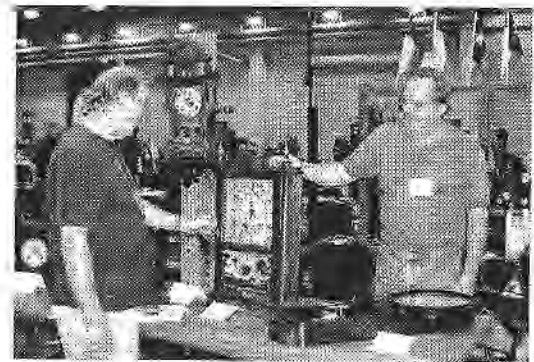
Sightseeing in downtown Oklahoma City included the Bricktown Ballpark, purportedly the best AAA minor league ballpark in the country; Bricktown Canal and the under-renovation old Bricktown area; Myriad Botanical Gardens; the Cowboy and Western Museum; and of course, the Murrah Building Memorial.

The extensive exhibit included an impressive display of Atkins clocks (many rare examples), Austrian clocks, novelty clocks, self-winding and electric clocks; all well displayed in a large exhibit area.



Al Moses' table had a definite western flavor!

Jerry Thornsberry's pillar & scroll made its final road trip.



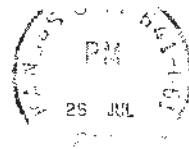
Chapter 36 Membership Application

Please complete this form and a \$10.00 check made payable to NAWCC Chapter 36 and mail to: Jerry VanLanker, Treasurer, 1715 S. Vermont, Independence, MO 64052. Or better yet, come to the next meeting and join in person.

Name _____ NAWCC # _____
 Street Address _____ City/State/Zip _____
 Phone _____ Email address _____



N.A.W.C.C.
Heart of America Chapter 36
Donna Stofer
9627 Grandview
Overland Park, KS 66212



August, 2004

6606243640 06



NAWCC Upcoming Events

Local

Aug. 1 Carthage, MO Chapter 57 Picnic
Sept. 12 Chapter 36 Picnic - Chatlain Park

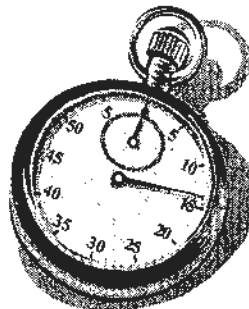
Regional

Aug. 6-7 Rocky Mountain, Denver, CO
Aug. 20-21 Eastern States, Liverpool, NY
Aug. 27-29 All Texas Chapters, Houston, TX
Sept. 3-5 Mid South, Chattanooga, TN
Sept. 10-11 Great Lakes, Dearborn, MI
 Oct 1-2 Mid-Eastern Greensboro, NC
 Oct 8-9 Mid-America Auburn, IN
 Oct 15-16 River Cities Omaha, NE
 Oct 21-23 MKOA Carthage, MO
 Nov 5-6 Arkansas Razorback, Hot Springs, AR

For more info or to download forms: www.nawcc.org

OCTOBER ROSTER TO INCLUDE EMAIL ADDRESSES!

An updated roster that includes email addresses will be included in the October Chapter 36 newsletter. When signing in at the August meeting, please include your email address if you want it added to the roster for distribution within our chapter only. Or call Donna Stofer 913-648-3034 with your email address if you will not be at the meeting.



Please pass this newsletter on to any friend or acquaintance who has horological interests or potential, and encourage him/her to attend the next meeting. Or call your chapter secretary to request a newsletter be mailed to a prospective member.